

Summary of Community Meetings on the  
Draft Nunavut Land Use Plan

KIMMIRUT

January 10-11, 2013



Nunavut Planning  
Commission



Revised - September 2013



# Contents

Introduction.....	3	Appendix 1: Open House .....	17
1.1 Context .....	3	Appendix 2: Elected Officials Meeting .....	18
1.2 Purpose.....	3	Appendix 3: Questions and Answers .....	19
1.3 Methodology.....	3	Appendix 4: Community Workshop Scanned Maps .....	20
1.4 Public Awareness .....	3	Appendix 5: Wrap Up Session .....	31
1.5 Community Population and Participation.....	3	Appendix 6: Follow-up Meeting .....	33
 Protecting and Sustaining the Environment .....	4		
2.1 Areas presented to participants.....	4		
2.2 Areas identified by participants .....	4		
2.3 Areas of importance to Protecting and Sustaining the Environment..	4		
 Encouraging Conservation Planning.....	6		
3.1 Areas presented to participants .....	6		
3.2 Areas identified by participants .....	6		
3.3 Areas of importance to Encouraging Conservation Planning .....	6		
 Building Healthier Communities .....	8		
4.1 Areas presented to participants.....	8		
4.2 Areas identified by participants .....	8		
4.3 Areas of importance to Building Healthier Communities .....	8		
 Encouraging Sustainable Economic Development.....	10		
5.1 Areas presented to participants.....	10		
5.2 Areas identified by participants .....	10		
5.3 Areas of importance to Encouraging Sustainable Economic Development .....	10		
 Mixed Use .....	12		
6.1 Areas identified in the Draft Plan .....	12		
6.2 Areas identified by participants .....	12		
 Overlapping Goals .....	15		
7.1 Areas identified for multiple goals .....	15		

# Chapter 1: Introduction

## 1.1 Context

The Nunavut Planning Commission (NPC) is preparing a land use plan to guide and direct resource use and development in the Nunavut Settlement Area (NSA). As part of its efforts, the NPC is facilitating discussions in each Nunavut community on land use and resource management issues. Information that is obtained from these discussions will be used to inform decisions regarding the further development of the Nunavut Land Use Plan (NLUP).

## 1.2 Purpose

This report presents information obtained during the NPC's visit to the community of Kimmirut. The purpose of the report is to inform decisions regarding the further development of the NLUP, ensuring that the plan reflects the priorities and values of residents.

It is important to note that the information contained in the Community Report will be considered in conjunction with all other feedback when revising the DNLUP.

## 1.3 Methodology

Information was presented to and received from participants in Kimmirut in accordance with the Nunavut Planning Commission's Community Engagement Strategy (Engagement Strategy). The Engagement Strategy provides for the following methods for presenting and receiving information;

- **Open house;** information contained in the Draft Nunavut Land Use Plan (DNLUP) was presented on 7 multi lingual large format poster boards. Participants were encouraged to review the posters, ask questions and provide feedback. Comments and questions were recorded by NPC staff and are contained in Appendix 1.
- **Elected Officials Meeting;** The NPC Chairperson and NPC staff met with senior and elected officials in the community. The development process for the DNLUP, its content and next steps were presented.

Comments and questions were recorded during the session and are contained in Appendix 2.

- **Public Workshop;** A formal presentation of the Draft Plan content was provided to participants, including a slide overview of its content. Following the presentation, questions and comments were received from participants. The questions, comments and responses are contained in Appendix 3.

A mapping session followed the presentation of the Draft Plan. The mapping session involved discussions regarding the topics presented in the DNLUP and encouraged participants to identify additional areas and issues important for inclusion in a NLUP. Information received during this session was recorded by NPC staff and is included in Appendix 4.

- **Wrap Up Session;** Staff was available to discuss the areas identified during the mapping and identify any additional issues or areas of interest. Information received during this session was recorded by NPC staff and is included in Appendix 5.

Areas that participants identified during mapping sessions as important to a particular goal have, in the majority of cases, been included in this report as they were recorded. In instances where participants identified an area that was better suited to another goal, the area has been reclassified to the more suitable goal and has been verified as appropriate to do so by the Community.

A follow-up meeting was held on May 17, 2013 to review a draft version of this report with the Hamlet Council, Hunters and Trappers Organization, and Community Lands and Resource Committee. A summary of this meeting is included in Appendix 6.

## 1.4 Public Awareness

The NPC raised public awareness regarding its visit to Kimmirut in accordance with the Engagement Strategy.

The DNLUP and supporting materials were mailed to the Mayor and Council of Kimmirut, the Hunters and Trappers

Organizations (HTO) in September 2012. In addition, letters of invitation were sent to the Kimmirut Mayor and Council and HTO in advance of the NPC's visit to advise of the meetings and to encourage participation. Follow up phone calls were also made.

Public notice of the various events was provided in the following ways:

- **Nunatsiaq News and Nunavut News/North;** notice of community meetings were posted in both newspapers a minimum of 45 days in advance.
- **Co-op cable TV;** notice of community meetings was run a minimum of 45 days in advance for one week and run again for no less than 14 days before the meetings.
- **Community radio;** notices were read by the hosts and a live interview with the Commission Chairperson was conducted.
- **Community bulletin boards;** notices were posted on bulletin boards around the community 45 days and again 14 days in advance of the meetings.
- **Community mail drop;** one page flyers that announced the meetings and their purpose were delivered to the post office in each community for all mail boxes that accept unaddressed ad-mail.
- **nunavut.ca;** the schedule of community visits, the Draft Plan, and all supporting information was available on the Commission's website.

## 1.5 Community Population and Participation

Kimmirut is a community of approximately 455 people (Statistics Canada, 2011 Census). It is located on the southern coast of Baffin Island (see Figure 1).

The Commission visited the community on January 10-11, 2013. All events occurred as scheduled. The sessions were attended as follows;

- **Elected Officials Meeting;** the Mayor and members of the Hamlet Council and HTO attended the elected officials meeting.
- **Open house;** approximately 50 people attended the open house to review the Draft Plan.
- **Public Workshop;** approximately 45 people attended the presentation of the DNLUP and facilitated mapping sessions. Information was recorded in two separate mapping groups.
- **Wrap Up Session;** approximately 15 people attended the wrap up session.

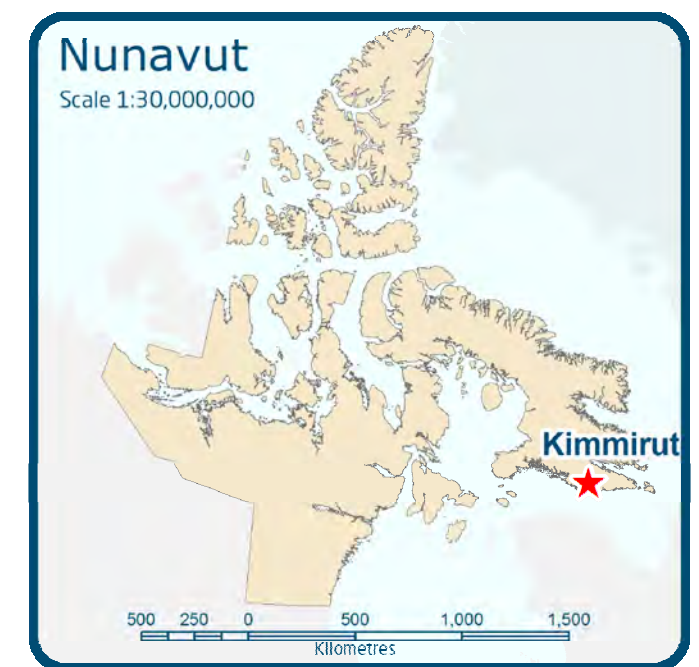


Figure 1. Location of Kimmirut

# Chapter 2: Protecting and Sustaining the Environment

Protecting and Sustaining the Environment was one of five topics presented to and discussed by participants during the Open House, Elected Officials Meeting, Public Workshop and Wrap up Session, collectively referred to in this document as information sharing and gathering sessions.

## 2.1 Areas presented to participants

During the information sharing and gathering sessions, participants were presented the following areas and issues as important to Protecting and Sustaining the Environment.

- Key bird habitat sites
- Caribou Habitat sites
- Atlantic Cod Lakes
- Cumulative Impacts
- Transboundary considerations
- Climate change

The importance of these issues and areas to Protecting and Sustaining the Environment was not disputed by participants during the information sharing and gathering sessions.

## 2.2 Areas identified by participants

Additional areas and issues were identified by participants as important to Protecting and Sustaining the Environment during the information sharing and gathering sessions. These additional areas are;

- Important bird areas
- Walrus areas
- Fishing areas
- Hunting areas
- Polar bear habitat

## 2.3 Areas of importance to Protecting and Sustaining the Environment

Areas and issues discussed during the information sharing and gathering sessions as important to Protecting and Sustaining the Environment are illustrated on Map 1, including areas identified in the DNLUP and areas identified by the community. Scanned images of the maps on which community feedback was recorded can be found in Appendix 4.

Based on discussions with participants, the NPC understands that:

- The areas identified on Map 1 are considered by the Community to be important to Protecting and Sustaining the Environment.
- In these areas, the community would like the NLUP to encourage activities that support environmental protection and management needs, including wildlife conservation, protection and management.

This feedback will be considered in conjunction with all other feedback when revising the DNLUP.

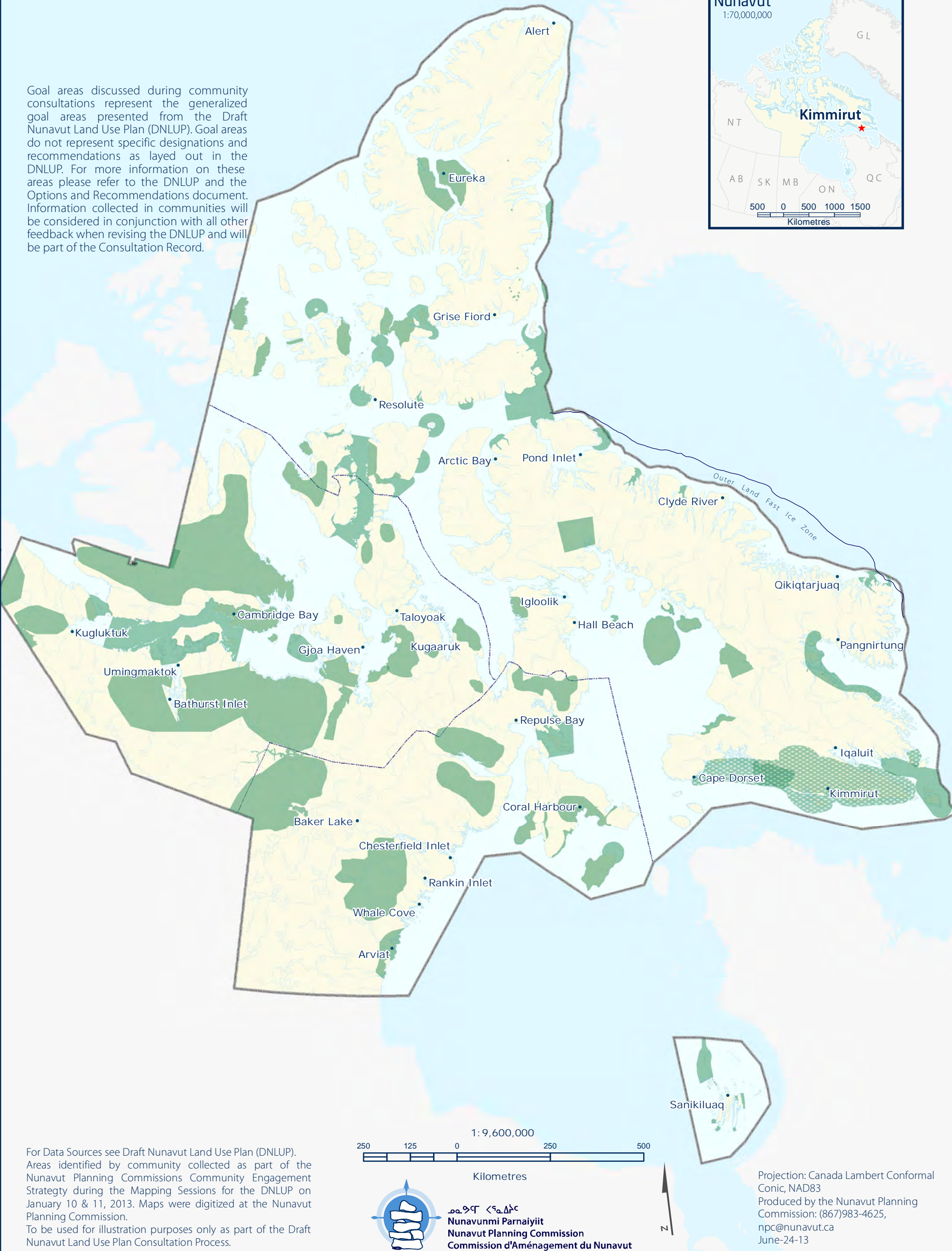




**PSE Goal areas from the DNLUP discussed during community consultations**

**Additional PSE Goal areas identified during community consultations**

Goal areas discussed during community consultations represented the generalized goal areas presented from the Draft Nunavut Land Use Plan (DNLUP). Goal areas do not represent specific designations and recommendations as laid out in the DNLUP. For more information on these areas please refer to the DNLUP and the Options and Recommendations document. Information collected in communities will be considered in conjunction with all other feedback when revising the DNLUP and will be part of the Consultation Record.



For Data Sources see Draft Nunavut Land Use Plan (DNLUP). Areas identified by community collected as part of the Nunavut Planning Commissions Community Engagement Strategy during the Mapping Sessions for the DNLUP on January 10 & 11, 2013. Maps were digitized at the Nunavut Planning Commission.

To be used for illustration purposes only as part of the Draft Nunavut Land Use Plan Consultation Process.

Projection: Canada Lambert Conformal  
Conic, NAD83  
Produced by the Nunavut Planning  
Commission: (867)983-4625,  
[npc@nunavut.ca](mailto:npc@nunavut.ca)  
June-24-13



## Chapter 3: Encouraging Conservation Planning

Encouraging Conservation Planning was one of five topics presented to and discussed by the participants during the information sharing and gathering sessions.

### 3.1 Areas presented to participants

During the information sharing and gathering sessions, participants were presented the following areas and issues as important to Encouraging Conservation Planning;

- National Parks Awaiting Full Establishment
- Proposed National Parks
- National Marine Conservation Areas
- Thelon Wildlife Sanctuary
- Migratory Bird Sanctuaries
- National Wildlife Areas
- National Historic Sites
- Territorial Historic Sites
- Heritage Rivers

The importance of these issues and areas to Encouraging Conservation Planning was not disputed by participants during the information sharing and gathering sessions.

### 3.2 Areas identified by participants

Additional areas and issues were identified by participants as important to Encouraging Conservation Planning during the information sharing and gathering sessions. These additional areas are.

- Traditional camping areas
- Eider duck nesting

### 3.3 Areas of importance to Encouraging Conservation Planning

Areas and issues discussed during the information sharing and gathering sessions as important to Encouraging Conservation Planning are illustrated on Map 2, including areas identified in the DNLUP and areas identified by the community. Scanned images of the maps on which community feedback was recorded can be found in Appendix 4.

Based on discussions with participants, the NPC understands that:

- The areas identified on Map 2 are considered by the Community to be important to Encouraging Conservation Planning.
- In these areas, the community would like the NLUP to encourage activities that support environmental protection and management needs, including wildlife conservation, protection and management.

This feedback will be considered in conjunction with all other feedback when revising the DNLUP.





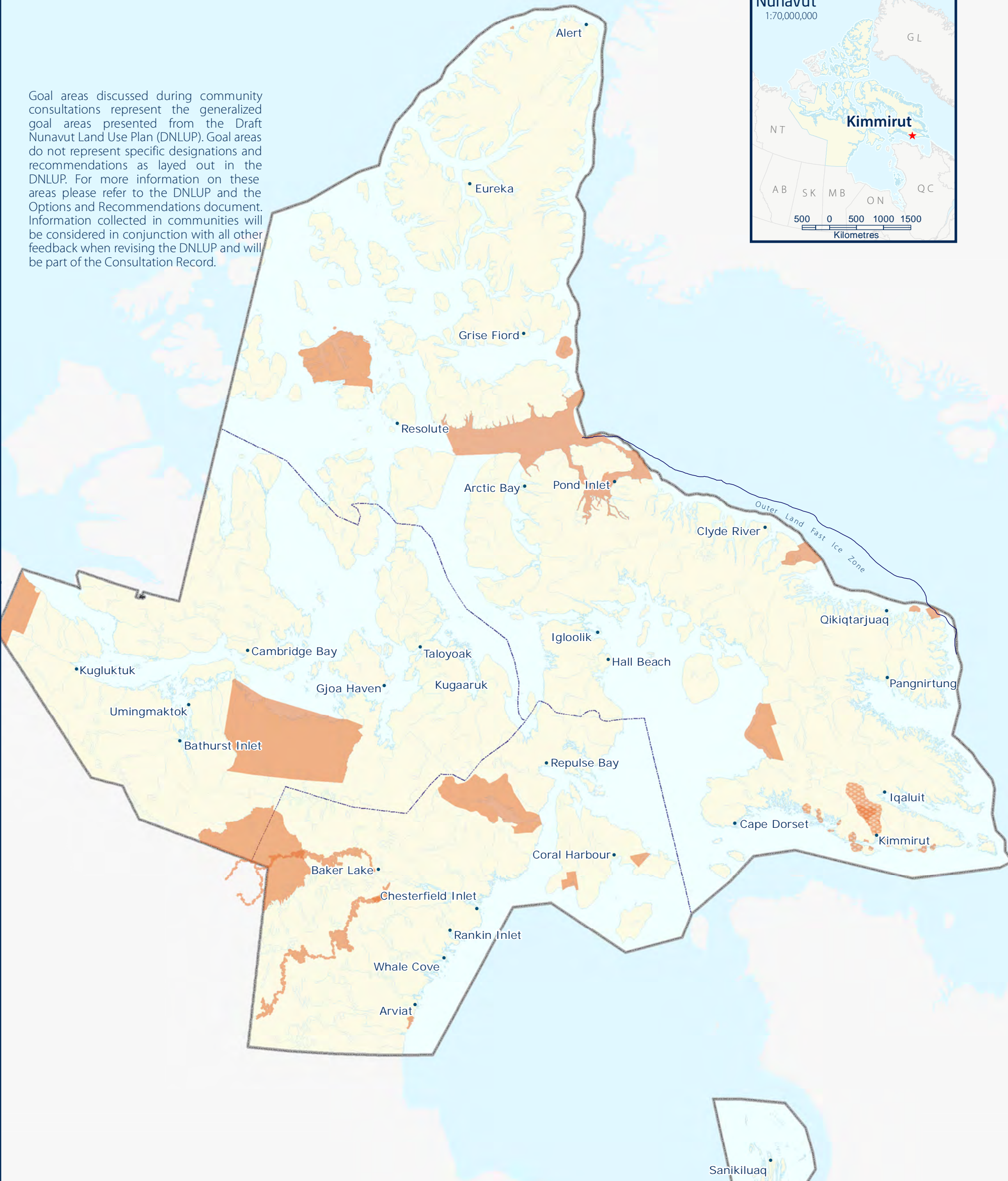


ECP Goal areas from the DNLUP discussed during community consultations



Additional ECP Goal areas identified during community consultations

Goal areas discussed during community consultations represent the generalized goal areas presented from the Draft Nunavut Land Use Plan (DNLUP). Goal areas do not represent specific designations and recommendations as layed out in the DNLUP. For more information on these areas please refer to the DNLUP and the Options and Recommendations document. Information collected in communities will be considered in conjunction with all other feedback when revising the DNLUP and will be part of the Consultation Record.



For Data Sources see Draft Nunavut Land Use Plan (DNLUP). Areas identified by community collected as part of the Nunavut Planning Commissions Community Engagement Strategy during the Mapping Sessions for the DNLUP on January 10 & 11, 2013. Maps were digitized at the Nunavut Planning Commission. To be used for illustration purposes only as part of the Draft Nunavut Land Use Plan Consultation Process.



ᓄᓇᓂᓄᓐ ᐸᓐᓇᓂᓄᓐ  
Nunavunmi Parnaiyiit  
Nunavut Planning Commission  
Commission d'Aménagement du Nunavut



Projection: Canada Lambert Conformal Conic, NAD83  
Produced by the Nunavut Planning Commission: (867)983-4625, npc@nunavut.ca  
June-24-13



# Chapter 4: Building Healthier Communities

Building Healthier Communities was one of five topics presented to and discussed by the participants during the information sharing and gathering sessions.

## 4.1 Areas presented to participants

During the information sharing and gathering sessions, participants were presented the following areas and issues as important to Building Healthier Communities;

- Areas of Community Interest
- Community Land Use
- Transportation Infrastructure
- Unincorporated Communities
- Alternative Energy Sources
- Community drinking water supplies
- Land remediation
- Northern Contaminated Sites Program
- Aerodromes
- Canadian Forces Station
- Northern Warning System sites

The importance of these issues and areas to Building Healthier Communities was not disputed by participants.

## 4.2 Areas identified by participants

Additional areas and issues were identified by participants as important to contributing to the goal of Building Healthier Communities during the information sharing and gathering sessions. These additional areas are;

- Contaminated sites

- Camping areas/drinking water
- Polar bear hunting area

## 4.3 Areas of importance to Building Healthier Communities

Areas and issues discussed during the information sharing and gathering sessions as important to Building Healthier Communities are illustrated on Map 3, including areas identified in the DNLUP and areas identified by the community. Scanned images of the maps on which community feedback was recorded can be found in Appendix 4.



Based on discussions with participants, the NPC understands that:

- The areas identified on Map 3 are considered by the Community to be important to Building Healthier Communities.
- In these areas, the community would like the NLUP to encourage activities that support community needs and cultural priorities.

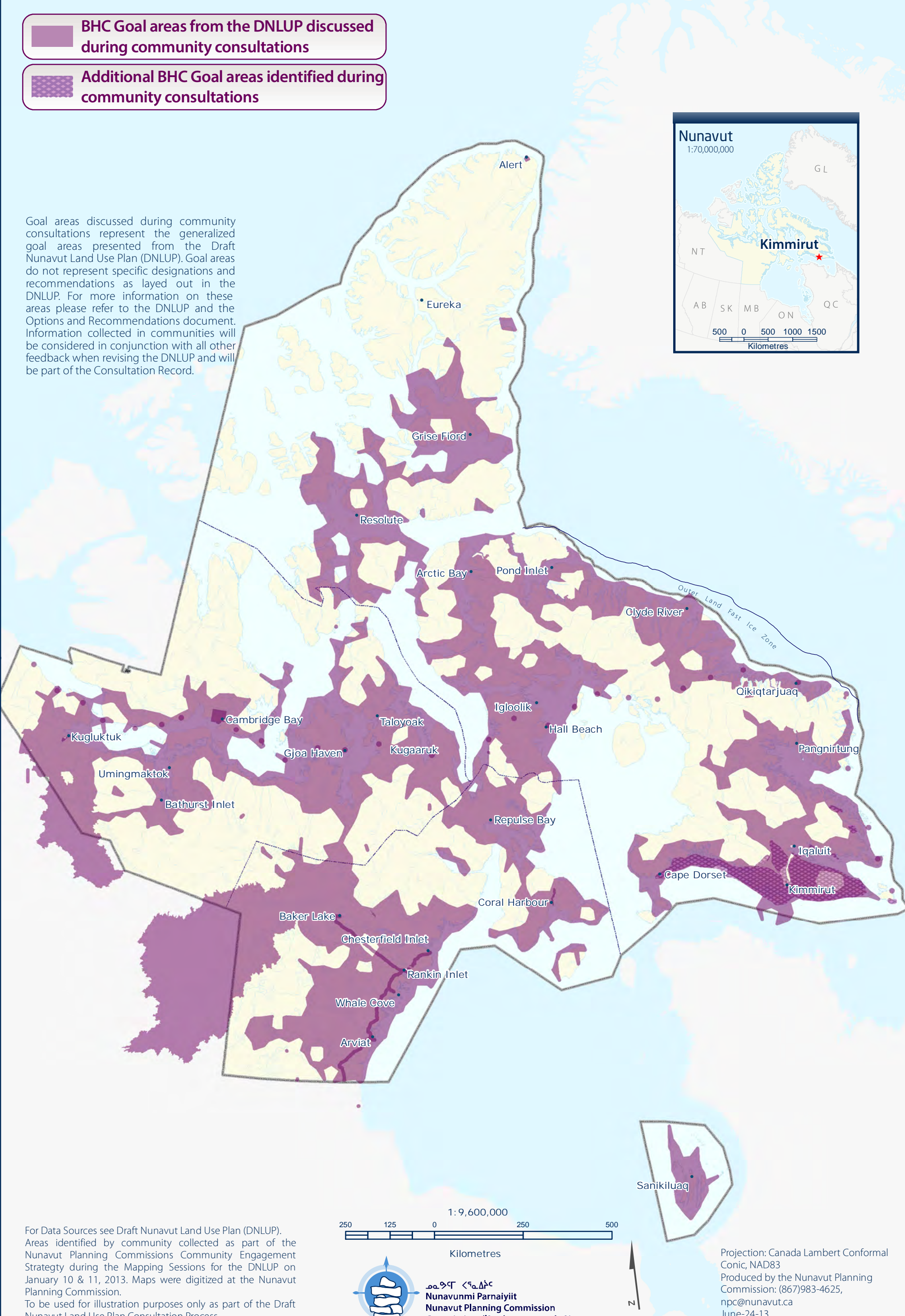
This feedback will be considered in conjunction with all other feedback when revising the DNLUP.





-  BHC Goal areas from the DNLUP discussed during community consultations
-  Additional BHC Goal areas identified during community consultations

Goal areas discussed during community consultations represent the generalized goal areas presented from the Draft Nunavut Land Use Plan (DNLUP). Goal areas do not represent specific designations and recommendations as layed out in the DNLUP. For more information on these areas please refer to the DNLUP and the Options and Recommendations document. Information collected in communities will be considered in conjunction with all other feedback when revising the DNLUP and will be part of the Consultation Record.



For Data Sources see Draft Nunavut Land Use Plan (DNLUP). Areas identified by community collected as part of the Nunavut Planning Commissions Community Engagement Strategy during the Mapping Sessions for the DNLUP on January 10 & 11, 2013. Maps were digitized at the Nunavut Planning Commission. To be used for illustration purposes only as part of the Draft Nunavut Land Use Plan Consultation Process.



ᑎᓄᓐᓂᓐ ᑕᓄᓐᓂᓐ  
Nunavunmi Parnaiyiit  
Nunavut Planning Commission  
Commission d'Aménagement du Nunavut



# Chapter 5: Encouraging Sustainable Economic Development

Encouraging Sustainable Economic Development was one of five topics presented to and discussed by the participants during the information sharing and gathering sessions.

## 5.1 Areas presented to participants

During the information sharing and gathering sessions, participants were presented with the following areas important to Encouraging Sustainable Economic Development;

- Mineral Exploration and Production
- Oil and Gas Exploration
- Commercial Fisheries

The importance of these issues and areas to Encouraging Sustainable Economic Development was not disputed by participants during the information sharing and gathering sessions.

## 5.2 Areas identified by participants

Additional areas and issues were identified by participants as important to Encouraging Sustainable Economic Development during the information sharing and gathering sessions. The additional areas identified are;

- Commercial fisheries
- Sports hunting
- Soapstone quarries

## 5.3 Areas of importance to Encouraging Sustainable Economic Development

Areas and issues discussed during the information sharing and gathering sessions as important to Encouraging Sustainable Economic Development are illustrated on Map 4, including

areas identified in the DNLUP and areas identified by the community. Scanned images of the maps on which community feedback was recorded can be found in Appendix 4.

Based on discussions with participants, the NPC understands that:

- The areas identified on Map 4 are considered by the Community to be important to Encouraging Sustainable Economic Development.
- In these areas, the community would like the NLUP to encourage activities that support economic opportunities and needs.

This feedback will be considered in conjunction with all other feedback when revising the DNLUP.

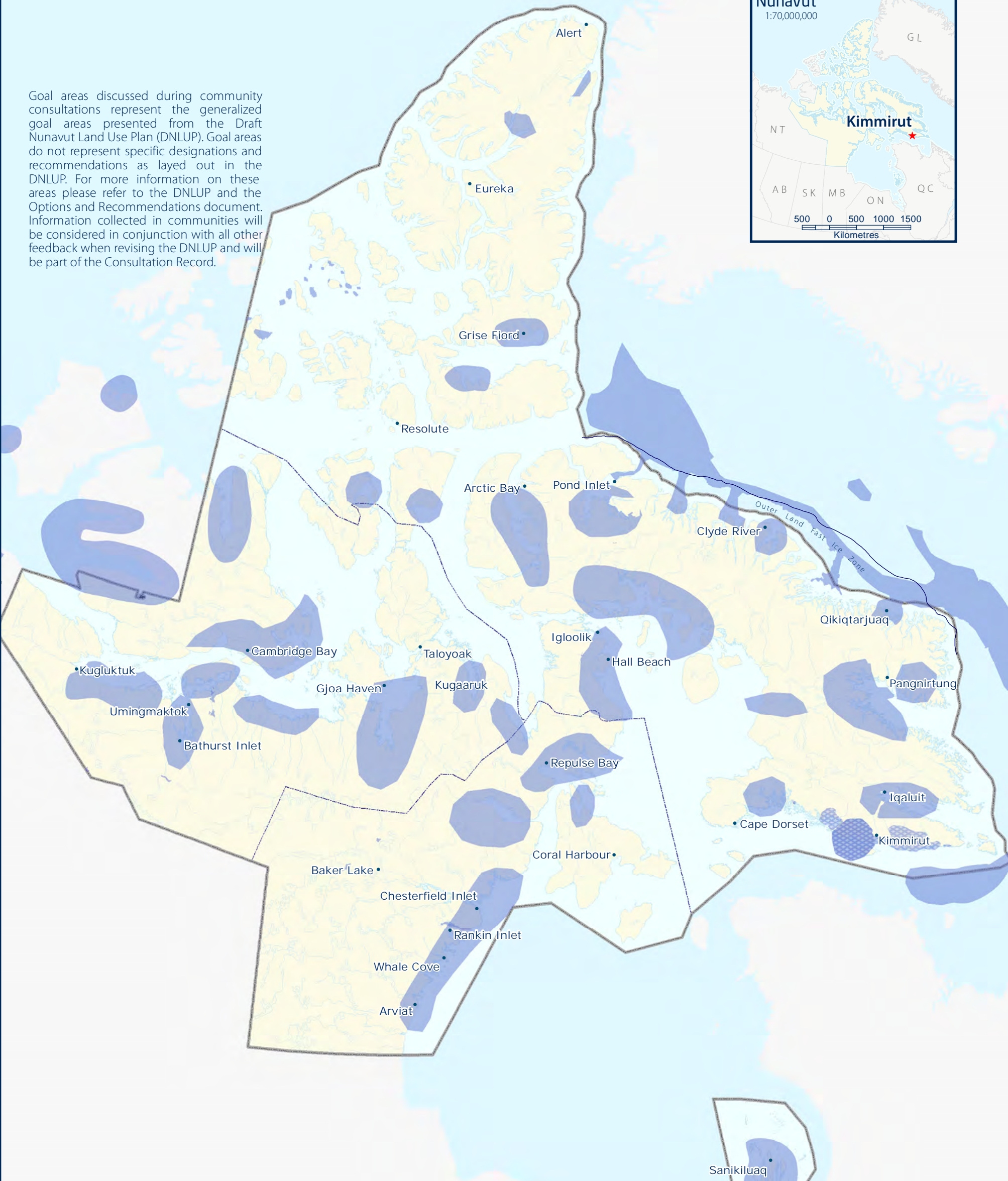




ESED Goal areas from the DNLUP discussed during community consultations

Additional ESED Goal areas identified during community consultations

Goal areas discussed during community consultations represent the generalized goal areas presented from the Draft Nunavut Land Use Plan (DNLUP). Goal areas do not represent specific designations and recommendations as layed out in the DNLUP. For more information on these areas please refer to the DNLUP and the Options and Recommendations document. Information collected in communities will be considered in conjunction with all other feedback when revising the DNLUP and will be part of the Consultation Record.



For Data Sources see Draft Nunavut Land Use Plan (DNLUP). Areas identified by community collected as part of the Nunavut Planning Commissions Community Engagement Strategy during the Mapping Sessions for the DNLUP on January 10 & 11, 2013. Maps were digitized at the Nunavut Planning Commission. To be used for illustration purposes only as part of the Draft Nunavut Land Use Plan Consultation Process.

2501250250500

Kilometres



ᓄᓇᓂᓄᓐ ᐸᓐᓇᐱᓐᓴᓐ

Nunavunmi Parnaiyiit

Nunavut Planning Commission

Commission d'Aménagement du Nunavut

Projection: Canada Lambert Conformal Conic, NAD83

Produced by the Nunavut Planning Commission: (867)983-4625, npc@nunavut.ca

June-24-13



### 6.1 Areas identified in the Draft Plan

The DNLUP identifies areas important for a variety of uses. These areas were presented to participants during the workshop as Mixed Use Areas. These areas, as they occur around the community, are illustrated on Map 5.

### 6.2 Areas identified by participants

No additional areas were identified as Mixed Use by participants. However, some areas identified as Mixed Use in the DNLUP were considered by participants to require additional protection because of their particular qualities. These areas and the goals they are important for are identified on Map 6.

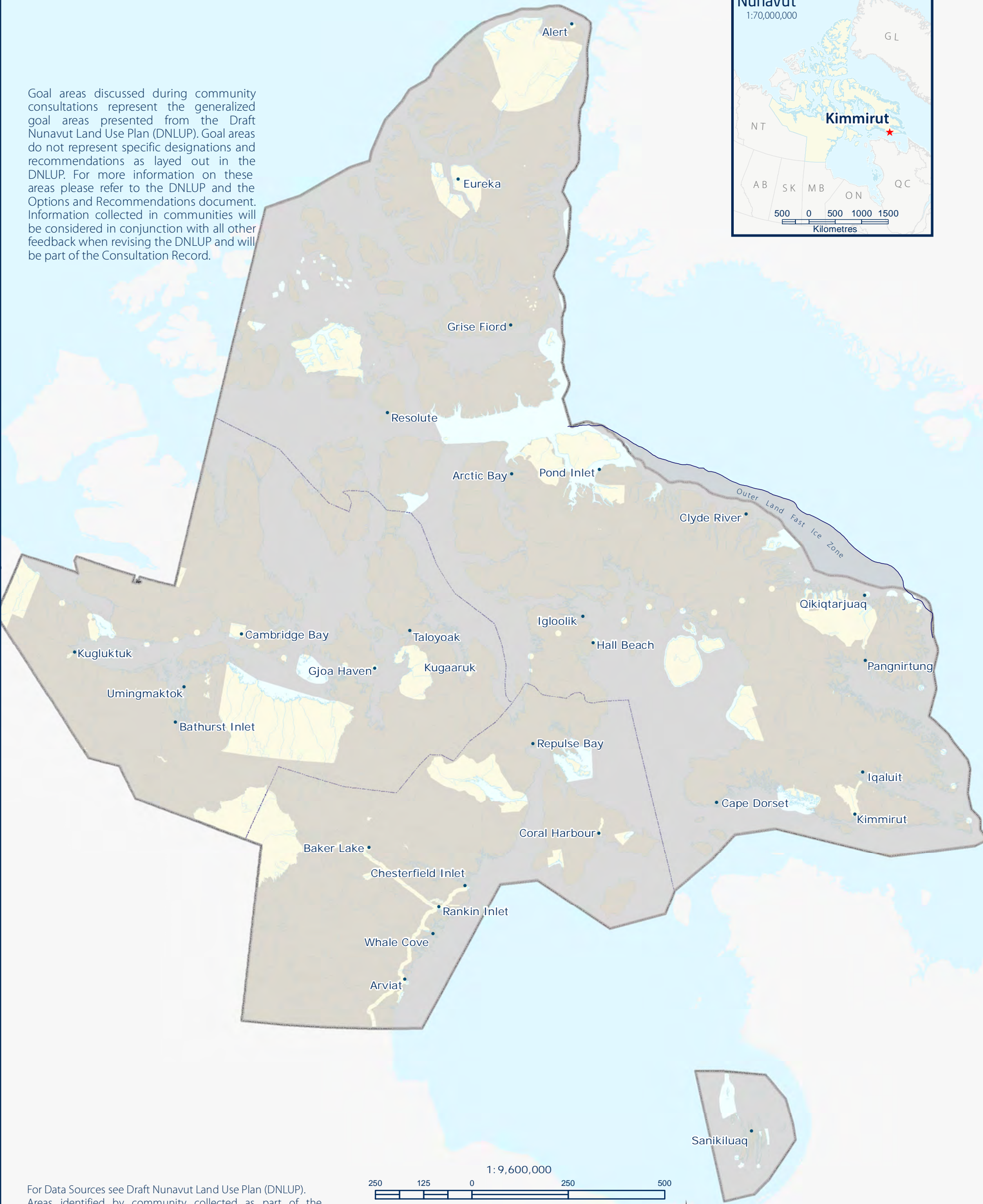






MU Goal areas from DNLUP discussed during community consultations

Goal areas discussed during community consultations represent the generalized goal areas presented from the Draft Nunavut Land Use Plan (DNLUP). Goal areas do not represent specific designations and recommendations as layed out in the DNLUP. For more information on these areas please refer to the DNLUP and the Options and Recommendations document. Information collected in communities will be considered in conjunction with all other feedback when revising the DNLUP and will be part of the Consultation Record.



For Data Sources see Draft Nunavut Land Use Plan (DNLUP). Areas identified by community collected as part of the Nunavut Planning Commissions Community Engagement Strategy during the Mapping Sessions for the DNLUP on January 10 & 11, 2013. Maps were digitized at the Nunavut Planning Commission. To be used for illustration purposes only as part of the Draft Nunavut Land Use Plan Consultation Process.



ᓄᓇᓂᓄᓐ ᐸᓐᓇᐱᓐᓐ  
Nunavunmi Parnaiyiit  
Nunavut Planning Commission  
Commission d'Aménagement du Nunavut



Projection: Canada Lambert Conformal Conic, NAD83  
Produced by the Nunavut Planning Commission: (867)983-4625, npc@nunavut.ca  
June-24-13



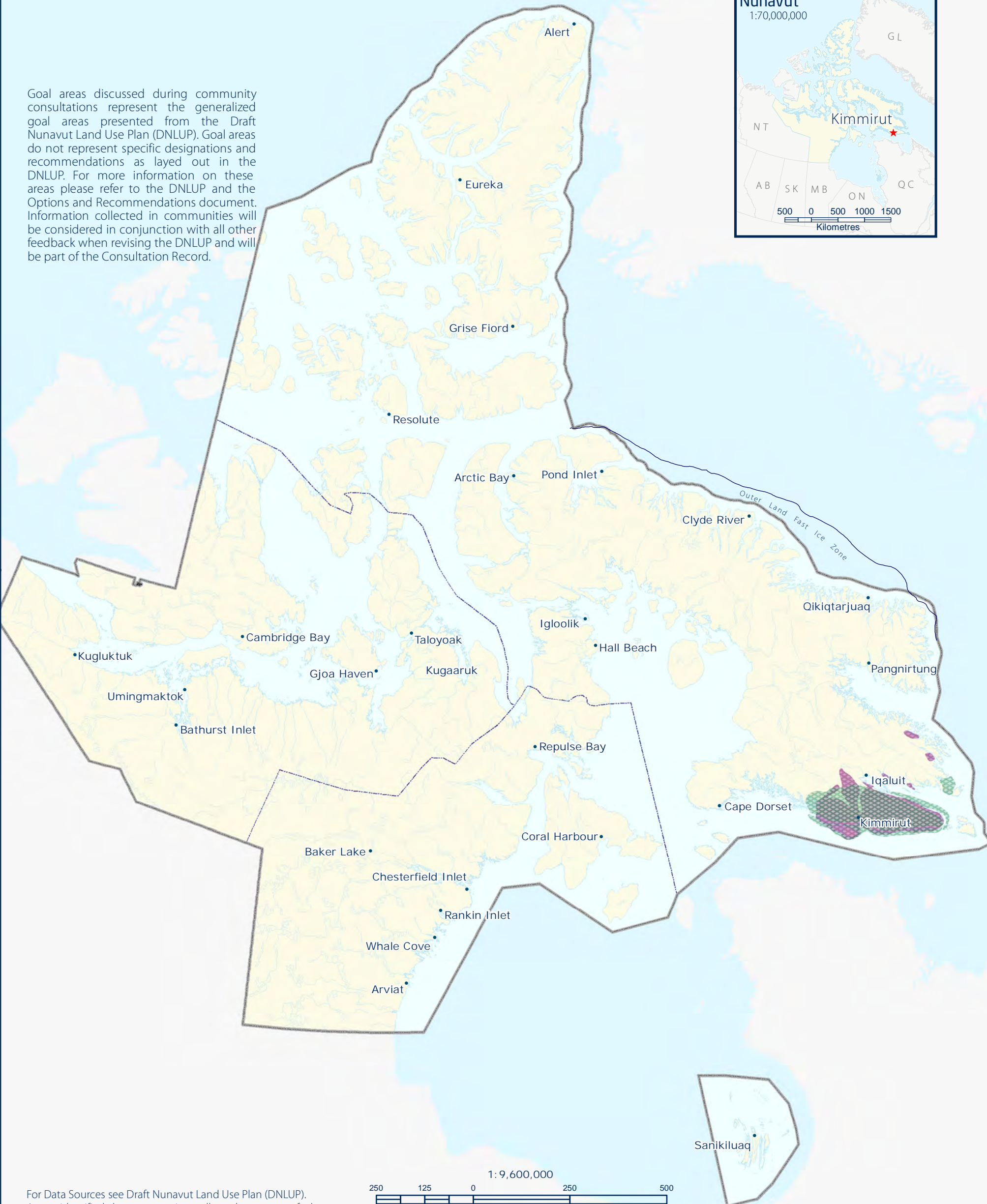


Additional PSE Goal areas identified during community consultations



Additional BHC Goal areas identified during community consultations

Goal areas discussed during community consultations represent the generalized goal areas presented from the Draft Nunavut Land Use Plan (DNLUP). Goal areas do not represent specific designations and recommendations as layed out in the DNLUP. For more information on these areas please refer to the DNLUP and the Options and Recommendations document. Information collected in communities will be considered in conjunction with all other feedback when revising the DNLUP and will be part of the Consultation Record.



For Data Sources see Draft Nunavut Land Use Plan (DNLUP). Areas identified by community collected as part of the Nunavut Planning Commissions Community Engagement Strategy during the Mapping Sessions for the DNLUP on January 10 & 11, 2013. Maps were digitized at the Nunavut Planning Commission. To be used for illustration purposes only as part of the Draft Nunavut Land Use Plan Consultation Process.



**Nunavunmi Parnaiyiit**  
**Nunavut Planning Commission**  
**Commission d'Aménagement du Nunavut**



Projection: Canada Lambert Conformal  
Conic, NAD83  
Produced by the Nunavut Planning  
Commission: (867)983-4625,  
npc@nunavut.ca  
April-23-13

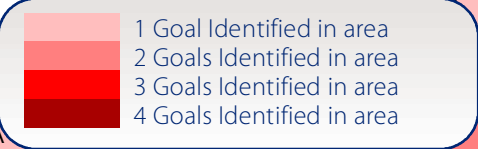


### 7.1 Areas identified for multiple goals

All areas discussed with the community as important for a particular goal are shown on Map 7. In some instances, areas have been identified as important for multiple goals. These areas, and the specific goals they are important to, are also shown on Map 7. In these areas, the NPC will take all of the identified goals and all other feedback into consideration when revising the DNLUP.





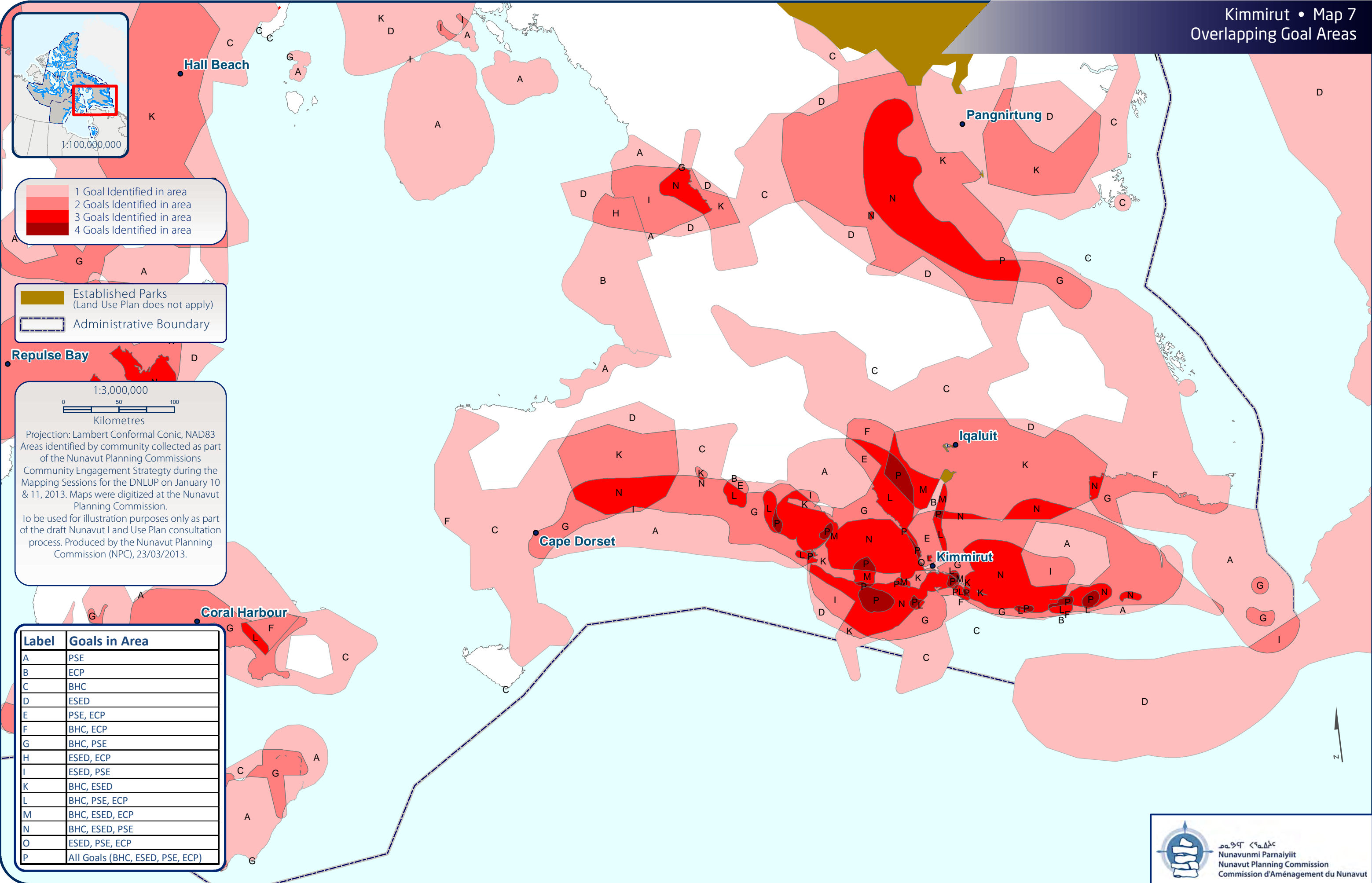


1:3,000,000

0 50 100  
Kilometres

Projection: Lambert Conformal Conic, NAD83  
Areas identified by community collected as part of the Nunavut Planning Commissions Community Engagement Strategy during the Mapping Sessions for the DNLUP on January 10 & 11, 2013. Maps were digitized at the Nunavut Planning Commission.  
To be used for illustration purposes only as part of the draft Nunavut Land Use Plan consultation process. Produced by the Nunavut Planning Commission (NPC), 23/03/2013.

Label	Goals in Area
A	PSE
B	ECP
C	BHC
D	ESED
E	PSE, ECP
F	BHC, ECP
G	BHC, PSE
H	ESED, ECP
I	ESED, PSE
K	BHC, ESED
L	BHC, PSE, ECP
M	BHC, ESED, ECP
N	BHC, ESED, PSE
O	ESED, PSE, ECP
P	All Goals (BHC, ESED, PSE, ECP)





## Appendix 1: Open House

During the open house, participants raised the following issues:

- Elders tell us the areas that are important. They know a lot and tell the younger people important areas





## Appendix 2: Elected Officials Meeting

The elected officials meeting was attended by the Mayor and members of the Hamlet Council and HTO. During the meeting, participants raised the following issues:

- Question: When does the plan apply to projects that are transboundary with the municipality?
  - The Commission responded that it depends on the project. Generally, municipal activities are not projects. But a mine or industrial activity is, and would be subject to the plan.
- There are parks in place but there are many areas that have not been explored.
- The community currently has a high unemployment rate.
- Sometimes the community is split in how they want activity to proceed.



## Appendix 3: Questions and Answers

During the community workshop, there was a question and answer period, which included a discussion of the following topics:

- Terminology question over the Inuktitut term for "Conservation Area".
  - The Commission clarified the use of the term.
- There are issues understanding different dialects. A terminology handbook would be useful.





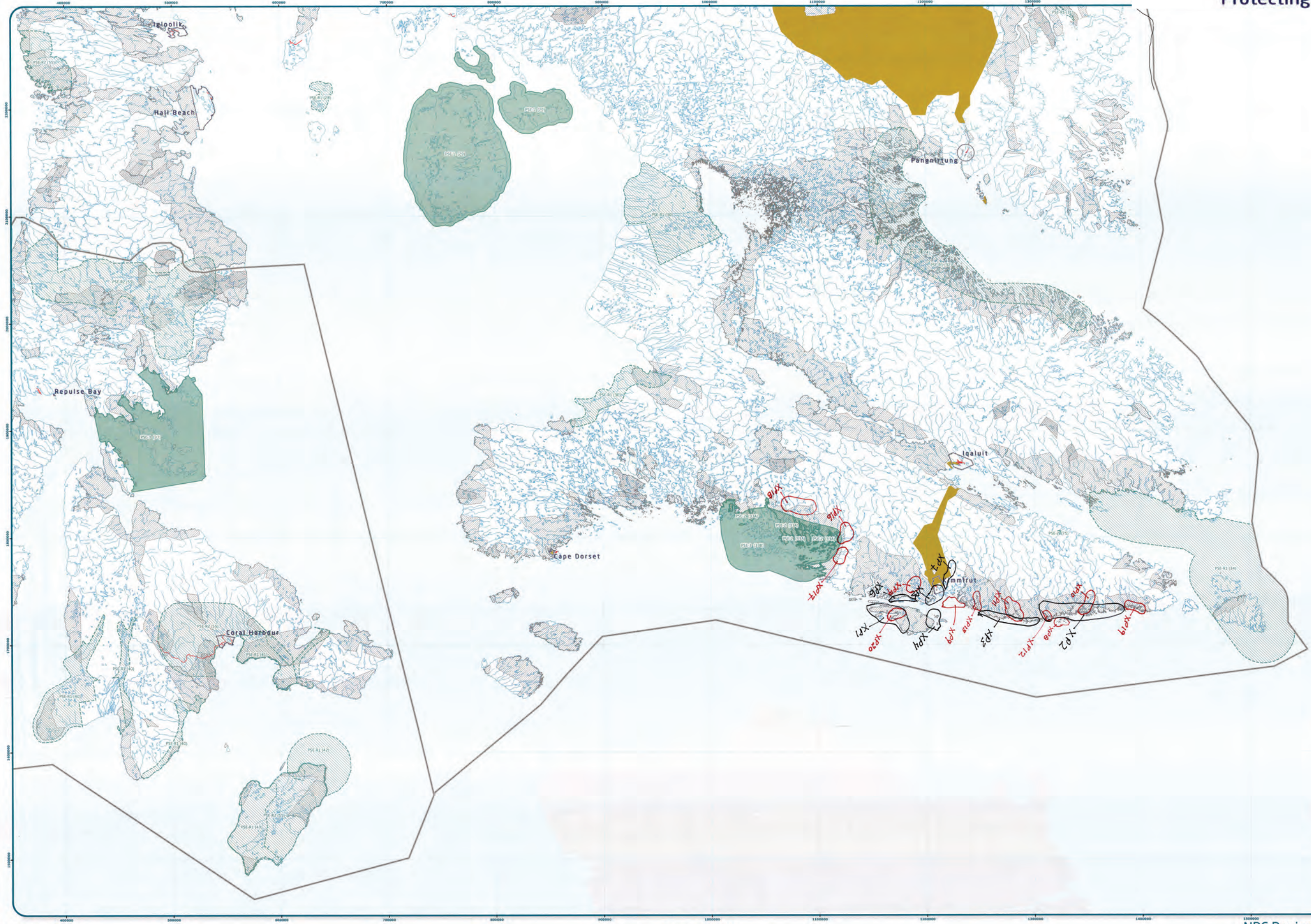
# Appendix 4: Community Workshop Scanned Maps

Two groups completed the mapping session to identify important areas. This Appendix contains the maps that were used by participants to identify areas that are important to the following land use planning goals:

- Protecting and Sustaining the Environment
- Encouraging Conservation Planning
- Building Healthier Communities
- Encouraging Sustainable Economic Development
- Mixed Use

Also included on each map is a reference table that includes the specific values that were identified for the area.





Designations	Permitted Uses	Prohibited Uses
PSE-1	Tourism, Recreation, Research	All Other Uses
PSE-2	Tourism, Recreation, Research	
PSE-3	Tourism, Recreation, Research, Marine Infrastructure, Marine Communications and Electrical Cables	
PSE-4		
PSE-5		
PSE-6		
PSE-7		
PSE-8		
PSE-9		
PSE-10		
PSE-11		
PSE-12		
PSE-13		
PSE-14		
PSE-15		
PSE-16		
PSE-17		
PSE-18		
PSE-19		
PSE-20		

Code	Comments
XP01	Birds in the area, important for protection
XP02	Ducks, Seagulls, murrens in the area, important for protection
XP03	Birds in the area, important for protection
XP04	Birds in the area, important for protection
XP05	Birds in the area, important for protection
XP06	Birds in the area, important for protection
XP07	Birds in the area, important for protection
XP08	Walrus in the area in the spring and autumn important for protection
XP09	Oil and gas and mining potential but also an area of Walrus, marine life. Would prefer the area protected.
XP10	Lots of fish/commercial fishing
XP11	Lots of fish/char
XP12	Char in the area
XP13	Fish spawn in the winter/spring/summer move to ocean
XP14	Lots of char lakes
XP15	Potential for char fisheries, needs further research
XP16	Lots of fish/char important for protection for a potential fishery
XP17	Lots of fish/char important for protection for a potential fishery
XP18	Lots of fish/char important for protection
XP19	Lots of fish/char important for protection
XP20	Lots of fish/char important for protection

Signature of Mapper: \_\_\_\_\_

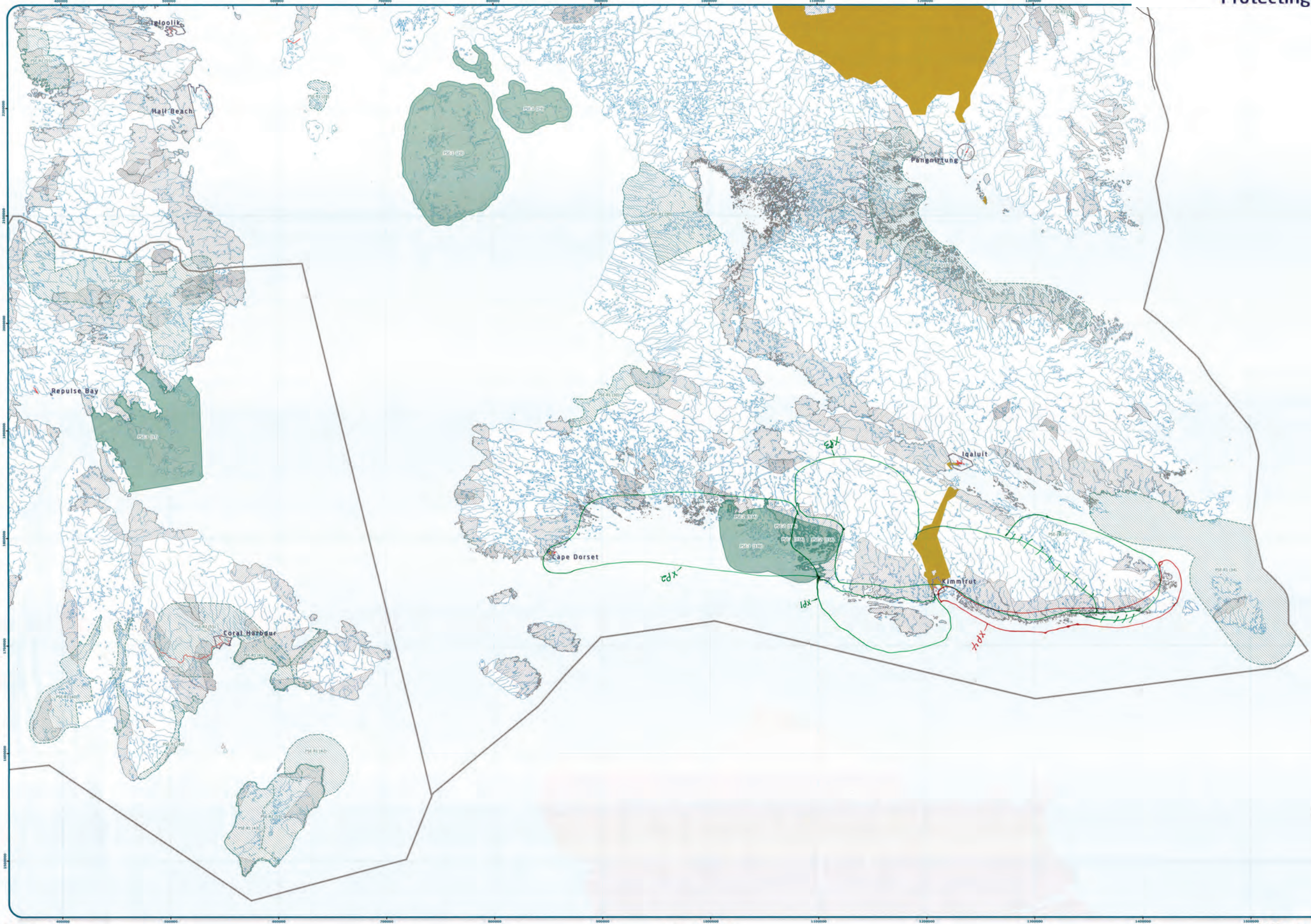
COORDINATE SYSTEM



Coordinate System: EPSG 42304 LCC  
Projection: Lambert Conformal Conic  
Datum: North American 1983  
False Easting: 0.0000  
False Northing: 0.0000  
Central Meridian: -95.0000  
Standard Parallel 1: 49.0000  
Standard Parallel 2: 77.0000  
Latitude Of Origin: 49.0000  
Units: Meter

Working Draft Sub-regional map data sources for Land Use Designations and Recommendations sources see draft Nunavut Land Use Plan and background material data source documents.  
Hatched created by utilizing Swiss method in Hatched toolset courtesy of ESR user forums. Water bodies created by merging all 1:250,000 NTS sheets in Nunavut, version 2.0 and selecting all waterbodies over 50 hectares in size. Land outside of Nunavut, courtesy of Geogratis. Administrative boundaries consist of NPC draft regional boundaries, created to reflect Regional Inuit Association jurisdictions, combined with municipal boundaries, provided by Natural Resources Canada cadastral data. Inuit Owned Lands courtesy of Nunavut Tunngavik Incorporated. Territorial parks from the Government of Nunavut, National Parks from Parks Canada. Data for areas within municipal boundaries obtained from Natural Resources Canada cadastral data. This map is to be used for reference purposes only by the NPC. Any further use of this map or data therein must be authorized by contacting the Nunavut Planning Commission at (867)993-4625 or email [ntw@nuplanning.com](mailto:ntw@nuplanning.com). Thursday, January 03, 2013





Designations	Permitted Uses	Prohibited Uses
PSE 1	Tourism, Recreation, Research	All Other Uses
PSE 2	Tourism, Recreation, Research	All Other Uses
PSE 3	Tourism, Recreation, Research, Marine Infrastructure, Marine Communications and Electrical Cables	All Other Uses

PSE 1 PSE 2 PSE 3 PSE 4 PSE 5 PSE 6 PSE 7 PSE 8 PSE 9 PSE 10 PSE 11 PSE 12 PSE 13 PSE 14 PSE 15 PSE 16 PSE 17 PSE 18 PSE 19 PSE 20 PSE 21 PSE 22 PSE 23 PSE 24 PSE 25 PSE 26 PSE 27 PSE 28 PSE 29 PSE 30 PSE 31 PSE 32 PSE 33 PSE 34 PSE 35 PSE 36 PSE 37 PSE 38 PSE 39 PSE 40 PSE 41 PSE 42 PSE 43 PSE 44 PSE 45 PSE 46 PSE 47 PSE 48 PSE 49 PSE 50 PSE 51 PSE 52 PSE 53 PSE 54 PSE 55 PSE 56 PSE 57 PSE 58 PSE 59 PSE 60 PSE 61 PSE 62 PSE 63 PSE 64 PSE 65 PSE 66 PSE 67 PSE 68 PSE 69 PSE 70 PSE 71 PSE 72 PSE 73 PSE 74 PSE 75 PSE 76 PSE 77 PSE 78 PSE 79 PSE 80 PSE 81 PSE 82 PSE 83 PSE 84 PSE 85 PSE 86 PSE 87 PSE 88 PSE 89 PSE 90 PSE 91 PSE 92 PSE 93 PSE 94 PSE 95 PSE 96 PSE 97 PSE 98 PSE 99 PSE 100		Reference Table for Recommendations
PSE-1	Project Proposals located in a very high habitat site should take into account impacts on the migratory birds that rely on the area.	
PSE-2	Project Proposals located in historic caribou calving grounds should take into account impacts on caribou calving, post calving stags and migration routes.	
PSE-3	Project Proposals located in and/or near known caribou use for crossing areas should take into account impacts that may impede the ability of caribou to cross the ice.	
PSE-6	Project Proposals located in portions of the Great Bear Lake watershed in Nunavut should take into account transboundary impacts that may reduce the conservation value of the watershed.	

Code	Comments
XP1	Hunting caribou, fishing, bird habitat- No development wanted
XP2	Eggs, bird nesting area, marine area for seal - No Development wanted
XP3	Caribou hunting, fishing, rabbit - No Development wanted
XP4	Polar bear habitat and fishing. Rivers and opening used for fishing and hunting - No Development wanted

Community Planning & Commission  
Community Consultation Plan  
Land Use Mapping Section

Community: \_\_\_\_\_  
Location: \_\_\_\_\_  
Region: \_\_\_\_\_  
Date: \_\_\_\_\_  
Community Plan: \_\_\_\_\_  
Map #: \_\_\_\_\_

Signatures of the Community signify its permission  
to conduct mapping within its territory.

1.	26.
2.	27.
3.	28.
4.	29.
5.	30.
6.	31.
7.	32.
8.	33.
9.	34.
10.	35.
11.	36.
12.	37.
13.	38.
14.	39.
15.	40.

Signature of Mapper: \_\_\_\_\_

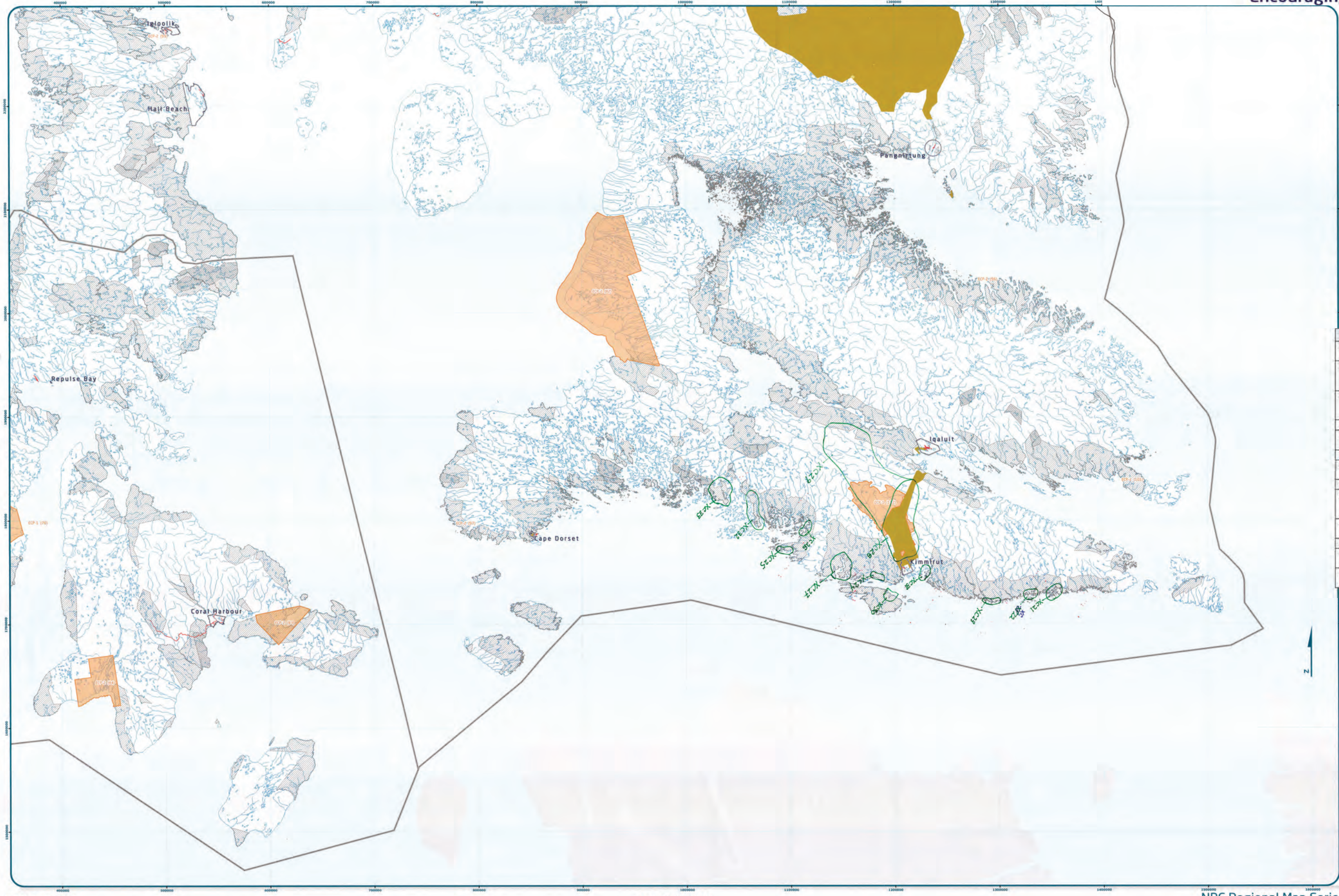


Coordinate System: EPSG 42304 LCC  
Projection: Lambert Conformal Conic  
Datum: North American 1983  
False Easting: 0.0000  
False Northing: 0.0000  
Central Meridian: -95.0000  
Standard Parallel 1: -69.0000  
Standard Parallel 2: 77.0000  
Latitude Of Origin: 69.0000  
Units: Meter

Working Draft Sub-regional map data sources  
For Land Use Designations and Recommendations sources see draft Nunavut Land Use Plan and background  
material data source documents.

Historical created by linking Swiss method in Hatched toolset courtesy of ESRi user forums. Water bodies  
created by merging all 1:250,000 NTS shapefiles in Nunavut, version 2.0, and selecting all waterbodies over  
50 hectares in size. Land outside of Nunavut, courtesy of Geopoints. Administrative boundaries consist of NRC  
draft regional boundaries, created to reflect Regional Inuit Association jurisdictions, combined with municipal  
boundaries, provided by Natural Resources Canada (cadastre data). Inuit Owned Lands courtesy of Nunavut  
Territory Incorporated. Terrestrial parks from the Government of Nunavut, National Parks from Parks Canada.  
Data for areas within municipal boundaries obtained from Natural Resources Canada (cadastre data).  
This map is to be used for reference purposes only by the NRC.  
Any further use of this map or data therein must be authorized by contacting the Nunavut Planning  
Commission at (867)983-4625 or email nrc@nrc.nunavut.ca  
Thursday January 03, 2013





Designations	Permitted Uses	Prohibited Uses
XC21	Tourism, Recreation, Research	All Other Uses
XC22	Tourism, Recreation, Research	All Other Uses
XC23	Tourism, Recreation, Research	All Other Uses
XC24	Tourism, Recreation, Research	All Other Uses
XC25	Tourism, Recreation, Research	All Other Uses
XC26	Tourism, Recreation, Research	All Other Uses
XC27	Tourism, Recreation, Research	All Other Uses
XC28	Tourism, Recreation, Research	All Other Uses
XC29	Tourism, Recreation, Research	All Other Uses
XC30	Tourism, Recreation, Research	All Other Uses
XC31	Tourism, Recreation, Research	All Other Uses
XC32	Tourism, Recreation, Research	All Other Uses
XC33	Tourism, Recreation, Research	All Other Uses

Code	Comments
XC21	Camping site/marine, mammals, birds, polar bears. Area used by forefathers.
XC22	Camping site/marine, mammals, birds, polar bears A long time ago there were people that lived here, a community of people.
XC23	Camping site/marine, mammals, birds, polar bears A long time ago there were people that lived here, a community of people.
XC24	Old camp site
XC25	Old camp site, hunting grounds for generations
XC26	Traditional camp site
XC27	Traditional camp site, important to protect these areas
XC28	Traditional camps
XC29	Caribou harvesting areas. Inuit used the land here, there are many markings and mostly travelled now in the winter.
XC30	Traditional winter camp and winter travel area
XC31	Traditional camp site, graves
XC32	Aberdeen Inlet, traditional camp. The area is called Amarjuk. It is a traditional land.
XC33	Traditional camp. Area used in the winter for camps.

Community: \_\_\_\_\_  
Location: \_\_\_\_\_  
Region: \_\_\_\_\_  
Scale: \_\_\_\_\_  
Community Plan: \_\_\_\_\_  
Map # \_\_\_\_\_

Signature of the Community or its permission: \_\_\_\_\_

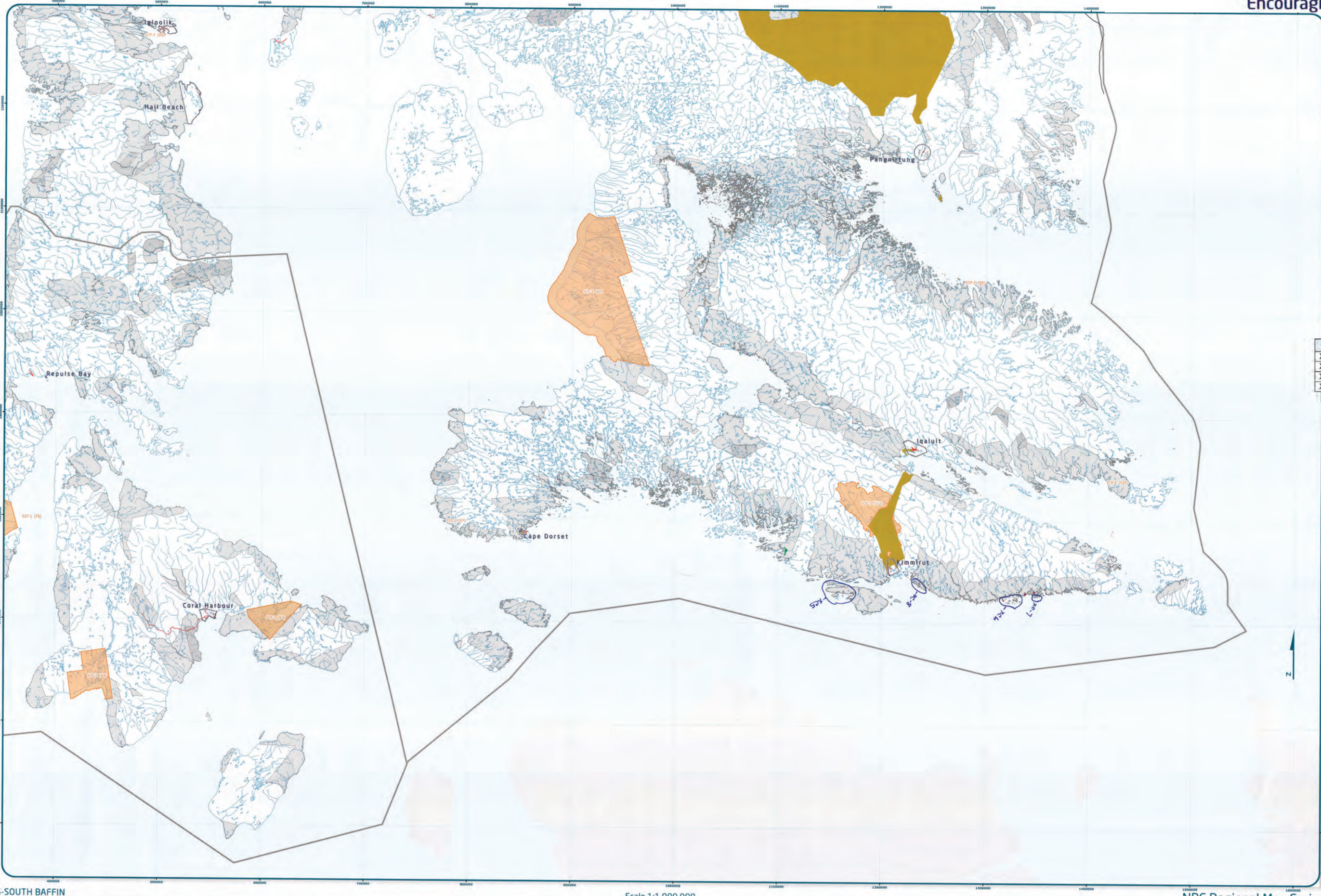
Signature of Mapper: \_\_\_\_\_



Coordinate System: EPSG 42304 LCC  
Projection: Lambert Conformal Conic  
Datum: North American 1983  
False Easting: 0.0000  
False Northing: 0.0000  
Central Meridian: -95.0000  
Standard Parallel 1: 49.0000  
Standard Parallel 2: 77.0000  
Latitude Of Origin: 49.0000  
Units: Meter

Warning: Draft Sub-regional map data source:  
For Land Use Designations and Recommendations sources see draft Nunavut Land Use Plan and background material data source documents.  
Witshade created by utilizing Swiss method in Witshade toolbox courtesy of ESRU user forums. Water bodies created by merging at 1:250,000 with shapefiles in Nunavut, version 2.0, and selecting all water bodies over 50 hectares in size. Land outside of Nunavut, courtesy of Geogratis. Administrative boundaries consist of NPC draft regional boundaries, created to reflect Regional Inuit Association jurisdictions, combined with municipal boundaries provided by Natural Resources Canada (unpublished data). Inuit Owned Lands courtesy of Nunavut Tunngavik Incorporated. Territorial parks from the Government of Nunavut. National Parks from Parks Canada. Data for areas within municipal boundaries obtained from Natural Resources Canada (unpublished data).  
This map is to be used for reference purposes only by the NPC.  
Any further use of this map or data therein must be authorized by contacting the Nunavut Planning Commission at (867) 993-4625 or email [nunavutplanning@nrcan.gc.ca](mailto:nunavutplanning@nrcan.gc.ca)  
Friday, January 04, 2023





Designations	Permitted Uses	Prohibited Uses
ECP-1	Tourism, Recreation, Research	All Other Uses
ECP-2	Tourism, Recreation, Research	
ECP-3	Tourism, Recreation, Research	
ECP-4	Tourism, Recreation, Research	
ECP-5	Tourism, Recreation, Research	
ECP-6	Tourism, Recreation, Research	
ECP-7	Tourism, Recreation, Research	
ECP-8	Tourism, Recreation, Research	
ECP-9	Tourism, Recreation, Research	
ECP-10	Tourism, Recreation, Research	
ECP-11	Tourism, Recreation, Research	
ECP-12	Tourism, Recreation, Research	
ECP-13	Tourism, Recreation, Research	
ECP-14	Tourism, Recreation, Research	
ECP-15	Tourism, Recreation, Research	
ECP-16	Tourism, Recreation, Research	
ECP-17	Tourism, Recreation, Research	
ECP-18	Tourism, Recreation, Research	
ECP-19	Tourism, Recreation, Research	
ECP-20	Tourism, Recreation, Research	
ECP-21	Tourism, Recreation, Research	
ECP-22	Tourism, Recreation, Research	
ECP-23	Tourism, Recreation, Research	
ECP-24	Tourism, Recreation, Research	
ECP-25	Tourism, Recreation, Research	
ECP-26	Tourism, Recreation, Research	
ECP-27	Tourism, Recreation, Research	
ECP-28	Tourism, Recreation, Research	
ECP-29	Tourism, Recreation, Research	
ECP-30	Tourism, Recreation, Research	
ECP-31	Tourism, Recreation, Research	
ECP-32	Tourism, Recreation, Research	
ECP-33	Tourism, Recreation, Research	
ECP-34	Tourism, Recreation, Research	
ECP-35	Tourism, Recreation, Research	
ECP-36	Tourism, Recreation, Research	
ECP-37	Tourism, Recreation, Research	
ECP-38	Tourism, Recreation, Research	
ECP-39	Tourism, Recreation, Research	
ECP-40	Tourism, Recreation, Research	
ECP-41	Tourism, Recreation, Research	
ECP-42	Tourism, Recreation, Research	
ECP-43	Tourism, Recreation, Research	
ECP-44	Tourism, Recreation, Research	
ECP-45	Tourism, Recreation, Research	
ECP-46	Tourism, Recreation, Research	
ECP-47	Tourism, Recreation, Research	
ECP-48	Tourism, Recreation, Research	
ECP-49	Tourism, Recreation, Research	
ECP-50	Tourism, Recreation, Research	
ECP-51	Tourism, Recreation, Research	
ECP-52	Tourism, Recreation, Research	
ECP-53	Tourism, Recreation, Research	
ECP-54	Tourism, Recreation, Research	
ECP-55	Tourism, Recreation, Research	
ECP-56	Tourism, Recreation, Research	
ECP-57	Tourism, Recreation, Research	
ECP-58	Tourism, Recreation, Research	
ECP-59	Tourism, Recreation, Research	
ECP-60	Tourism, Recreation, Research	
ECP-61	Tourism, Recreation, Research	
ECP-62	Tourism, Recreation, Research	
ECP-63	Tourism, Recreation, Research	
ECP-64	Tourism, Recreation, Research	
ECP-65	Tourism, Recreation, Research	
ECP-66	Tourism, Recreation, Research	
ECP-67	Tourism, Recreation, Research	
ECP-68	Tourism, Recreation, Research	
ECP-69	Tourism, Recreation, Research	
ECP-70	Tourism, Recreation, Research	
ECP-71	Tourism, Recreation, Research	
ECP-72	Tourism, Recreation, Research	
ECP-73	Tourism, Recreation, Research	
ECP-74	Tourism, Recreation, Research	
ECP-75	Tourism, Recreation, Research	
ECP-76	Tourism, Recreation, Research	
ECP-77	Tourism, Recreation, Research	
ECP-78	Tourism, Recreation, Research	
ECP-79	Tourism, Recreation, Research	
ECP-80	Tourism, Recreation, Research	
ECP-81	Tourism, Recreation, Research	
ECP-82	Tourism, Recreation, Research	
ECP-83	Tourism, Recreation, Research	
ECP-84	Tourism, Recreation, Research	
ECP-85	Tourism, Recreation, Research	
ECP-86	Tourism, Recreation, Research	
ECP-87	Tourism, Recreation, Research	
ECP-88	Tourism, Recreation, Research	
ECP-89	Tourism, Recreation, Research	
ECP-90	Tourism, Recreation, Research	
ECP-91	Tourism, Recreation, Research	
ECP-92	Tourism, Recreation, Research	
ECP-93	Tourism, Recreation, Research	
ECP-94	Tourism, Recreation, Research	
ECP-95	Tourism, Recreation, Research	
ECP-96	Tourism, Recreation, Research	
ECP-97	Tourism, Recreation, Research	
ECP-98	Tourism, Recreation, Research	
ECP-99	Tourism, Recreation, Research	
ECP-100	Tourism, Recreation, Research	

Code	Comments
XC5	Eider Ducks (Migratory birds)
XC6	Eider duck nesting
XC7	Eider duck nesting
XC8	Eider duck nesting

Map of the study area showing land use designations and recommendations. The map includes labels for locations like Iqaluit, Pangnirtung, Cape Dorset, Coral Harbour, Repulse Bay, and Hail Beach. Various colored areas represent different land use designations and recommendations, with codes like ECP-1, ECP-2, ECP-3, ECP-4, ECP-5, ECP-6, ECP-7, ECP-8, ECP-9, ECP-10, ECP-11, ECP-12, ECP-13, ECP-14, ECP-15, ECP-16, ECP-17, ECP-18, ECP-19, ECP-20, ECP-21, ECP-22, ECP-23, ECP-24, ECP-25, ECP-26, ECP-27, ECP-28, ECP-29, ECP-30, ECP-31, ECP-32, ECP-33, ECP-34, ECP-35, ECP-36, ECP-37, ECP-38, ECP-39, ECP-40, ECP-41, ECP-42, ECP-43, ECP-44, ECP-45, ECP-46, ECP-47, ECP-48, ECP-49, ECP-50, ECP-51, ECP-52, ECP-53, ECP-54, ECP-55, ECP-56, ECP-57, ECP-58, ECP-59, ECP-60, ECP-61, ECP-62, ECP-63, ECP-64, ECP-65, ECP-66, ECP-67, ECP-68, ECP-69, ECP-70, ECP-71, ECP-72, ECP-73, ECP-74, ECP-75, ECP-76, ECP-77, ECP-78, ECP-79, ECP-80, ECP-81, ECP-82, ECP-83, ECP-84, ECP-85, ECP-86, ECP-87, ECP-88, ECP-89, ECP-90, ECP-91, ECP-92, ECP-93, ECP-94, ECP-95, ECP-96, ECP-97, ECP-98, ECP-99, ECP-100.

Community:  
Location:  
Region:  
Name:  
Community ID:  
Map #:

Signatures of the Community signatory as permission  
form to conduct mapping session as follows:

1.	16
2.	17
3.	18
4.	19
5.	20
6.	21
7.	22
8.	23
9.	24
10.	25
11.	26
12.	27
13.	28
14.	29
15.	30

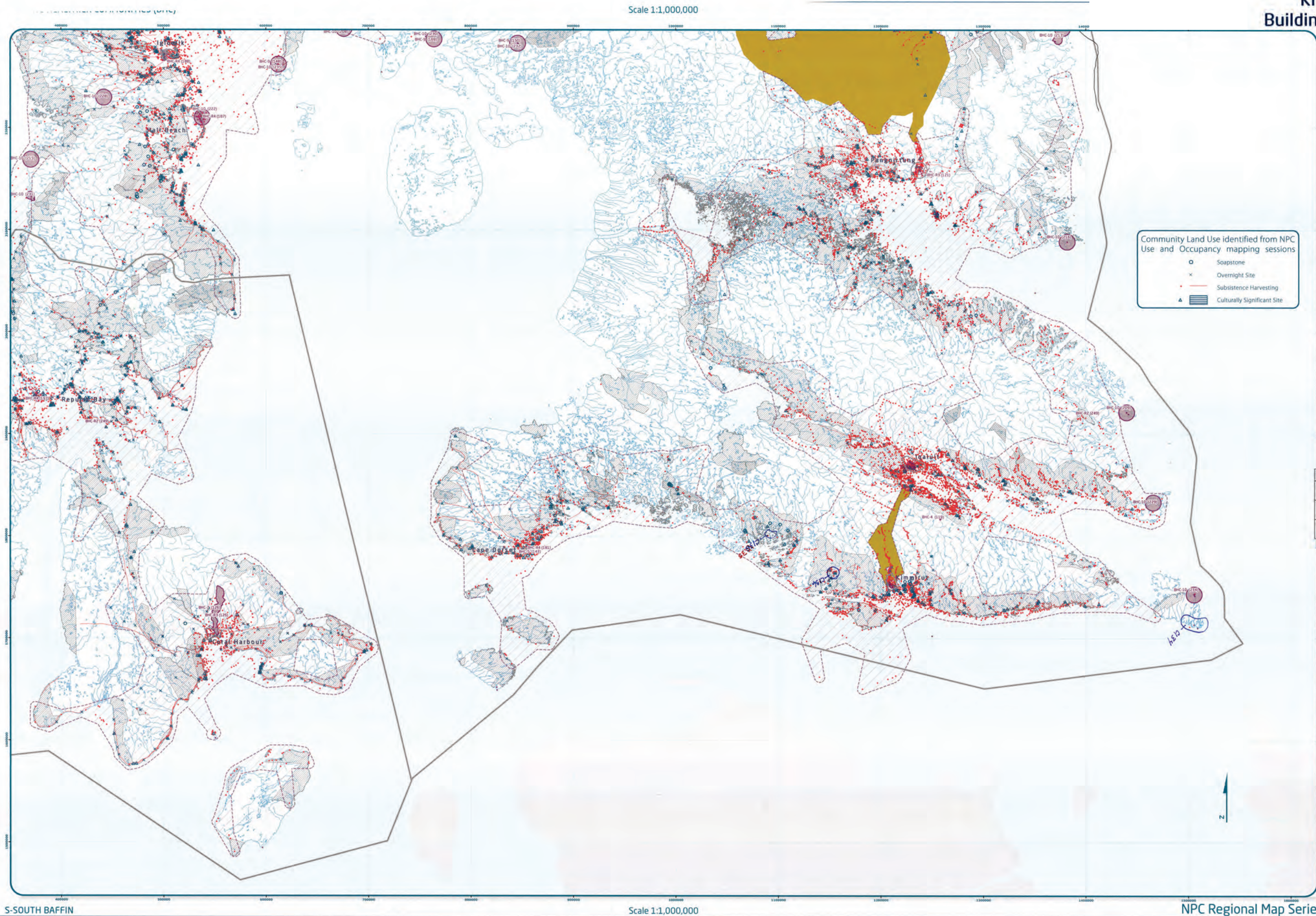
Signature of Mapper:

Coordinate System: EPSG 42304 LCC  
Projection: Lambert Conformal Conic  
Datum: North American 1983  
False Easting: 0.0000  
False Northing: 0.0000  
Central Meridian: -95.0000  
Standard Parallel 1: 49.0000  
Standard Parallel 2: 77.0000  
Latitude Of Origin: 49.0000  
Units: Meter

Working Draft Sub-regional map data sources:  
For Land Use Designations and Recommendations sources see draft Nunavut Land Use Plan and background  
material data source documents.  
Hatched created by utilizing Swiss method in Hatched toolbox courtesy of ESR user forum letter bodies  
created by merging of 1:250,000 WTS shapefiles in Nunavut, version 2.0, and selecting all waterbodies over  
50 hectares in size. Land outside of Nunavut, courtesy of Geomatics. Administrative boundaries consist of NPC  
draft regional boundaries, created to reflect Regional Inuit Association jurisdictions, combined with municipal  
boundaries, provided by Natural Resources Canada cadastre data. Inuit Owned Lands courtesy of Nunavut  
Territory Incorporated. Territorial parks from the Government of Nunavut, National Parks from Parks Canada.  
Data for areas within municipal boundaries obtained from Natural Resources Canada cadastre data.  
This map is to be used for reference purposes only by the NPC.  
Any further use of this map or data therein must be authorized by contacting the Nunavut Planning  
Commission at: (867) 963-4625 or email: info@npc.nunavut.ca  
Friday, January 04, 2013



# Kimmirut - Group 1 Results Building Healthier Communities



Designations	Permitted Uses	Prohibited Uses
BHC-1	Roads, Railways, Utilities and Corridors	
BHC-2	Roads, Railways, Utilities and Corridors	
BHC-3	All uses except those Prohibited	Mining
BHC-4	Hydro electrical and related infrastructure	
BHC-5	Tourism, Recreation and Research, Municipal Services	
BHC-6	Municipal Services	All Other Uses
BHC-7	Municipal Services	
BHC-8	Remediation and Reclamation Activities	All Other Uses
BHC-9	Remediation and Reclamation Activities, S&D Operations and Activities	All Other Uses
BHC-10	S&D Operations and Activities	All Other Uses

**BHC Recommendation**

**Reference Table for Recommendations**

- BHC-11: Project Proposals located in the traditional area of interest should take into account impacts on the cultural value of the area.
- BHC-12: Project Proposals located in areas of traditional land use should take into account impacts on the cultural value of the area.
- BHC-13: Project Proposals located in a community water supply watershed should take into account impacts on the quality and quantity of community drinking water.
- BHC-14: Project Proposals located in a municipal Aerodrome should take into account impacts on aerodrome safety.

Code	Comments
CI34	This area needs to be cleaned up. There are a lot of old barrels from past exploration.
CI35	Not sure if this area is still contaminated. There are a lot of barrels left here.
CI36	Old mining site and exploration. Area needs to be cleaned up.

Kimmiut Planning Commission  
Community Consultation Form  
Land Use Mapping Section

Community:  
Location:  
Region:  
Date:  
Community Plan:  
Map #:

Signatures of the Community signatories as per section 10 of the Land Use Mapping Act:

1.	_____	16.	_____
2.	_____	17.	_____
3.	_____	18.	_____
4.	_____	19.	_____
5.	_____	20.	_____
6.	_____	21.	_____
7.	_____	22.	_____
8.	_____	23.	_____
9.	_____	24.	_____
10.	_____	25.	_____
11.	_____	26.	_____
12.	_____	27.	_____
13.	_____	28.	_____
14.	_____	29.	_____
15.	_____	30.	_____

Signature of Mapper: \_\_\_\_\_



Coordinate System: EPSG:4326 UTM  
Projection: Lambert Conformal Conic  
Datum: North American 1983  
False Easting: 0.0000  
False Northing: 0.0000  
Central Meridian: -95.0000  
Standard Parallel 1: 49.0000  
Standard Parallel 2: 77.0000  
Latitude Of Origin: 49.0000  
Units: Meter

For Land Use Designations and Recommendations sources see draft Nunavut Land Use Plan and background material data source documents.  
Map created by utilizing Survey method in Heliobase toolset courtesy of ESRU user forums. Water bodies created by merging all 1:250,000 scale maps in Heliobase - version 2.0, and selecting all waterbodies over 50 hectares in size. Land outside of Nunavut, courtesy of Geoparc. Administrative boundaries consist of NPC draft regional boundaries, created to reflect Regional Inuit Association jurisdictions, combined with municipal boundaries, provided by Natural Resources Canada cadastre data. Inuit-Owned Lands courtesy of Nunavut Government. Territorial parks from the Government of Nunavut. National Parks from Parks Canada. Data for areas within municipal boundaries obtained from Natural Resources Canada cadastre data.  
This map is to be used for reference purposes only by the NPC.  
Any further use of this map or data therein must be authorized by contacting the Nunavut Planning Commission at (867)983-4625 or email [nunavutplanning@nvc.ca](mailto:nunavutplanning@nvc.ca)  
Friday, January 04, 2013



The map shows the province of Nunavut, Canada. Major cities labeled include Repulse, Cambridge Bay, Rankin Inlet, Tuktoyaktuk, and Inuvik. A red rectangle is drawn around the area containing Repulse and Cambridge Bay. The map includes a scale bar (0 to 200 km) and a north arrow.



Designations	Permitted Uses	Prohibited Uses
BR-C-1	Roads, Railways, Utilities and Corridors	
BR-C-2	Roads, Railways, Utilities and Corridors	
BR-C-3	All uses except those Prohibited	Mining
BR-C-4	Hydro electrical and related infrastructure	
BR-C-5	Tourism, Recreation and Research, Municipal Services	
BR-C-6	Municipal Services	All Other Uses
BR-C-7	Municipal Services	
BR-C-8	Remediation and Reclamation Activities	All Other Uses
BR-C-9	Remediation and Reclamation Activities, O&G Operations and Activities	All Other Uses
BR-C-10	O&G Operations and Activities	All Other Uses

BHC Recommendation	
Reference Table for Recommendations	
BHC-R1	Project Proposals located in the Hixkatee River Area of Interest should take into account impacts on the cultural value of the area.
BHC-R2	Project Proposals located in areas of traditional land use should take into account impacts on the cultural value of the area.
BHC-R3	Project Proposals located in a community water supply watershed should take into account impacts on the quality and quantity of community drinking water.
BHC-R4	Project Proposals located in a municipal Aerodrome should take into account impacts on aerodrome safety.

Code	Comments
CI9	Popular hunting ground (marine and land animals).
CI10	Drinking water and camping
CI11	Camping and drinking water from rivers and icebergs


**Muscular Planning Committee  
Community Consultation Form  
(and Our Missing Member)**

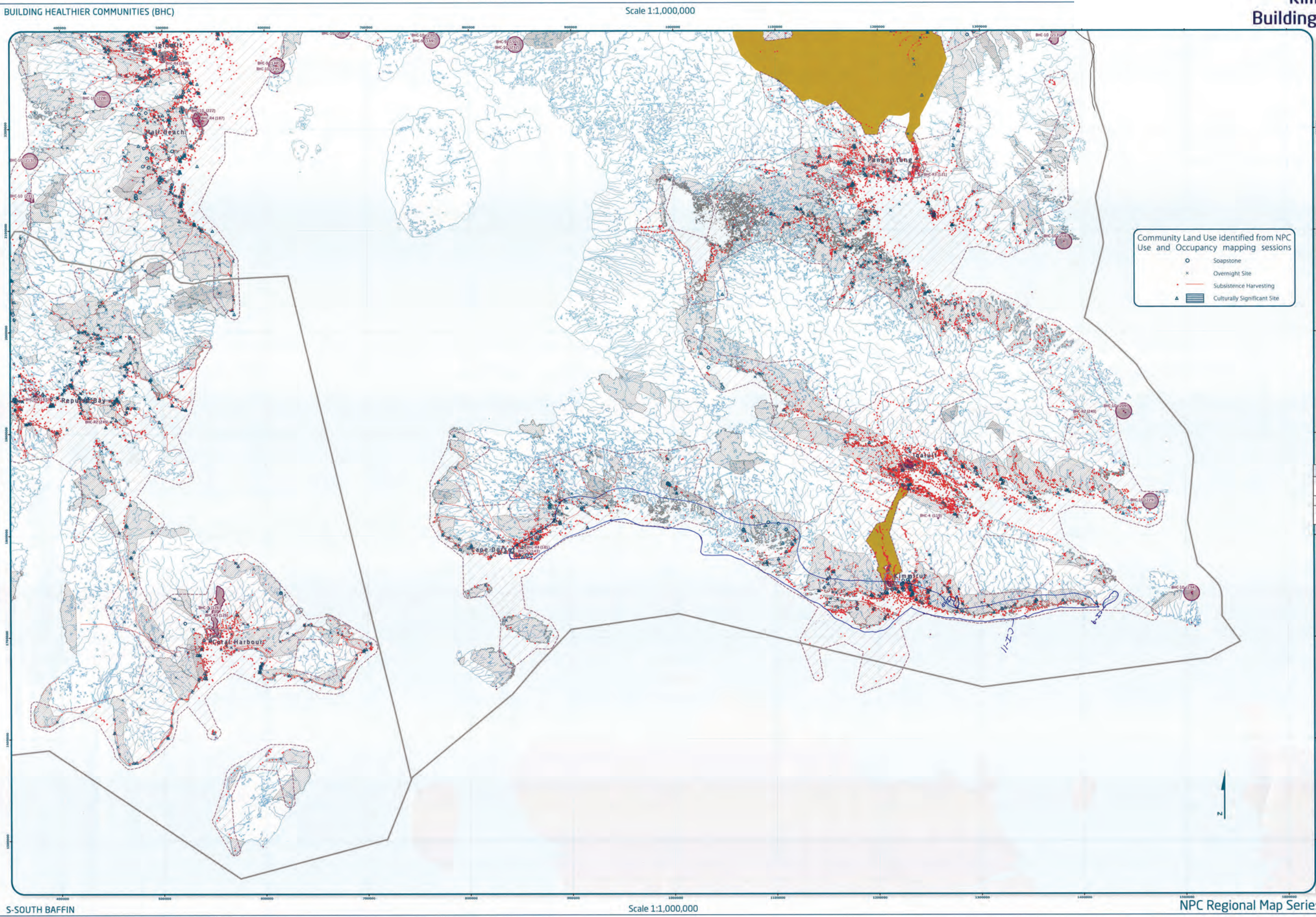
---

**Community:** \_\_\_\_\_  
**Location:** \_\_\_\_\_  
**Region:** \_\_\_\_\_  
**Date:** \_\_\_\_\_  
**Community #/stet**: \_\_\_\_\_  
**Map #**: \_\_\_\_\_

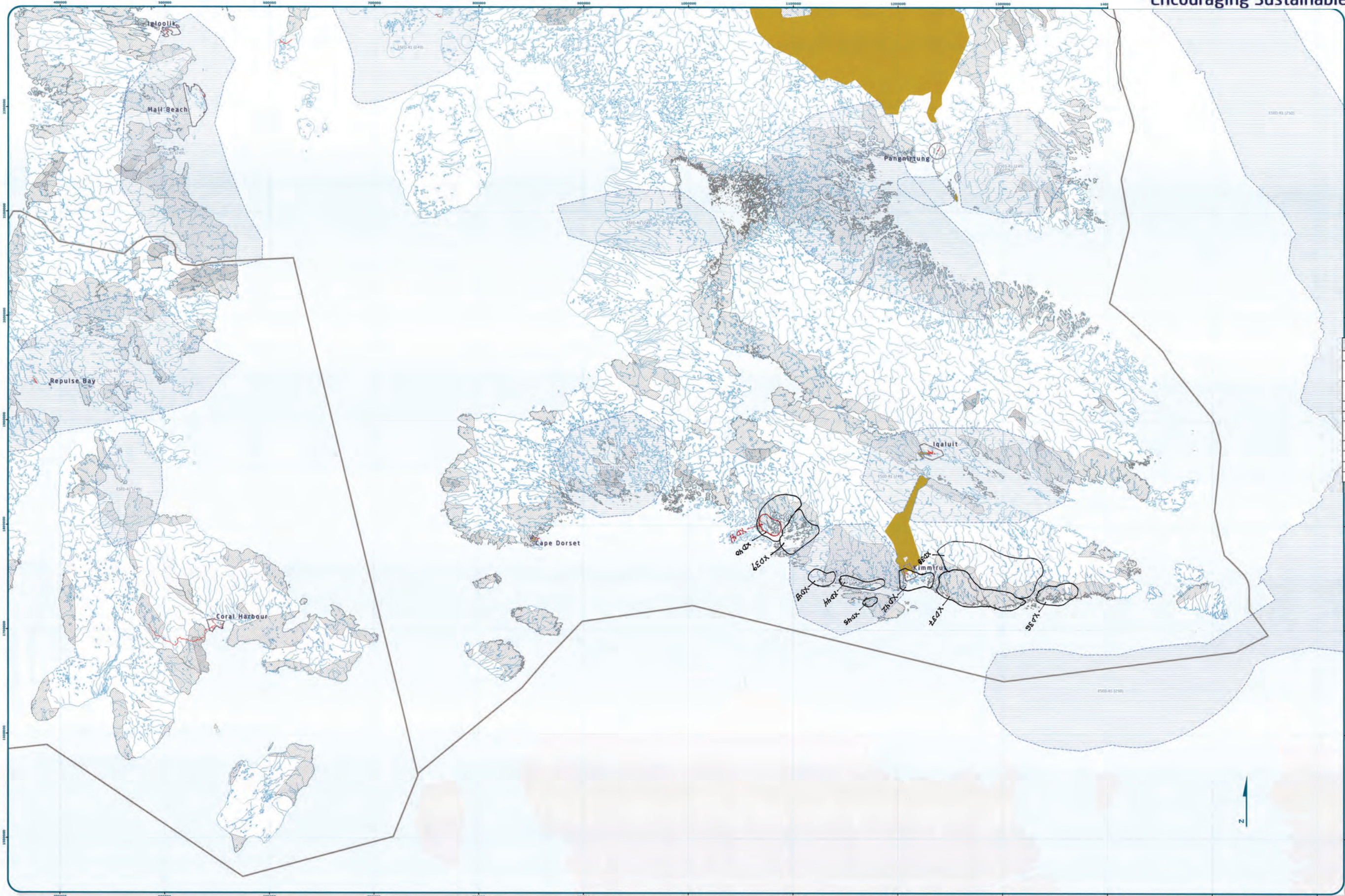
**Signatures of the Community signatory as permission form to conduct mapping session as informants.**

1.	_____	16.	_____
2.	_____	17.	_____
3.	_____	18.	_____
4.	_____	19.	_____
5.	_____	20.	_____
6.	_____	21.	_____
7.	_____	22.	_____
8.	_____	23.	_____
9.	_____	24.	_____
10.	_____	25.	_____
11.	_____	26.	_____
12.	_____	27.	_____
13.	_____	28.	_____
14.	_____	29.	_____
15.	_____	30.	_____

**Signature of Mapper:** \_\_\_\_\_

[illegible]





Designations	Permitted Uses	Prohibited Uses
<b>EXIST</b>	Existing, Remediation and Reclamation Activities, Forest, Fisheries, Lands and Corridors	
<b>EXCL</b>	Oil and Gas, Remediation and Reclamation Activities	
<b>EXED</b>	Encouraging Sustainable Economic Development	
<b>EXED</b>	Reference Table for Recommendations	

Code	Comments
XD36	Study done in these areas for fisheries
XD37	Study done in these areas for potential fishery
XD38	Caribou. Thos area has potential for sports hunting maybe.
XD39	Site studied for fish
XD40	Potential for fisheries
XD41	Polar bear hunting potential for sports hunting.
XD42	Serpentine stone quarry
XD43	Marble stone quarry
XD44	Serpentine stone quarry
XD45	Serpentine stone.

Approved Planning Commission  
Community Planning Commission  
Local Use Mapping Series

Community:  
Location:  
Region:  
Date:  
Community Map:  
Map #

Signatures of the Community Agency in permission  
to conduct mapping session as follows:

1.	16.
2.	17.
3.	18.
4.	19.
5.	20.
6.	21.
7.	22.
8.	23.
9.	24.
10.	25.
11.	26.
12.	27.
13.	28.
14.	29.
15.	30.

Signature of Mapper:




Coordinate System: EPSG:42304 LCC  
Projection: Lambert Conformal Conic  
Datum: North American 1983  
False Easting: 0.0000  
False Northing: 0.0000  
Central Meridian: -95.0000  
Standard Parallel 1: 49.0000  
Standard Parallel 2: 77.0000  
Latitude Of Origin: 49.0000  
Units: Meter

Working Draft Sub-regional map data sources:  
For Land Use Designations and Recommendations sources see draft Nunavut Land Use Plan and background material data source documents.  
Hillshade created by utilizing SAGA method in Hillshade toolset courtesy of ESRI user forums. Water bodies created by merging all 1:250,000 scale maps in Nunavut, version 2.0, and selecting all waterbodies over 50 hectares in size. Land outside of Nunavut, courtesy of Geogratis. Administrative boundaries consist of NPC draft regional boundaries, created to reflect regional Inuit Association jurisdictions, combined with municipal boundaries, provided by Natural Resources Canada cadastrol data. Inuit Owned Lands courtesy of Nunavut Territories Incorporated. Territorial parks from the Government of Nunavut. National Parks from Parks Canada. Data for areas within municipal boundaries obtained from Natural Resources Canada cadastrol data.

This map is to be used for reference purposes only by the NPC.  
Any further use of this map or data herein must be authorized by contacting the Nunavut Planning Commission at (867) 983-4625 or email [ncp@npc.nunavut.ca](mailto:ncp@npc.nunavut.ca)  
File: Jan 04, 2013





Designations	Permitted Uses	Prohibited Uses
SE-1	Shrimp, Remediation and Reclamation Activities, Roads, Railways, Utilities and Canals	
SE-2	Oil and gas, Remediation and Reclamation Activities	
 <b>SE-3</b> <i>Used Recommendation</i>		
<b>Reference Table for Recommendations</b>		
SE-1	Project responses occurred in an area of <i>Continuous Refined</i> potential should not have a direct impact that will <i>reduce the potential of the area</i> .	

Code	Comments
XD12	Not enough Arctic char in this area (DFO is wrong)
XD13	Researched and sampled for commercial fishing
XD14	Researched and sampled for commercial fishing
XD15	Researched and sampled for commercial fishing
XD16	Soapstone – encourage usage for carving
XD17	Soapstone – encourage usage for carving
XD18	Soapstone – encourage usage for carving

This image shows a single sheet of white paper with horizontal blue lines, typical of notebook paper. The lines are evenly spaced and run across the width of the page. There is no handwriting or other markings on the paper.

Removal Planning Commission  
Community Consultation Year  
Level Use Mapping Session

Community: \_\_\_\_\_  
Location: \_\_\_\_\_  
Region: \_\_\_\_\_  
Date: \_\_\_\_\_  
Community #/NA: \_\_\_\_\_

**Map 4**

**Signatures of the Community signify its permission to conduct mapping activities on landmasses.**

1.	16
2.	17
3.	18
4.	19
5.	20
6.	21
7.	22
8.	23
9.	24
10.	25
11.	26
12.	27
13.	28
14.	29
15.	30

Signature of Mapper: \_\_\_\_\_

CONFIDENTIALITY STAMP




 Coordinate System: EPSG 42304 LCC  
 Projection: Lambert Conformal Conic  
 Datum: North American 1983  
 False Easting: 0.0000  
 False Northing: 0.0000  
 Central Meridian: -95.0000  
 Standard Parallel 1: 49.0000  
 Standard Parallel 2: 77.0000  
 Latitude Of Origin: 49.0000  
 Units: Meter

Working Draft-Sub-regional input data sources

For Land Use Designations and Recommendations sources used for Runaway Land Use Plan and background material data source documents

Hillside created by utilizing Swiss method in Hillshade toolbar controls in ESRI user friendly ArcView 3.2A software. Data was created by merging all 1:250,000 WTRB topographic maps (runaway, version 2.0, 2.1, and selecting all watersheds over 1000 acres in size) and the National Wetlands Inventory (NWI) data. The NWI data was obtained from the National Wetlands Inventory (NWI) data regional boundaries, selected in Regional Input Association jurisdictions, combined with municipal boundaries, provided by Natural Resources Canada (NRC) and the National Wetlands Inventory (NWI) data. The NWI data was provided by Natural Resources Canada (NRC) and the National Wetlands Inventory (NWI) data.

Topographic Information: Territorial parks from the Government of Nunavut, National Parks from Parks Canada

Data for areas within municipal boundaries obtained from Natural Resources Canada (NRC) data (cultural data)

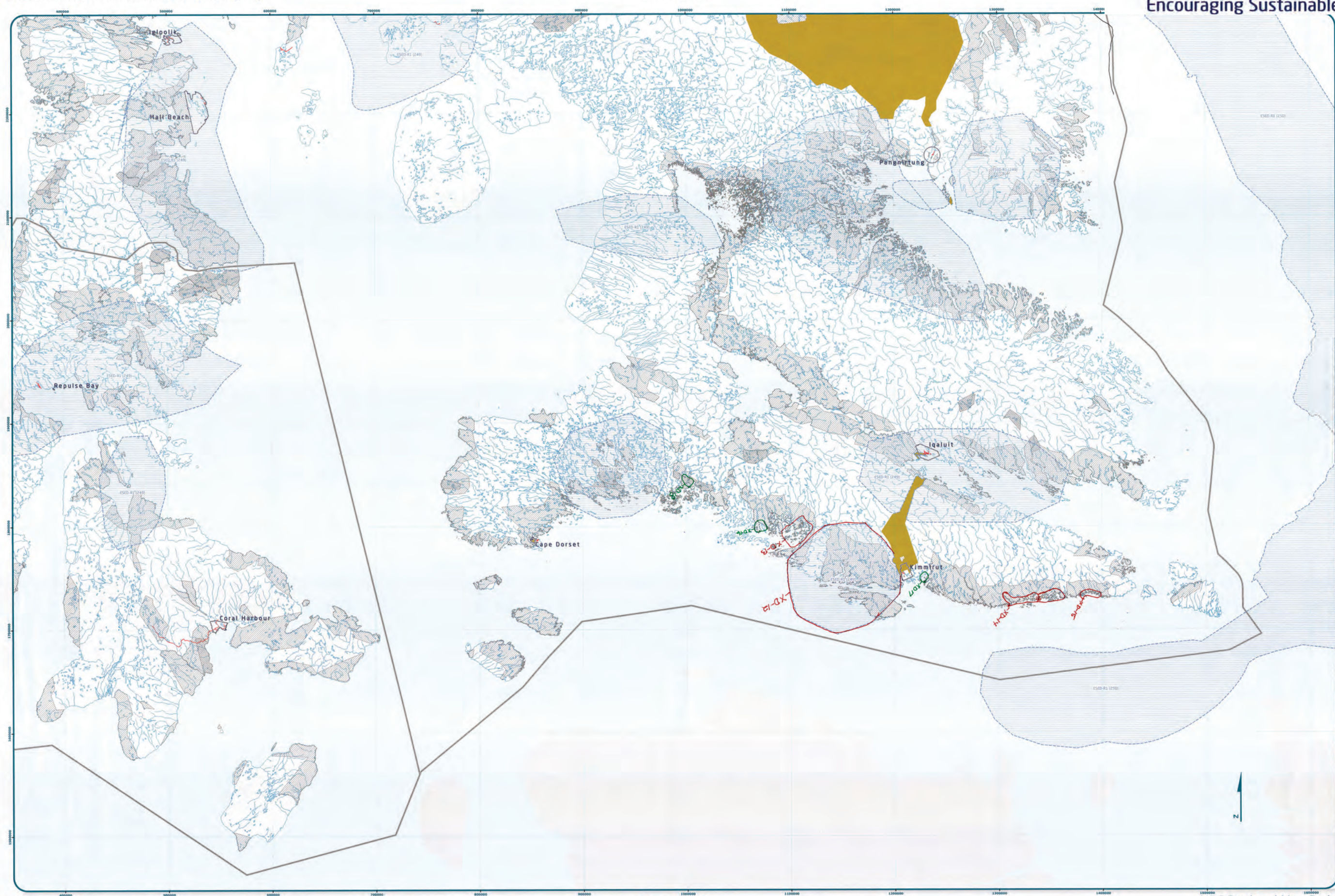
This map is to be used for reference purposes only by the NRC

Any further use of this map or data therein must be approved by contacting the Nunavut Planning Commission at: (867)783-4625 or e-mail: [nrc@nunavut.ca](mailto:nrc@nunavut.ca)

Friday, January 24, 2014



Scale 1:1,000,000



S-SOUTH BAFFIN

Scale 1:1,000,000

## NPC Regional Map Series



Kimmirut - Group 1 Results  
Mixed Use

MIXED USE (MU)

Scale 1:1,000,000



S-SOUTH BAFFIN

Scale 1:1,000,000

NPC Regional Map Series



Designations	Permitted Uses	Prohibited Uses
All Uses	All Uses	All Uses

Code	Comments
MU46	Migration routes for sea mammals. Beluga whale migration. All marine mammals, seals walrus, polar bear migrate along here
MU47	Polar bears, following marine mammals. Walrus, ring seal, coast line is abundant with polar bears.
MU48	Caribou hunting, calving area
MU49	Hunting at flow edge for beluga whales, seals, walrus
MU50	Historical travel routes
MU51	Historical travel routes
MU52	Historical travel routes
MU53	Historical travel routes
MU54	Historical travel routes

Community: \_\_\_\_\_  
Location: \_\_\_\_\_  
Region: \_\_\_\_\_  
Community Plan: \_\_\_\_\_  
Map #: \_\_\_\_\_

Signatures of the Community signify in permission to conduct mapping session as indicated.

1. _____	16. _____
2. _____	17. _____
3. _____	18. _____
4. _____	19. _____
5. _____	20. _____
6. _____	21. _____
7. _____	22. _____
8. _____	23. _____
9. _____	24. _____
10. _____	25. _____
11. _____	26. _____
12. _____	27. _____
13. _____	28. _____
14. _____	29. _____
15. _____	30. _____

Signature of Mapper: \_\_\_\_\_

Community: \_\_\_\_\_  
Location: \_\_\_\_\_  
Region: \_\_\_\_\_  
Community Plan: \_\_\_\_\_  
Map #: \_\_\_\_\_

Signatures of the Community signify in permission to conduct mapping session as indicated.

1. _____	16. _____
2. _____	17. _____
3. _____	18. _____
4. _____	19. _____
5. _____	20. _____
6. _____	21. _____
7. _____	22. _____
8. _____	23. _____
9. _____	24. _____
10. _____	25. _____
11. _____	26. _____
12. _____	27. _____
13. _____	28. _____
14. _____	29. _____
15. _____	30. _____

Signature of Mapper: \_\_\_\_\_

Coordinate System: EPSG 43264 LCC  
Projection: Lambert Conformal Conic  
Datum: North American 1983  
False Easting: 0.0000  
False Northing: 0.0000  
Central Meridian: -95.0000  
Standard Parallel 1: 49.0000  
Standard Parallel 2: 77.0000  
Latitude Of Origin: 49.0000  
Units: Meter

Working Draft Sub-regional map data sources:  
For Land Use Designations and Recommendations sources see draft Nunavut Land Use Plan and background material data source documents.  
Hillshade created by utilizing SRTM30 PLUS data in ArcGIS 10.2.2.0 and selecting all waterbodies over 50 hectares in size. Land outside of Nunavut, courtesy of Geogratis. Administrative boundaries consist of NPC draft regional boundaries, created to reflect Regional Inuit Association jurisdictions, combined with municipal boundaries, provided by Natural Resources Canada cadastral data. Inuit Owned Lands courtesy of Nunavut Tunngavik Incorporated. Territorial parks from the Government of Nunavut. National Parks from Parks Canada. Data for areas within municipal boundaries obtained from Natural Resources Canada cadastral data.  
This map is to be used for reference purposes only by the NPC.  
Any further use of this map or data therein must be authorized by contacting the Nunavut Planning Commission at (867) 969-4625 or email [npc@nunavut.ca](mailto:npc@nunavut.ca) Friday, January 04, 2013





Code	Comments
MU19	Protection to prevent mining
MU20	Protection to prevent mining
MU21	Protection to prevent mining "I don't care about IOL mineral potential because we never see money from it. I care about protecting the land for future use for my children."

[illegible]

Session of Planning Committee  
Community Identification Form  
Level II Mapping Section

Community: \_\_\_\_\_  
Location: \_\_\_\_\_  
Region: \_\_\_\_\_  
Date: \_\_\_\_\_  
Community PKW: \_\_\_\_\_  
Map # \_\_\_\_\_

Signatures of the Community signify its permission  
form to conduct mapping sessions as follows:

1. Abdullah Akululu 16.
2. Leahyeyi Abanda 17.
3. Almon Abanda 18.
4. Abdullahi M. Gadi 19.
5. \_\_\_\_\_ 20.
6. Abdullahi M. Gadi 21.
7. Abdullahi M. Gadi 22.
8. Abdullahi M. Gadi 23.
9. Abdullahi M. Gadi 24.
10. Abdullahi M. Gadi 25.
11. Abdullahi M. Gadi 26.
12. Abdullahi M. Gadi 27.
13. \_\_\_\_\_ 28.
14. \_\_\_\_\_ 29.
15. \_\_\_\_\_ 30.

Signature of Mapper \_\_\_\_\_




 Coordinate System: EPSG 42304 LCC  
 Projection: Lambert Conformal Conic  
 Datum: North American 1983  
 False Easting: 0.0000  
 False Northing: 0.0000  
 Central Meridian: -95.0000  
 Standard Parallel 1: 49.0000  
 Standard Parallel 2: 77.0000  
 Latitude Of origin: 49.0000  
 Units: Meter

For Land Use Designations and Recommendations sources used for this Nunavut Land Use Plan and background material source documents.

Hillshade created by utilizing 50m metrid in Hillshade toolboxes from Esri user forum water bodies created by merging all 1:500,000 WTS shapefiles in Nunavut, version 2.0, and selecting all waterbodies in 50 hectares in size. Land outside of Nunavut, courtesy of Geographic Administrative boundaries created of NRC Canada, 2013. Water bodies, created by Esri Regional Information Systems, 2013. Land cover, courtesy of Natural Resources Canada Canada geospatial data. Inuit Owner Lands courtesy of Nunavut Government, 2013. Parks from the Government of Nunavut, National Parks from Parks Canada Nunavut website, 2013. Municipal boundaries obtained from Esri, 2013. Land cover, courtesy of Natural Resources Canada for areas within municipal boundaries.

This map is to be used for reference purposes only by the NRC. It is not to be used for any other purpose without the written permission of the Natural Resources Commission at: (867) 963-4625 or email [inquiries@nrc.gc.ca](mailto:inquiries@nrc.gc.ca)

Friday, January 04, 2013



## Appendix 5: Wrap Up Session

A small group of participants returned to identify additional important areas during the wrap up session.





Legend:

- Roads
- Established Parks (Land Use Plan does not apply)
- Inuit Owned Lands (Surface)
- Inuit Owned Lands (Sub-surface)
- Administrative Boundary

Designations	Permitted Uses	Prohibited Uses
MU	All Uses	

Code	Comments
MU1	Protect area for hunting and fishing. The area has oil in the ground.
MU2	Hunting ground. Lots of people go here. Must be protected for fishing.
MU3	Lots of fishing with gillnets
MU4	area for protection for fishing grounds and marine mammals
MU5	area for protection for fishing grounds
MU6	Migration for wolves, and feeding

[illegible]

Nonverbal P  
Community  
Land Use

Community: \_\_\_\_\_  
 Location: \_\_\_\_\_  
 Region: \_\_\_\_\_  
 Date: \_\_\_\_\_  
 Community PIN# \_\_\_\_\_  
 MGR# \_\_\_\_\_

**Signatures of the Community** signify as permission form to conduct machine session as informants.

1. MAFIA MAKASHED

2. \_\_\_\_\_

3. \_\_\_\_\_

4. \_\_\_\_\_

5. \_\_\_\_\_

6. \_\_\_\_\_

7. \_\_\_\_\_

8. \_\_\_\_\_

9. \_\_\_\_\_

10. \_\_\_\_\_

11. \_\_\_\_\_

12. \_\_\_\_\_

13. \_\_\_\_\_

14. \_\_\_\_\_

15. \_\_\_\_\_

### Situation of Women

Signature of Shopper: \_\_\_\_\_

CONFIDENTIALITY STAMP

© 2011 Pearson Education, Inc. All rights reserved. No part of this publication may be reproduced, stored in a retrieval system, or transmitted, in any form or by any means, electronic, mechanical, photocopying, recording, or by any information storage or retrieval system, without prior written permission from the publisher.



۱۵  
 Numarunni Pannayit  
 Numarunni Planning Commission

Commission d'arrondissement de Nantes

For Land Use Designations and Recommendations

Hillshade created by utilizing Swiss method in H  
created by merging all 1-250,000 WTB shapefiles in  
50 hectares in size. Land outside of Nunavut, coun

draft regional boundaries, created to reflect Regional boundaries, provided by Natural Resources Canada. Tunngavik Incorporated. Territorial parks from the

Any further use of this map or data there

Commissio



## Appendix 6: Follow-up Meeting

The NPC returned to the community to review a draft version of this report with the Hamlet Council, Hunters and Trappers Organization, and Community Lands and Resource Committee. The meeting included:

- A presentation of a draft version of this report
- An overview of the mapped information that was recorded for each topic:
  - Protecting and Sustaining the Environment
  - Encouraging Conservation Planning
  - Building Healthier Communities
  - Encouraging Sustainable Economic Development
  - Mixed Use
- General discussion and comments including:
  - Timelines for completion
  - Opportunities to provide additional comments
  - Interest in seeing how a revised plan will manage mining in the area (lots of gems nearby)
  - Discussion about how the community can start using the information that was collected now