

Summary of Community Meetings on the  
Draft Nunavut Land Use Plan  
CHESTERFIELD INLET  
November 21-22, 2013



Revised - January 2014



# Contents

Introduction.....	3	Appendix 1: Open House.....	17
1.1 Context .....	3	Appendix 2: Elected Officials Meeting.....	18
1.2 Purpose.....	3	Appendix 3: Questions and Answers.....	19
1.3 Methodology.....	3	Appendix 4: Community Workshop Scanned Maps.....	20
1.4 Public Awareness .....	3	Appendix 5: Follow-up Meeting.....	30
1.5 Community Population and Participation.....	3		
 Protecting and Sustaining the Environment .....	4		
2.1 Areas presented to participants.....	4		
2.2 Areas identified by participants .....	4		
2.3 Areas of importance to Protecting and Sustaining the Environment..	4		
 Encouraging Conservation Planning.....	6		
3.1 Areas presented to participants .....	6		
3.2 Areas identified by participants .....	6		
3.3 Areas of importance to Encouraging Conservation Planning .....	6		
 Building Healthier Communities .....	8		
4.1 Areas presented to participants.....	8		
4.2 Areas identified by participants .....	8		
4.3 Areas of importance to Building Healthier Communities .....	8		
 Encouraging Sustainable Economic Development.....	10		
5.1 Areas presented to participants.....	10		
5.2 Areas identified by participants .....	10		
5.3 Areas of importance to Encouraging Sustainable Economic Development .....	10		
 Mixed Use .....	12		
6.1 Areas identified in the Draft Plan .....	12		
6.2 Areas identified by participants .....	12		
 Overlapping Goals .....	15		
7.1 Areas identified for multiple goals .....	15		

# Chapter 1: Introduction

## 1.1 Context

The Nunavut Planning Commission (NPC) is preparing a land use plan to guide and direct resource use and development in the Nunavut Settlement Area (NSA). As part of its efforts, the NPC is facilitating discussions in each Nunavut community on land use and resource management issues. Information that is obtained from these discussions will be used to inform decisions regarding the further development of the Nunavut Land Use Plan (NLUP).

## 1.2 Purpose

This report presents information obtained during the NPC's visit to the community of Chesterfield Inlet. The purpose of the report is to inform decisions regarding the further development of the NLUP, ensuring that the plan reflects the priorities and values of residents.

It is important to note that the information contained in the Community Report will be considered in conjunction with all other feedback when revising the DNLUP.

## 1.3 Methodology

Information was presented to and received from participants in Chesterfield Inlet in accordance with the Nunavut Planning Commission's Community Engagement Strategy (Engagement Strategy). The Engagement Strategy provides for the following methods for presenting and receiving information;

- **Open house;** information contained in the Draft Nunavut Land Use Plan (DNLUP) was presented on 7 multi lingual large format poster boards. Participants were encouraged to review the posters, ask questions and provide feedback. Comments and questions were recorded by NPC staff and are contained in Appendix 1.
- **Elected Officials Meeting;** The NPC Chairperson and NPC staff met with senior and elected officials in the community. The development process for the DNLUP, its content and next steps were presented.

Comments and questions were recorded during the session and are contained in Appendix 2.

- **Public Workshop;** A formal presentation of the Draft Plan content was provided to participants, including a slide overview of its content. Following the presentation, questions and comments were received from participants. The questions, comments and responses are contained in Appendix 3.

A mapping session followed the presentation of the Draft Plan. The mapping session involved discussions regarding the topics presented in the DNLUP and encouraged participants to identify additional areas and issues important for inclusion in a NLUP. Information received during this session was recorded by NPC staff and is included in Appendix 4.

- **Wrap Up Session;** Staff was available to discuss the areas identified during the mapping and identify any additional issues or areas of interest.

Areas that participants identified during mapping sessions as important to a particular goal have, in the majority of cases, been included in this report as they were recorded. In instances where participants identified an area that was better suited to another goal, the area has been reclassified to the more suitable goal and has been verified as appropriate to do so by the Community.

A follow-up meeting was held on January 15, 2014 to review a draft version of this report with the Hamlet Council, Hunters and Trappers Organization, and Community Lands and Resource Committee. A summary of this meeting is included in Appendix 5.

## 1.4 Public Awareness

The NPC raised public awareness regarding its visit to Chesterfield Inlet in accordance with the Engagement Strategy.

The DNLUP and supporting materials were mailed to the Mayor and Council of Chesterfield Inlet, and the Hunters and Trappers Organization (HTO) in September 2012. In addition, letters of invitation were sent to the Chesterfield Inlet Mayor

and Council and HTO in advance of the NPC's visit to advise of the meetings and to encourage participation. Follow up phone calls were also made.

Public notice of the various events was provided in the following ways:

- **Nunatsiaq News and Nunavut News/North;** notice of community meetings were posted in both newspapers a minimum of 45 days in advance.
- **Co-op cable TV;** notice of community meetings was run a minimum of 45 days in advance for one week and run again for no less than 14 days before the meetings.
- **Community radio;** notices were read by the hosts and a live interview with the Commission Chairperson was conducted.
- **Community bulletin boards;** notices were posted on bulletin boards around the community 45 days and again 14 days in advance of the meetings.
- **Community mail drop;** one page flyers that announced the meetings and their purpose were delivered to the post office in each community for all mail boxes that accept unaddressed ad-mail.
- **nunavut.ca;** the schedule of community visits, the Draft Plan, and all supporting information was available on the Commission's website.

## 1.5 Community Population and Participation

Chesterfield Inlet is a community of approximately 315 people (Statistics Canada. 2011 Census). It is located on the northwestern shore of Hudson Bay (see Figure 1).

The Commission visited the community on November 21-22, 2013. All events occurred as scheduled. The sessions were attended as follows;

- **Elected Officials Meeting;** the Mayor and members of the Hamlet Council and HTO attended the elected officials meeting.
- **Open house;** approximately 15 people attended the open house to review the Draft Plan.
- **Public Workshop;** approximately 25 people attended the presentation of the DNLUP and facilitated mapping sessions. Information was recorded in two separate mapping groups.
- **Wrap Up Session;** 0 people attended the wrap up session.

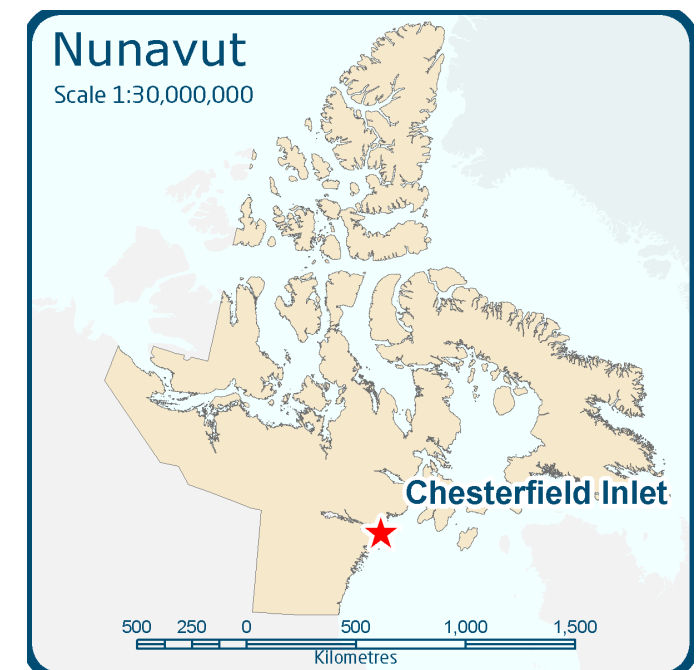


Figure 1. Location of Chesterfield Inlet

# Chapter 2: Protecting and Sustaining the Environment

Protecting and Sustaining the Environment was one of five topics presented to and discussed by participants during the Open House, Elected Officials Meeting, Public Workshop and Wrap up Session, collectively referred to in this document as information sharing and gathering sessions.

## 2.1 Areas presented to participants

During the information sharing and gathering sessions, participants were presented the following areas and issues as important to Protecting and Sustaining the Environment.

- Key bird habitat sites
- Caribou Habitat sites
- Atlantic Cod Lakes
- Cumulative Impacts
- Transboundary considerations
- Climate change

The importance of these issues and areas to Protecting and Sustaining the Environment was not disputed by participants during the information sharing and gathering sessions.

## 2.2 Areas identified by participants

Additional areas and issues were identified by participants as important to Protecting and Sustaining the Environment during the information sharing and gathering sessions. These additional areas are;

- Caribou habitat
- Marine mammal habitat
- Bird habitat
- Fish habitat

## 2.3 Areas of importance to Protecting and Sustaining the Environment

Areas and issues discussed during the information sharing and gathering sessions as important to Protecting and Sustaining the Environment are illustrated on Map 1, including areas identified in the DNLUP and areas identified by the community. Scanned images of the maps on which community feedback was recorded can be found in Appendix 4.

Based on discussions with participants, the NPC understands that:

- The areas identified on Map 1 are considered by the Community to be important to Protecting and Sustaining the Environment.
- In these areas, the community would like the NLUP to encourage activities that support environmental protection and management needs, including wildlife conservation, protection and management.

This feedback will be considered in conjunction with all other feedback when revising the DNLUP.

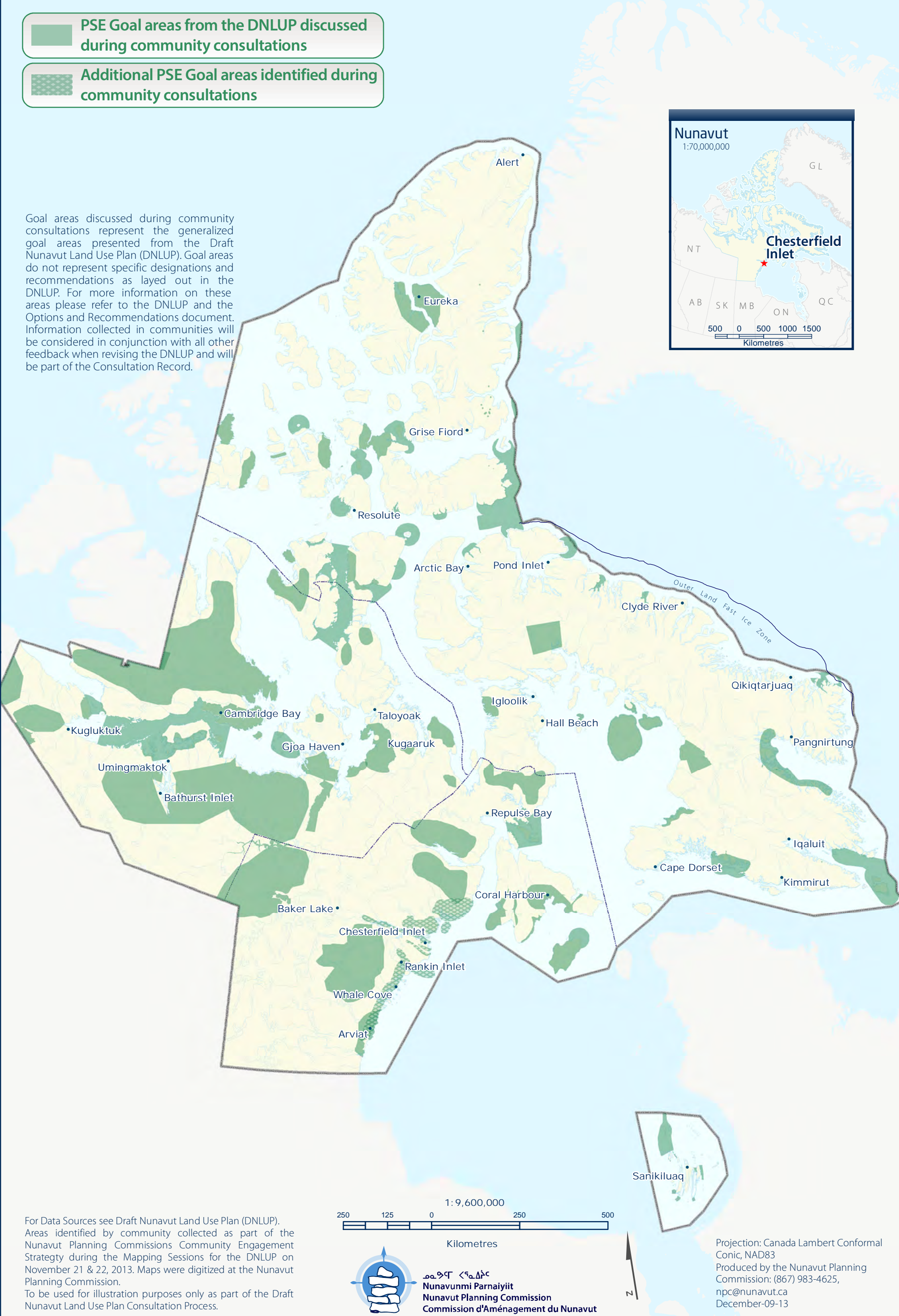




# PROTECTING AND SUSTAINING THE ENVIRONMENT (PSE) CHESTERFIELD INLET • MAP 1

-  PSE Goal areas from the DNLUP discussed during community consultations
-  Additional PSE Goal areas identified during community consultations

Goal areas discussed during community consultations represent the generalized goal areas presented from the Draft Nunavut Land Use Plan (DNLUP). Goal areas do not represent specific designations and recommendations as layed out in the DNLUP. For more information on these areas please refer to the DNLUP and the Options and Recommendations document. Information collected in communities will be considered in conjunction with all other feedback when revising the DNLUP and will be part of the Consultation Record.





## Chapter 3: Encouraging Conservation Planning

Encouraging Conservation Planning was one of five topics presented to and discussed by the participants during the information sharing and gathering sessions.

### 3.1 Areas presented to participants

During the information sharing and gathering sessions, participants were presented the following areas and issues as important to Encouraging Conservation Planning;

- National Parks Awaiting Full Establishment
- Proposed National Parks
- National Marine Conservation Areas
- Thelon Wildlife Sanctuary
- Migratory Bird Sanctuaries
- National Wildlife Areas
- National Historic Sites
- Territorial Historic Sites
- Heritage Rivers

The importance of these issues and areas to Encouraging Conservation Planning was not disputed by participants during the information sharing and gathering sessions.

### 3.2 Areas identified by participants

Additional areas and issues were identified by participants as important to Encouraging Conservation Planning during the information sharing and gathering sessions. These additional areas are.

- Historic sites

### 3.3 Areas of importance to Encouraging Conservation Planning

Areas and issues discussed during the information sharing and gathering sessions as important to Encouraging Conservation Planning are illustrated on Map 2, including areas identified in the DNLUP and areas identified by the community. Scanned images of the maps on which community feedback was recorded can be found in Appendix 4.

Based on discussions with participants, the NPC understands that:

- The areas identified on Map 2 are considered by the Community to be important to Encouraging Conservation Planning.
- In these areas, the community would like the NLUP to encourage activities that support environmental protection and management needs, including wildlife conservation, protection and management.

This feedback will be considered in conjunction with all other feedback when revising the DNLUP.

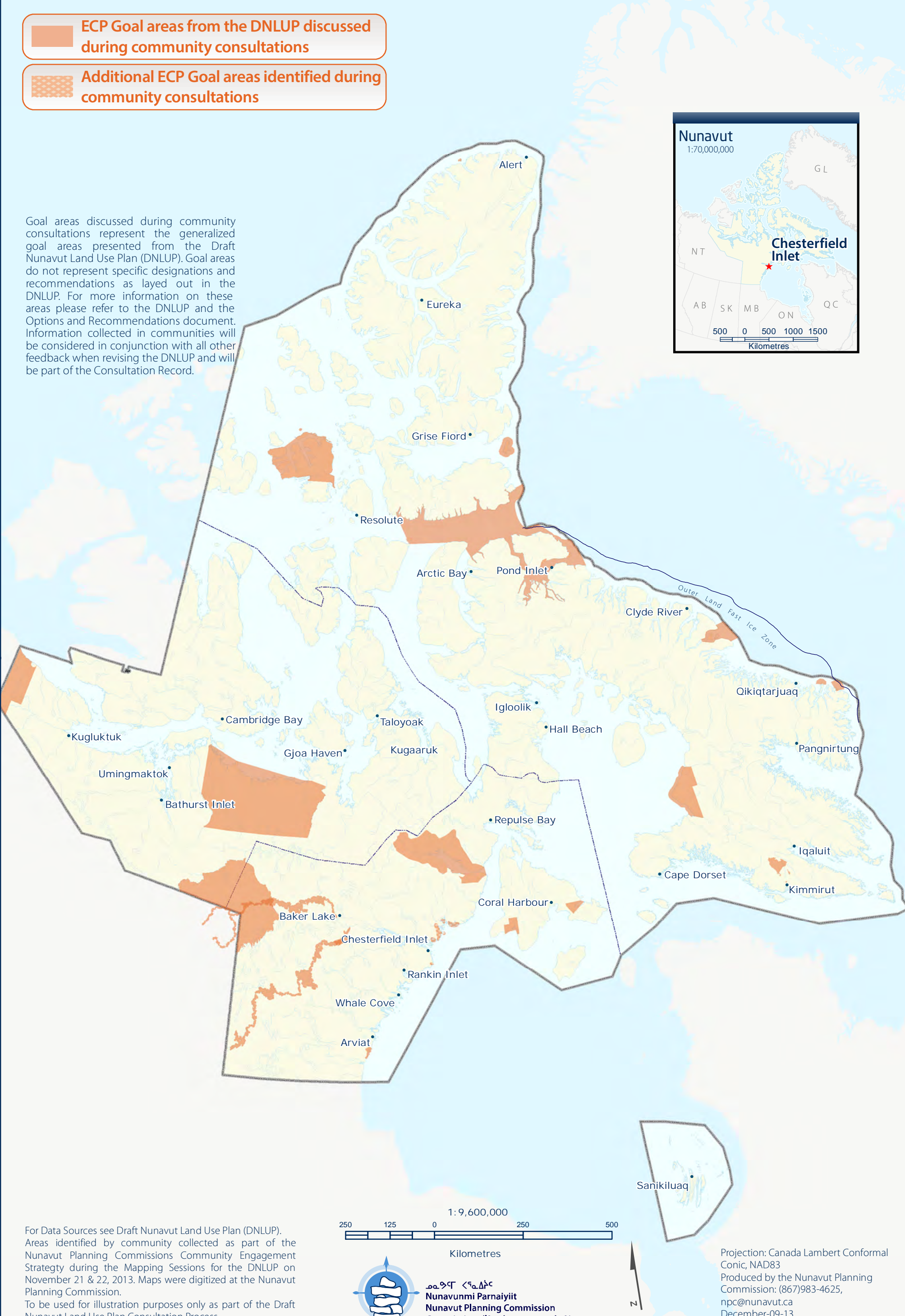




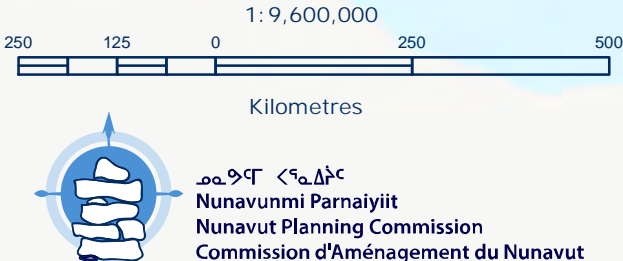
ENCOURAGING CONSERVATION PLANNING (ECP)  
CHESTERFIELD INLET • MAP 2

-  ECP Goal areas from the DNLUP discussed during community consultations
-  Additional ECP Goal areas identified during community consultations

Goal areas discussed during community consultations represent the generalized goal areas presented from the Draft Nunavut Land Use Plan (DNLUP). Goal areas do not represent specific designations and recommendations as layed out in the DNLUP. For more information on these areas please refer to the DNLUP and the Options and Recommendations document. Information collected in communities will be considered in conjunction with all other feedback when revising the DNLUP and will be part of the Consultation Record.



For Data Sources see Draft Nunavut Land Use Plan (DNLUP). Areas identified by community collected as part of the Nunavut Planning Commissions Community Engagement Strategy during the Mapping Sessions for the DNLUP on November 21 & 22, 2013. Maps were digitized at the Nunavut Planning Commission. To be used for illustration purposes only as part of the Draft Nunavut Land Use Plan Consultation Process.



Projection: Canada Lambert Conformal Conic, NAD83  
Produced by the Nunavut Planning Commission: (867)983-4625, npc@nunavut.ca  
December-09-13



# Chapter 4: Building Healthier Communities

Building Healthier Communities was one of five topics presented to and discussed by the participants during the information sharing and gathering sessions.

## 4.1 Areas presented to participants

During the information sharing and gathering sessions, participants were presented the following areas and issues as important to Building Healthier Communities;

- Areas of Community Interest
- Community Land Use
- Transportation Infrastructure
- Unincorporated Communities
- Alternative Energy Sources
- Community drinking water supplies
- Land remediation
- Northern Contaminated Sites Program
- Aerodromes
- Canadian Forces Station
- Northern Warning System sites

The importance of these issues and areas to Building Healthier Communities was not disputed by participants.

## 4.2 Areas identified by participants

Additional areas and issues were identified by participants as important to contributing to the goal of Building Healthier Communities during the information sharing and gathering sessions. These additional areas are;

- Hunting areas

## 4.3 Areas of importance to Building Healthier Communities

Areas and issues discussed during the information sharing and gathering sessions as important to Building Healthier Communities are illustrated on Map 3, including areas identified in the DNLUP and areas identified by the community. Scanned images of the maps on which community feedback was recorded can be found in Appendix 4.

Based on discussions with participants, the NPC understands that:



- The areas identified on Map 3 are considered by the Community to be important to Building Healthier Communities.
- In these areas, the community would like the NLUP to encourage activities that support community needs and cultural priorities.

This feedback will be considered in conjunction with all other feedback when revising the DNLUP.

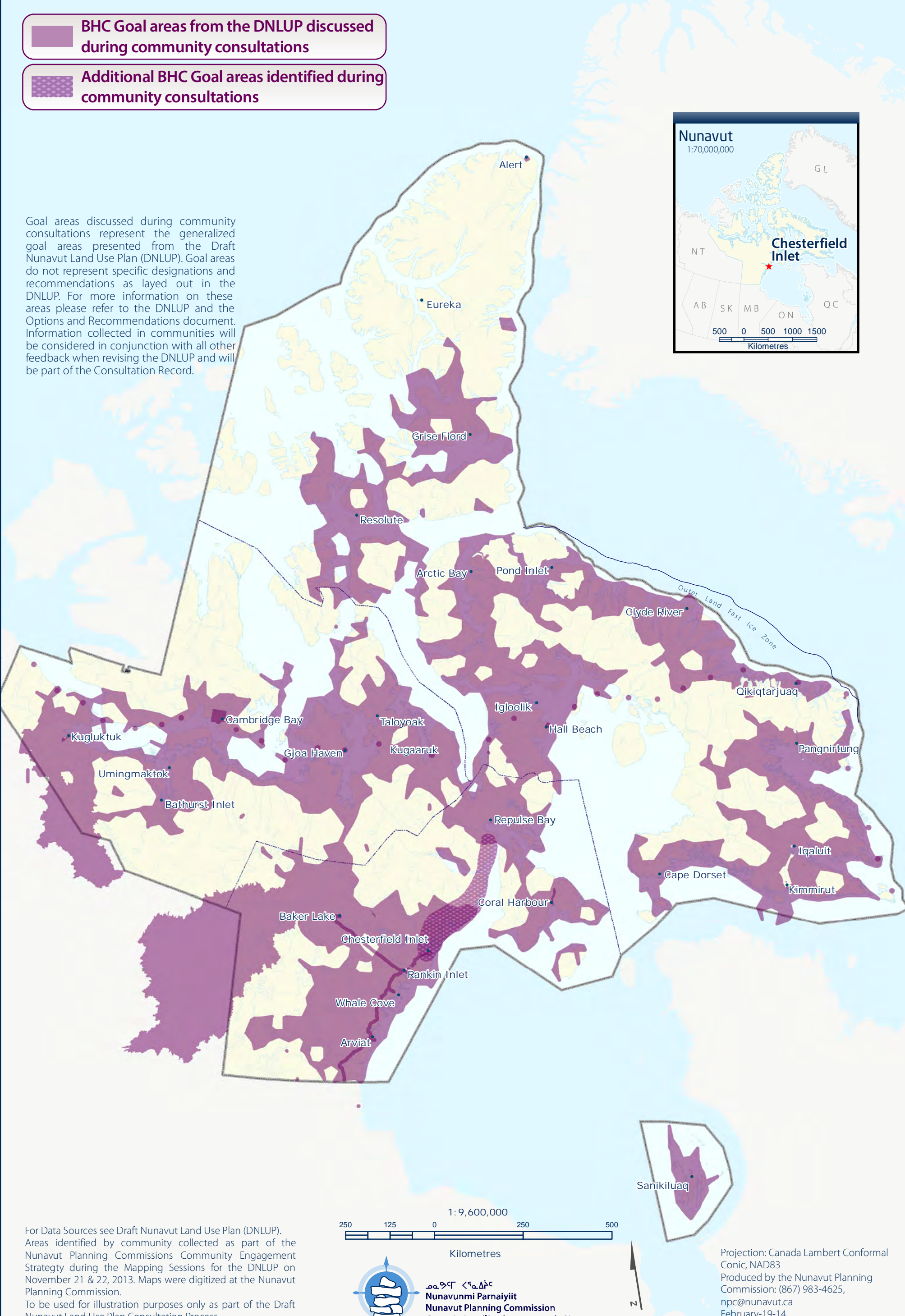




BUILDING HEALTHIER COMMUNITIES (BHC)  
CHESTERFIELD INLET • MAP 3

-  BHC Goal areas from the DNLUP discussed during community consultations
-  Additional BHC Goal areas identified during community consultations

Goal areas discussed during community consultations represent the generalized goal areas presented from the Draft Nunavut Land Use Plan (DNLUP). Goal areas do not represent specific designations and recommendations as layed out in the DNLUP. For more information on these areas please refer to the DNLUP and the Options and Recommendations document. Information collected in communities will be considered in conjunction with all other feedback when revising the DNLUP and will be part of the Consultation Record.



For Data Sources see Draft Nunavut Land Use Plan (DNLUP). Areas identified by community collected as part of the Nunavut Planning Commissions Community Engagement Strategy during the Mapping Sessions for the DNLUP on November 21 & 22, 2013. Maps were digitized at the Nunavut Planning Commission. To be used for illustration purposes only as part of the Draft Nunavut Land Use Plan Consultation Process.



ᓄᓇᓂᓄᓐ ᐸᓐᓇᓂᓄᓐ  
Nunavunmi Parnaiyiit  
Nunavut Planning Commission  
Commission d'Aménagement du Nunavut



# Chapter 5: Encouraging Sustainable Economic Development

Encouraging Sustainable Economic Development was one of five topics presented to and discussed by the participants during the information sharing and gathering sessions.

## 5.1 Areas presented to participants

During the information sharing and gathering sessions, participants were presented with the following areas important to Encouraging Sustainable Economic Development;

- Mineral Exploration and Production
- Oil and Gas Exploration
- Commercial Fisheries

The importance of these issues and areas to Encouraging Sustainable Economic Development was not disputed by participants during the information sharing and gathering sessions.

## 5.2 Areas identified by participants

Additional areas and issues were identified by participants as important to Encouraging Sustainable Economic Development during the information sharing and gathering sessions. The additional areas identified are;

- Commercial fishery
- Potential deep water port
- Sport hunting areas
- Soapstone sites

## 5.3 Areas of importance to Encouraging Sustainable Economic Development

Areas and issues discussed during the information sharing and gathering sessions as important to Encouraging Sustainable

Economic Development are illustrated on Map 4, including areas identified in the DNLUP and areas identified by the community. Scanned images of the maps on which community feedback was recorded can be found in Appendix 4.

Based on discussions with participants, the NPC understands that:

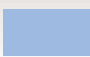

- The areas identified on Map 4 are considered by the Community to be important to Encouraging Sustainable Economic Development.
- In these areas, the community would like the NLUP to encourage activities that support economic opportunities and needs.

This feedback will be considered in conjunction with all other feedback when revising the DNLUP.

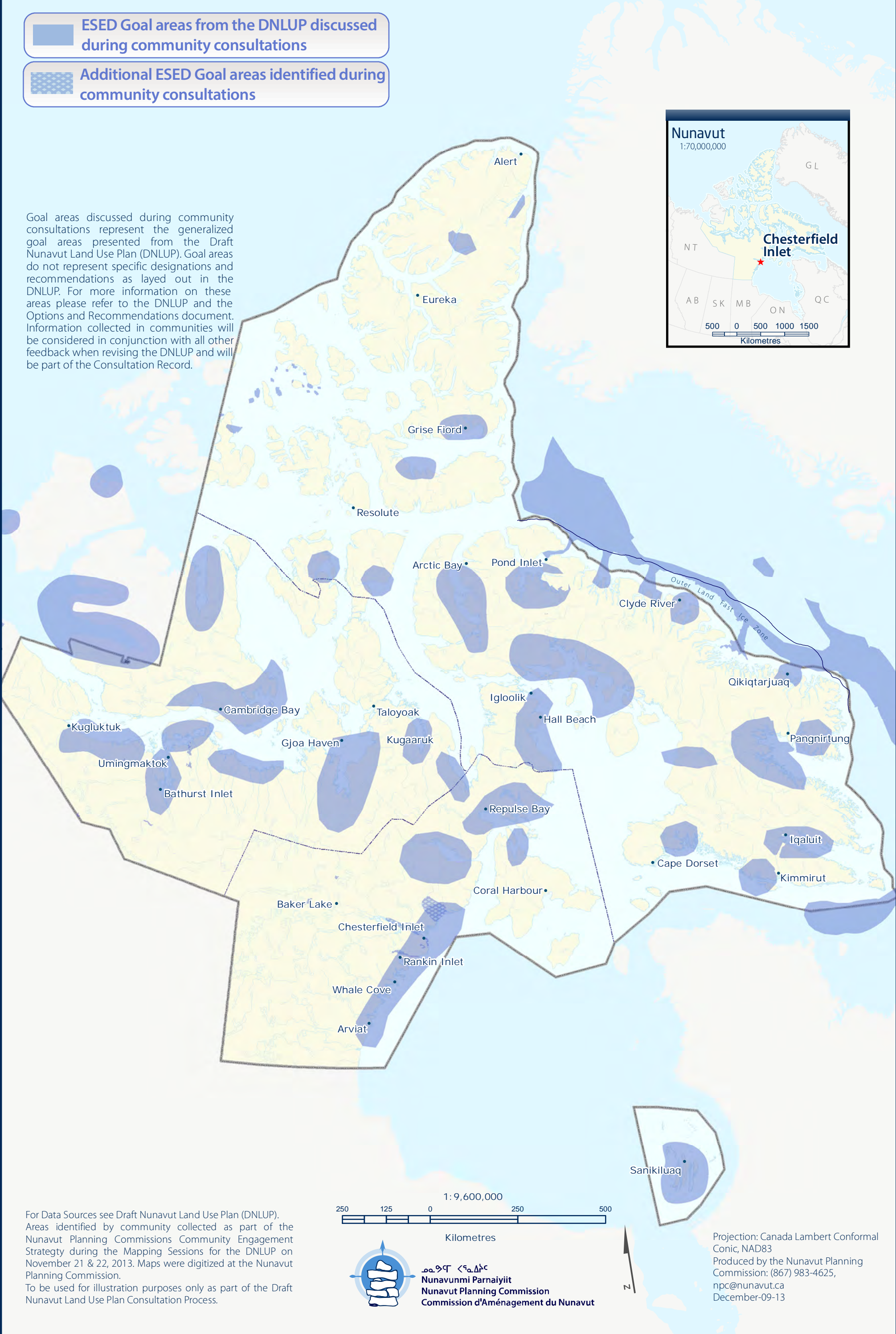




ENCOURAGING SUSTAINABLE ECONOMIC DEVELOPMENT (ESED)  
CHESTERFIELD INLET • MAP 4

-  ESED Goal areas from the DNLUP discussed during community consultations
-  Additional ESED Goal areas identified during community consultations

Goal areas discussed during community consultations represent the generalized goal areas presented from the Draft Nunavut Land Use Plan (DNLUP). Goal areas do not represent specific designations and recommendations as layed out in the DNLUP. For more information on these areas please refer to the DNLUP and the Options and Recommendations document. Information collected in communities will be considered in conjunction with all other feedback when revising the DNLUP and will be part of the Consultation Record.



For Data Sources see Draft Nunavut Land Use Plan (DNLUP). Areas identified by community collected as part of the Nunavut Planning Commissions Community Engagement Strategy during the Mapping Sessions for the DNLUP on November 21 & 22, 2013. Maps were digitized at the Nunavut Planning Commission. To be used for illustration purposes only as part of the Draft Nunavut Land Use Plan Consultation Process.



ᓄᓇᓂᓄᓐ ᐸᓄᓇᐱᓐᓂᓐ  
Nunavunmi Parnaiyiit  
Nunavut Planning Commission  
Commission d'Aménagement du Nunavut



### 6.1 Areas identified in the Draft Plan

The DNLUP identifies areas important for a variety of uses. These areas were presented to participants during the workshop as Mixed Use Areas. These areas, as they occur around the community, are illustrated on Map 5.

### 6.2 Areas identified by participants

No additional areas were identified as Mixed Use by participants. However, some areas identified as Mixed Use in the DNLUP were considered by participants to require additional protection because of their particular qualities. These areas and the goals they are important for are identified on Map 6.

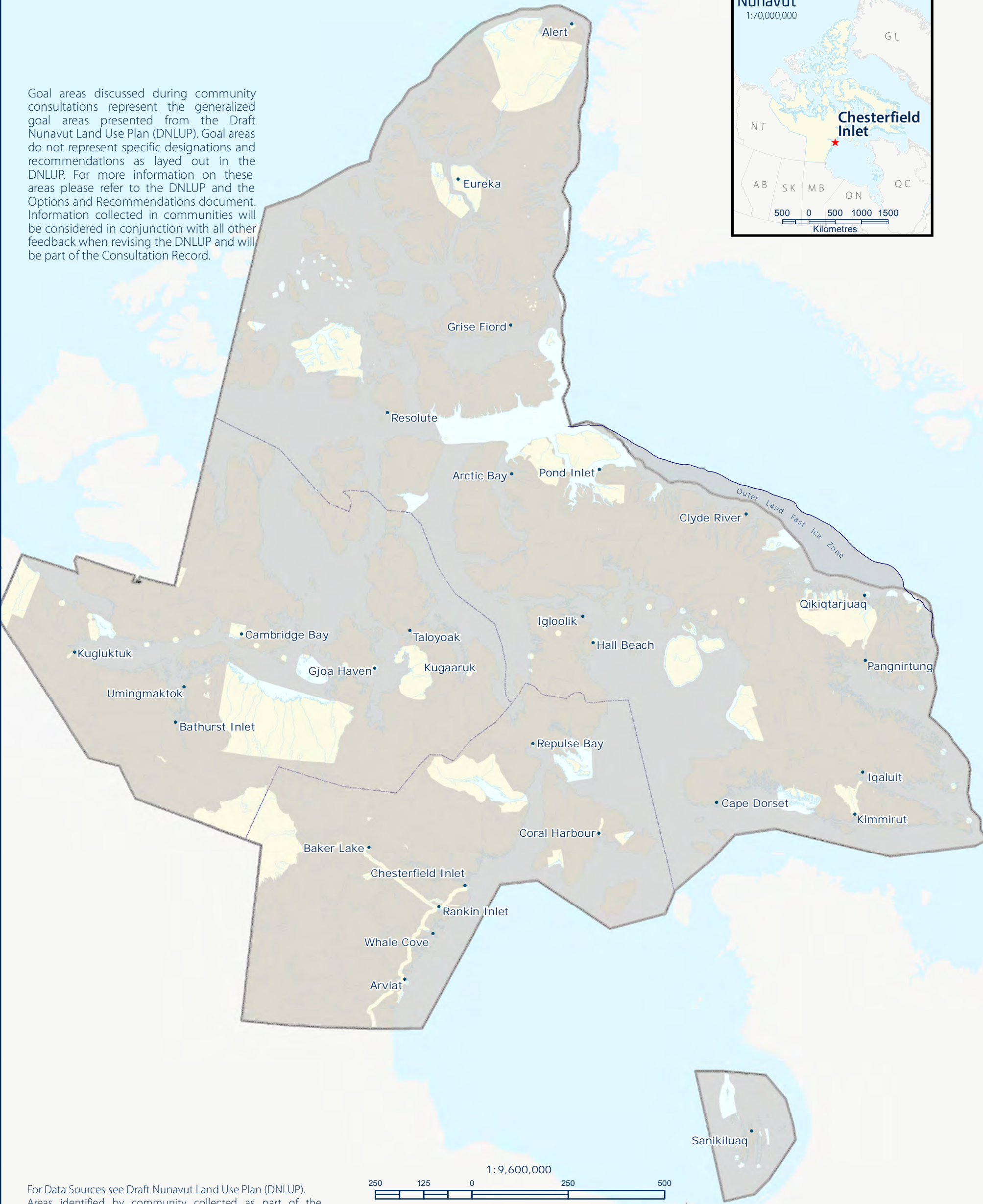






MU Goal areas from DNLUP discussed during community consultations

Goal areas discussed during community consultations represent the generalized goal areas presented from the Draft Nunavut Land Use Plan (DNLUP). Goal areas do not represent specific designations and recommendations as layed out in the DNLUP. For more information on these areas please refer to the DNLUP and the Options and Recommendations document. Information collected in communities will be considered in conjunction with all other feedback when revising the DNLUP and will be part of the Consultation Record.



For Data Sources see Draft Nunavut Land Use Plan (DNLUP). Areas identified by community collected as part of the Nunavut Planning Commissions Community Engagement Strategy during the Mapping Sessions for the DNLUP on November 21 & 22, 2013. Maps were digitized at the Nunavut Planning Commission. To be used for illustration purposes only as part of the Draft Nunavut Land Use Plan Consultation Process.



ᓄᓇᓂᓄᓐ ᐸᓐᓇᐱᓐᓴᓐ  
Nunavunmi Parnaiyiit  
Nunavut Planning Commission  
Commission d'Aménagement du Nunavut



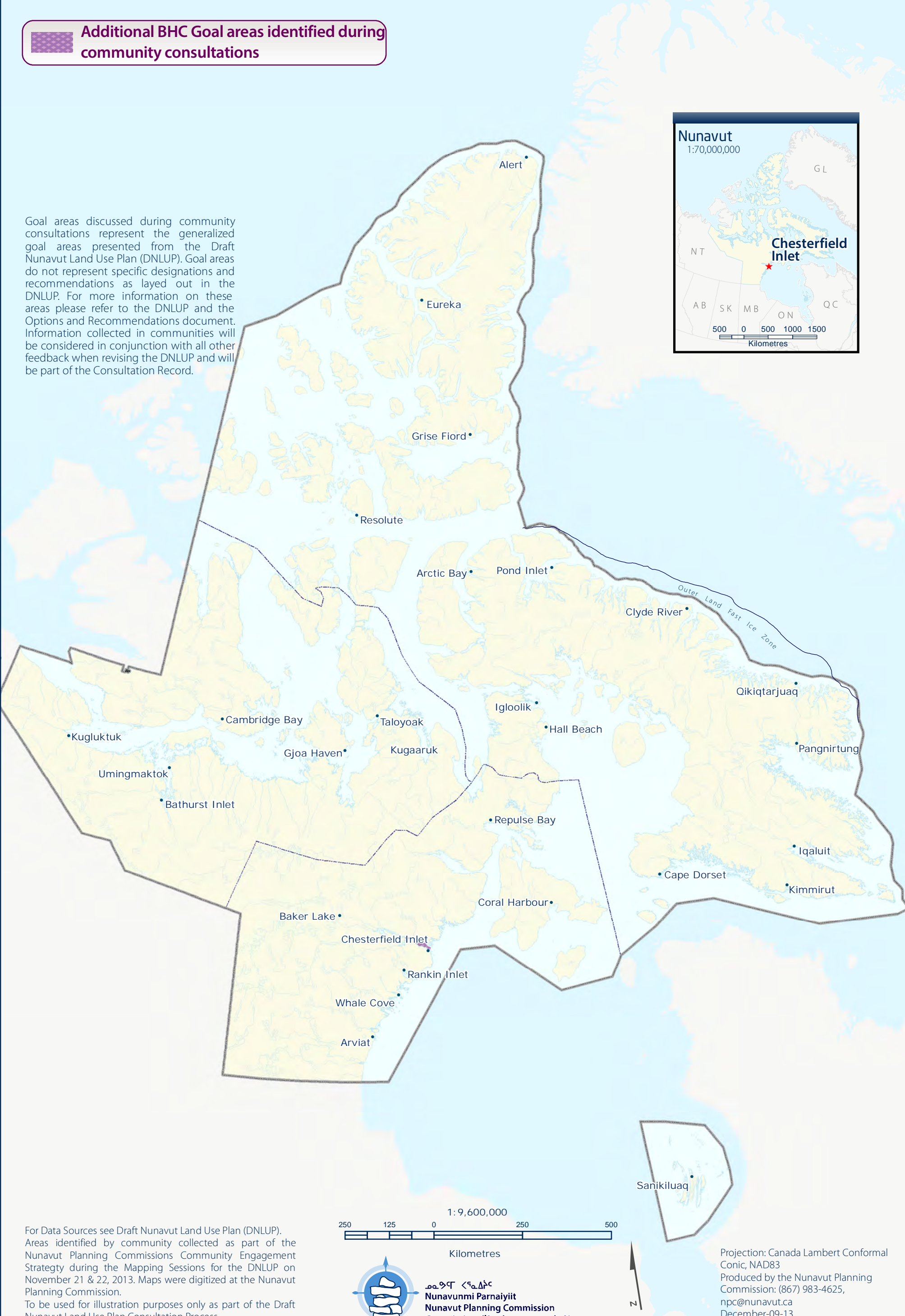
Projection: Canada Lambert Conformal Conic, NAD83  
Produced by the Nunavut Planning Commission: (867) 983-4625, npc@nunavut.ca  
December-09-13





Additional BHC Goal areas identified during community consultations

Goal areas discussed during community consultations represent the generalized goal areas presented from the Draft Nunavut Land Use Plan (DNLUP). Goal areas do not represent specific designations and recommendations as layed out in the DNLUP. For more information on these areas please refer to the DNLUP and the Options and Recommendations document. Information collected in communities will be considered in conjunction with all other feedback when revising the DNLUP and will be part of the Consultation Record.



For Data Sources see Draft Nunavut Land Use Plan (DNLUP). Areas identified by community collected as part of the Nunavut Planning Commissions Community Engagement Strategy during the Mapping Sessions for the DNLUP on November 21 & 22, 2013. Maps were digitized at the Nunavut Planning Commission. To be used for illustration purposes only as part of the Draft Nunavut Land Use Plan Consultation Process.

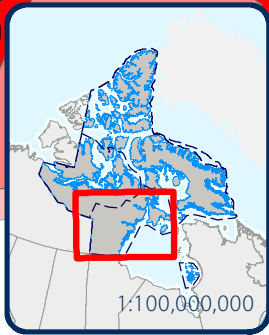


### 7.1 Areas identified for multiple goals

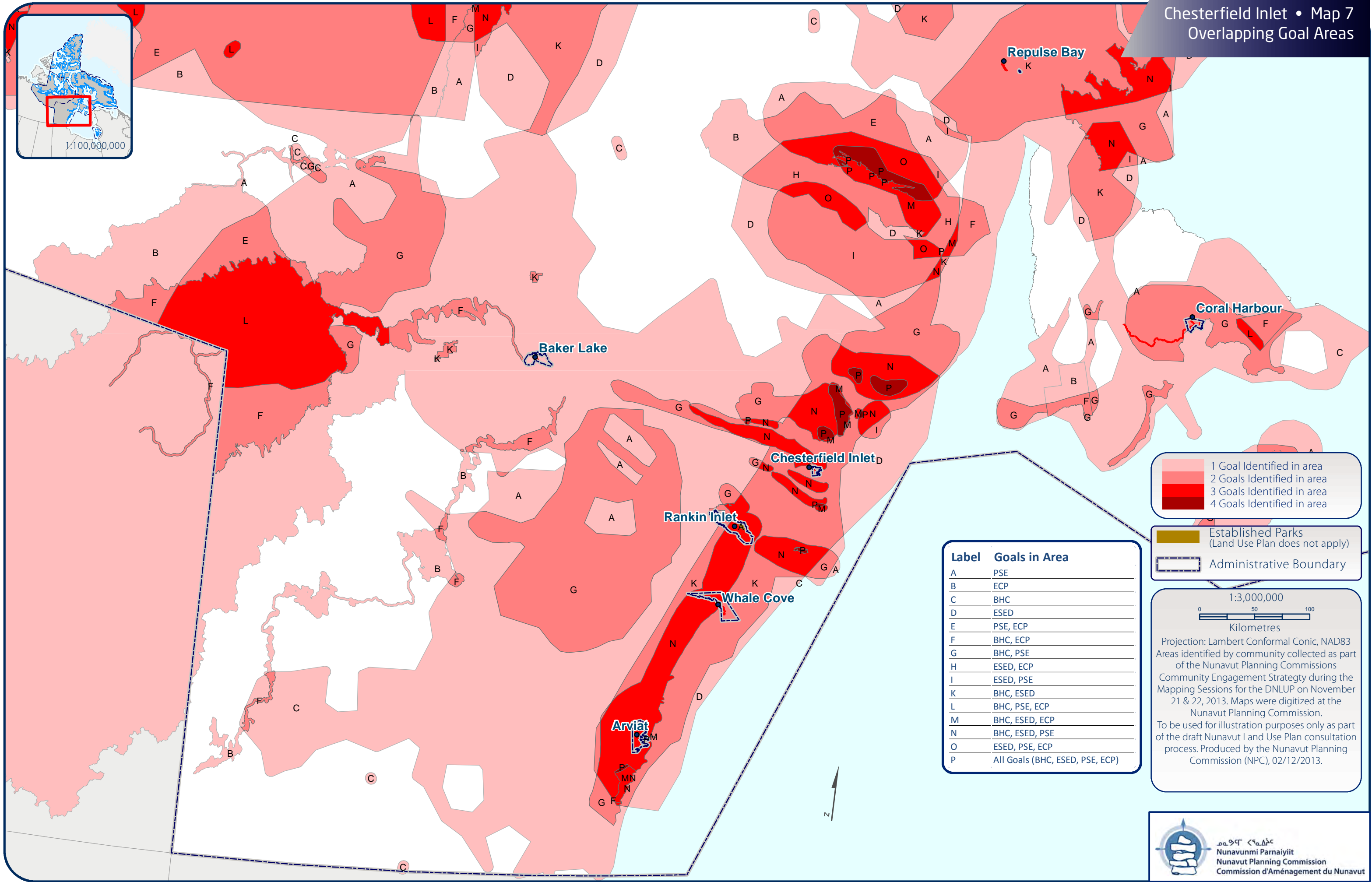
All areas discussed with the community as important for a particular goal are shown on Map 7. In some instances, areas have been identified as important for multiple goals. These areas, and the specific goals they are important to, are also shown on Map 7. In these areas, the NPC will take all of the identified goals and all other feedback into consideration when revising the DNLUP.







1:100,000,000



1 Goal Identified in area  
2 Goals Identified in area  
3 Goals Identified in area  
4 Goals Identified in area

Established Parks  
(Land Use Plan does not apply)

Administrative Boundary

1:3,000,000

0 50 100  
Kilometres

Projection: Lambert Conformal Conic, NAD83  
Areas identified by community collected as part  
of the Nunavut Planning Commissions  
Community Engagement Strategy during the  
Mapping Sessions for the DNLUP on November  
21 & 22, 2013. Maps were digitized at the  
Nunavut Planning Commission.  
To be used for illustration purposes only as part  
of the draft Nunavut Land Use Plan consultation  
process. Produced by the Nunavut Planning  
Commission (NPC), 02/12/2013.

**Label Goals in Area**

A	PSE
B	ECP
C	BHC
D	ESED
E	PSE, ECP
F	BHC, ECP
G	BHC, PSE
H	ESED, ECP
I	ESED, PSE
K	BHC, ESED
L	BHC, PSE, ECP
M	BHC, ESED, ECP
N	BHC, ESED, PSE
O	ESED, PSE, ECP
P	All Goals (BHC, ESED, PSE, ECP)



ᓄᓇᓂᓄᓐ ᐃᓕᓐᓂᓐ  
Nunavunmi Parnaiyiit  
Nunavut Planning Commission  
Commission d'Aménagement du Nunavut



# Appendix 1: Open House

During the open house, participants raised the following issues:

- Wants GN boundary expanded between Chesterfield Inlet and Rankin Inlet. Want equal boundary between towns (similar distance between towns and similar ownership of land). We didn't understand the boundaries when we negotiated it and want to change it now.
- The road to Manitoba is good idea but want to have a lot of input.
- Used to have lots of seal in the area. Since the mine in Baker Lake started shipping through Chesterfield Inlet we never see seals in the summer anymore. Only see them in the winter after the ships go.
- Hunt walrus in May/June near Chesterfield Inlet shore.
- Concern for walrus in Steensby Inlet if mine uses it.
- Caribou used to Pass Rankin Inlet in June and July. Now the route is very different.
- Go narwhale hunting in Repulse Bay.
- The proposed road from Manitoba isn't worth the money it will cost to develop it. Why destroy the land and culture for a road that will probably be used for drugs and bootlegging.
- Mining is short term. Life of a mine is around 25 years. It's too short given the damage it does. I want to see long term economic solutions for Nunavut.
- North of Chesterfield Inlet around Cape Fullerton there's an area where the RCMP were first established in Nunavut in the 1900's. There are graves around the area as well. It isn't an established historic site. Would like to see it established.
- Some people want to see a road go from Chesterfield Inlet to Baker Lake because of the Areva project. A road will have less impact on marine life than the shipping that is currently done.
- Caribou after mining started now do not come up from Rankin. We are lucky we can cross the inlet to get to undisturbed caribou to north.
- Also no sea mammals since the shipping started for the mine. Sea mammals are disturbed by the vibration, noise pollution from the ship. There is supposed to be a wildlife observer on ships.
- Chris Grosset and Marla with Arlluk Consulting in Ottawa did a heritage and archaeological study for Chesterfield Inlet.
- Arctic Char commercial fishing happens every year and I have noticed less char.
- Barges coming and going into inlet – lots of traffic – we should charge - what's our toll for using the inlet?





## Appendix 2: Elected Officials Meeting

The elected officials meeting was attended by the Mayor and members of the Hamlet Council and HTO. During the meeting, participants raised the following issues:

- Concerned about location of water reservoir and sewage lagoon in relation to airstrip. Also interested in expanding municipal boundary, and constructing a road inland to support recreational activities.
  - The Commission advised that the Government of Nunavut Department of Community and Government Services is the main contact for these issues.
- Concerned about caribou calving grounds being disturbed by mining companies. Chesterfield Inlet has been greatly impacted by companies. We have heavy ship traffic and our mammals have disappeared. Helicopters create huge amounts of noise that disturb animals. It does not appear that companies are following the rules about low level flights.
- Concerned about not being aware of mining camps that are coming on line. Agnico is in a calving area. We are not receiving information. If they had come to us in the beginning we would have objected greatly. They are also working in caribou migration routes.
- Concerned about being unaware of the activity to explore until after it was approved. We have already been affected by the mining on the land and now with the shipping marine mammals are disappearing. We have been living off this land for centuries and mining over the past few years has changed all of that.
- Every July there is caribou herd migration from Rankin towards to Chesterfield. Elders have always said do not shoot the first herd. But people do not listen. Because people shoot the first herd and no animals are coming this way any longer. It applies to hunters in Rankin Inlet.
  - The Commission advised that the information would be passed on.
- Concerned about restrictions being placed on the locations of cabins.
- Concerned about information not being shared regarding spills.
- Concerned about the number of helicopters.





## Appendix 3: Questions and Answers

During the community workshop, there was a question and answer period, which included a discussion of the following topics:

- Concern that marine traffic from Agnico Eagle and mines have affected animals (marine and land). Believe that caribou herds no longer come near the town because of blasting at Meliadine mine. 'It affects us greatly.' Believe that the increase in shipping due to mining activity is too much for the bay. 'It's depressing being a hunter knowing that the number of animals are depleting.' For 14 years they expect to travel, but if they build roads it would be much better for us here.
  - o The Commission answered that the concerns are noted, and it's important that you share these issues in detail during the mapping session so we record them accurately. It will be documented and we will be back to verify the information.



## Appendix 4: Community Workshop Scanned Maps

Two groups completed the mapping session to identify important areas. This Appendix contains the maps that were used by participants to identify areas that are important to the following land use planning goals:

- Protecting and Sustaining the Environment
- Encouraging Conservation Planning
- Building Healthier Communities
- Encouraging Sustainable Economic Development
- Mixed Use

Also included on each map is a reference table that includes the specific values that were identified for the area.

During the mapping portion of the community workshop, the following concerns were raised that did not apply to a specific area that was identified on the maps:

- Rankin is a new community; Chesterfield Inlet is an old community. Since Rankin Inlet has been a community, caribou herd has not been coming to this area. When Meliadine project is operational, routes of caribou will be altered again. Whale Cove had family living there some time before it became a community.
- Rankin Inlet and Chesterfield Inlet will be greatly affected (by Meliadine project)- Whales, seals by mine marine activity
- In addition to the problem of marine shipping impacting marine mammals, there is the Manitoba road proposal. Uranium delivery should depart from Chesterfield because it is safer. Ships carrying uranium could be shipwrecked. A roadway is safer.
- Marble Island ECP-2(109) is historical land mark with four ship wrecks from turn of the century and should be protected. It is significant to the people and for

visitors who come to this island; they should crawl to the high tide mark for the respect of the environment.

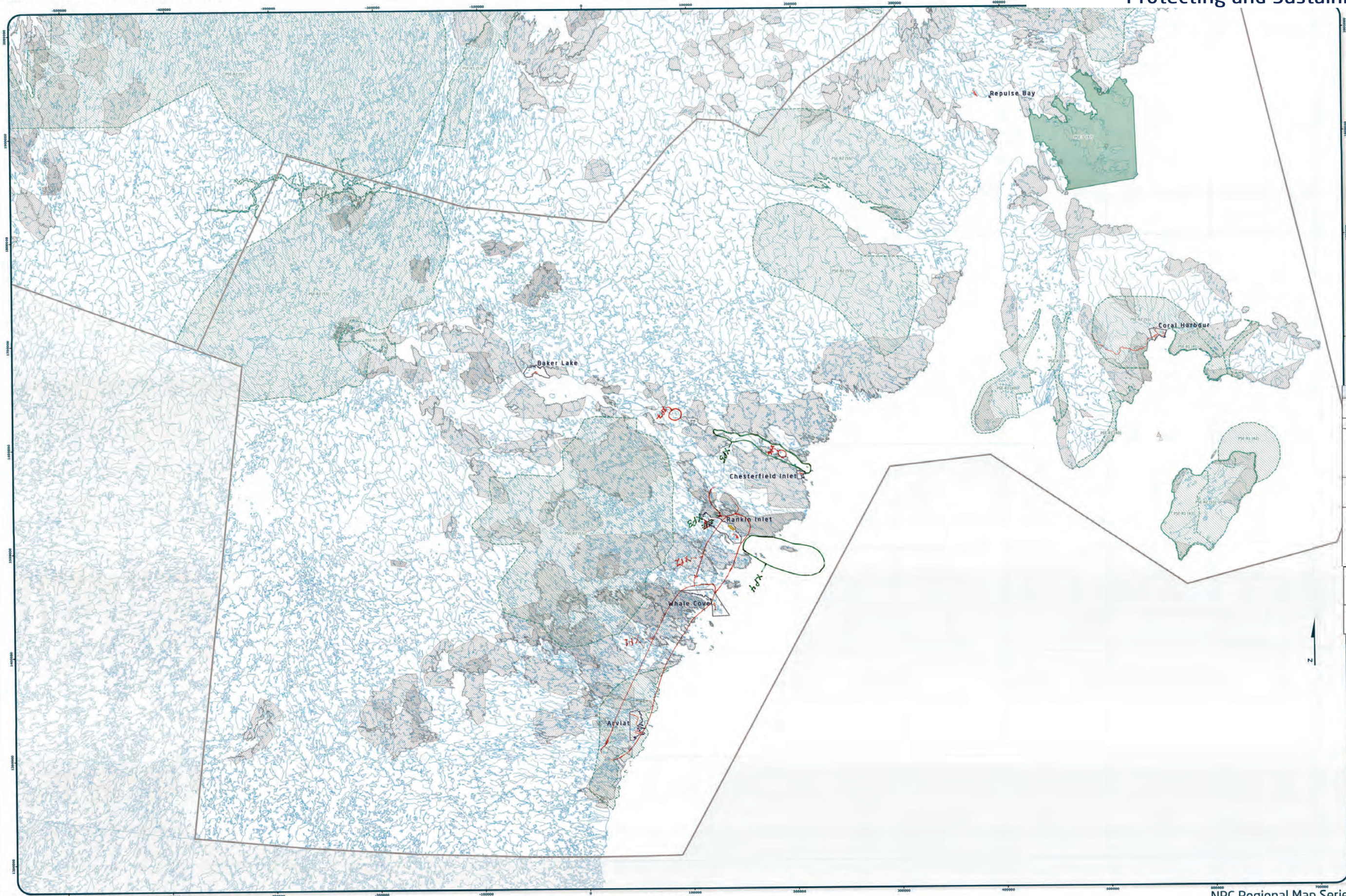
- Drinking water in this community is poor for the town, it is surrounded by sewage lagoon, airport dust upon planes taking off and the local garbage dump, the problem is on all three sides of the drinking water.
- Caribou calving ground would need protection from exploration activities. Marked on PSE map as recommendation.
- Seals are rare in the area now.
- Arctic terns are rare in the area now. Used to be lots of them. Have to travel further to see terns.
- Sandpipers- used to see a lot of them but now never see them.
- Agree with Use and Occupancy Mapping data for community use (BHC-R2).
- Drinking water lakes - First Lake, Second Lake, Third Lake, Tasialuk Lake, Qanak Checkers Lake.
- Rather preserve the land how it is right now. Support economic development of fishing out in the ocean during the summer. We do enough commercial fishing in summer season, leave the rivers alone.
- Not happy to see exploration come in and not clean up and not give anything to the community.



Chesterfield Inlet - Group 1 Results  
Protecting and Sustaining the Environment

PROTECTING AND SUSTAINING THE ENVIRONMENT (PSE)

Scale 1:1,000,000



**Legend**

— Roads  
— Established Parks (Land Use Plan does not apply)  
— Trust Owned Lands (Surface)  
— Trust Owned Lands (Sub-surface)  
— Administrative Boundary

Designations	Permitted Uses	Prohibited Uses
PSE-01	Research, Recreation, Research	All Other Uses
PSE-02	Research, Recreation, Research	
PSE-03	Research, Recreation, Research, Marine Communications and Electrical Cables	

**Reference Table for Recommendations**

PSE-01	Project Proposals located in a Key First Habitat Site should take into account impacts on the existing food web and on the site.
PSE-02	Project Proposals located in a Key First Habitat Site should take into account impacts on caribou calving, caribou calving areas and migration routes.
PSE-03	Project Proposals located in a Key First Habitat Site should take into account impacts on caribou calving, caribou calving areas and migration routes.
PSE-04	Project Proposals located in a Key First Habitat Site should take into account impacts on caribou calving, caribou calving areas and migration routes.
PSE-05	Project Proposals located in a Key First Habitat Site should take into account impacts on caribou calving, caribou calving areas and migration routes.

Code	Comments
XP01	this is an area where caribou have migrated for eons and should be protected
XP02	Traditional migration route for caribou
XP03	Agnico Eagle area - Meliadine project. We are concerned about this area where Agnico Eagle is operating, this is where we hunt caribou and it is a prime migration for the herd we depend on for food
XP04	Once activity picks up (Meliadine project), this area here will lose its marine mammals when shipping intensifies
XP05	This area is losing sea mammals since Agnico Eagle came (Meadowbank). Used to harvest Beluga and all species of seals here. In same area, when the Kiggavik project opens this area will be affected worse by marine traffic.
XP06	Ellis Island, Morris Island, South and North Imulite Islands. Tanker sits for a long time here, impacts from vibration on sea mammals
XP07	Helicopter Island - Another tanker sits for a long time, impacts from vibration on sea mammals

Signature of Mapper:

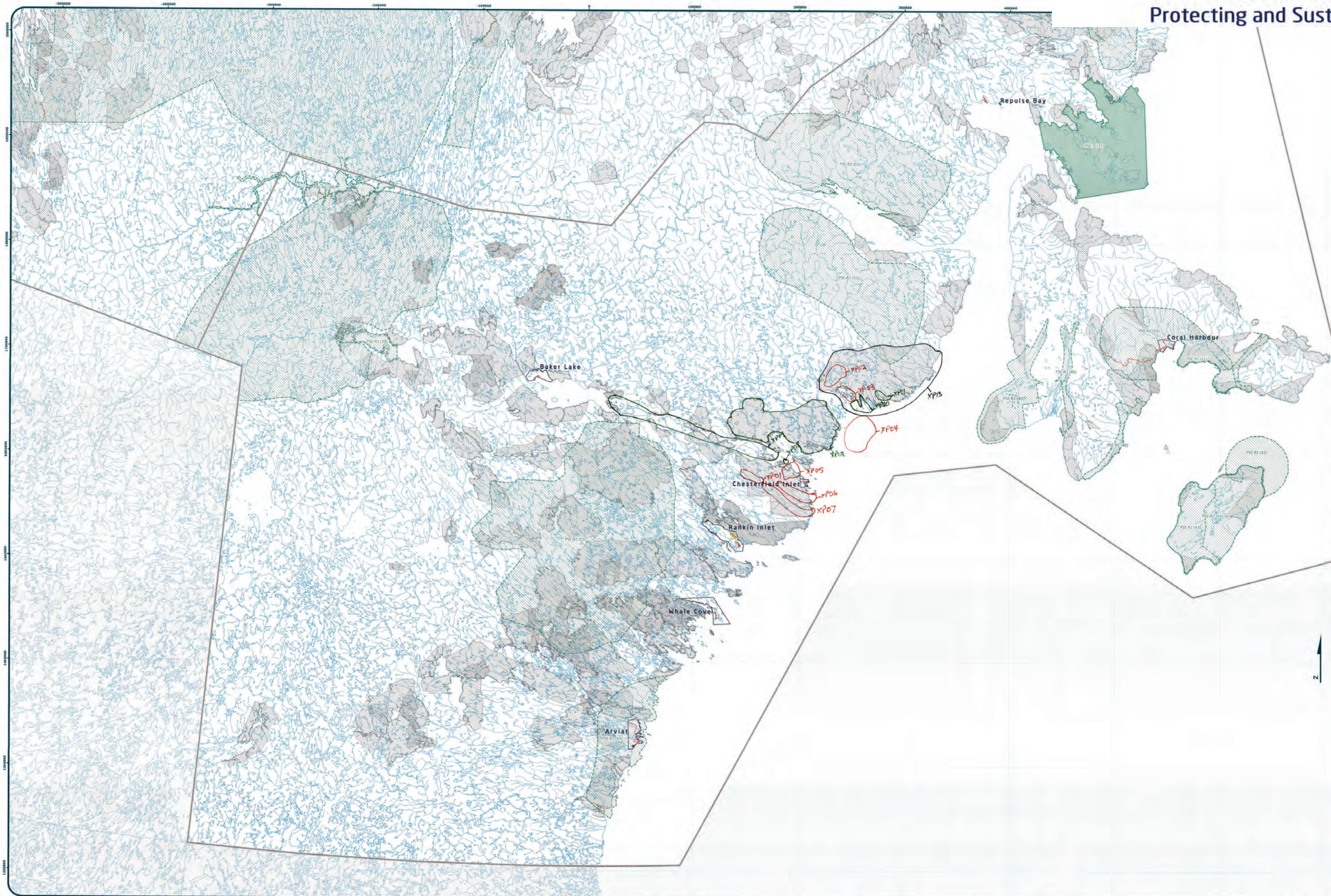
Scale 1:1,000,000

Coordinate System: EPSG 43204 UTM  
Projection: Lambert Conformal Conic  
Datum: North American 1983  
False Easting: 0.0000  
False Northing: 0.0000  
Central Meridian: -95.0000  
Standard Parallel 1: 49.0000  
Standard Parallel 2: 77.0000  
Latitude Of Origin: 49.0000  
Units: Meter

For Land Use Designations and Recommendations sources see draft Nunavut Land Use Plan and background material data source documents.  
Habitat created by utilizing Swiss method in Habitat toolset courtesy of ESRI User Forum. Water bodies created by merging all 1:250,000 WTD shapefiles in Nunavut, version 2.0, and selecting all waterbodies over 50 hectares in size. Land number of Nunavut, courtesy of Government of Nunavut. Administrative boundaries consist of NRC, draft regional boundaries, created to reflect Regional Inuit Association jurisdictions, combined with municipal boundaries, provided by Natural Resources Canada. Land number of Nunavut, courtesy of Nunavut Planning Commission. Temporal parks from the Government of Nunavut. National Parks from Parks Canada. Data for areas within municipal boundaries obtained from Natural Resources Canada. Contacted data.  
This map is to be used for reference purposes only by the NPC.  
Any further use of this map or data must be authorized by contacting the Nunavut Planning Commission at (867) 969-4625 or email [nunavutplanning@nunavut.ca](mailto:nunavutplanning@nunavut.ca)  
Tuesday, October 15, 2013



# Chesterfield Inlet - Group 2 Results Protecting and Sustaining the Environment



Designations	Permitted Uses	Prohibited Uses
PS-1 (1)	Tourism, Recreation, Research	All Other Uses
PS-2 (1)	Tourism, Recreation, Research	
PS-3 (1)	Tourism, Recreation, Research, Marine Infrastructure, Marine Communications and Electrical Cables	

Reference Table for Recommendations	
PS-1	Project Prohibits located in a Key Bird Habitat Site should take into account impacts on the migratory birds that rely on this area.
PS-2	Project Prohibits located in historic caribou calving grounds should take into account impacts on caribou calving, post calving areas and migration routes.
PS-3	Project Prohibits located in and/or near known caribou sea ice crossing areas should take into account impacts that may impact the ability of caribou to cross the ice.
PS-4	Project Prohibits located in portions of the Great Bear Lake watershed in Nunavut should take into account transboundary impacts that may reduce the conservation value of the watershed.

Code	Comments
XP01	Caribou calving grounds
XP02	Caribou calving grounds
XP03	Key bird area. Many types of birds and cod here as well.
XP04	Walrus area.
XP05	Char routes. Swim up in fall and back to ocean in the spring.
XP06	Char routes. Swim up in fall and back to ocean in the spring.
XP07	Char routes. Swim up in fall and back to ocean in the spring.
XP08	This is where ships sit. All summer there are fuel transfers from larger ships to smaller ones that go through Chesterfield Inlet to Baker Lake and the mine. Concerned about fuel spills. The fuel runs downstream from Baker Lake out to the ocean and concerned for all wildlife around there.
XP09	Concern for wildlife (ocean, land, caribou crossing) due to potential fuel spill. Concern that not all ships in the area have a local person on the ship when in the channel.
XP10	Beluga whale
XP11	Ranger seal and arctic char
XP12	white fish, arctic char, land locked char, lots of fish and eels
XP13	white fish, arctic char, land locked char, lots of fish and eels

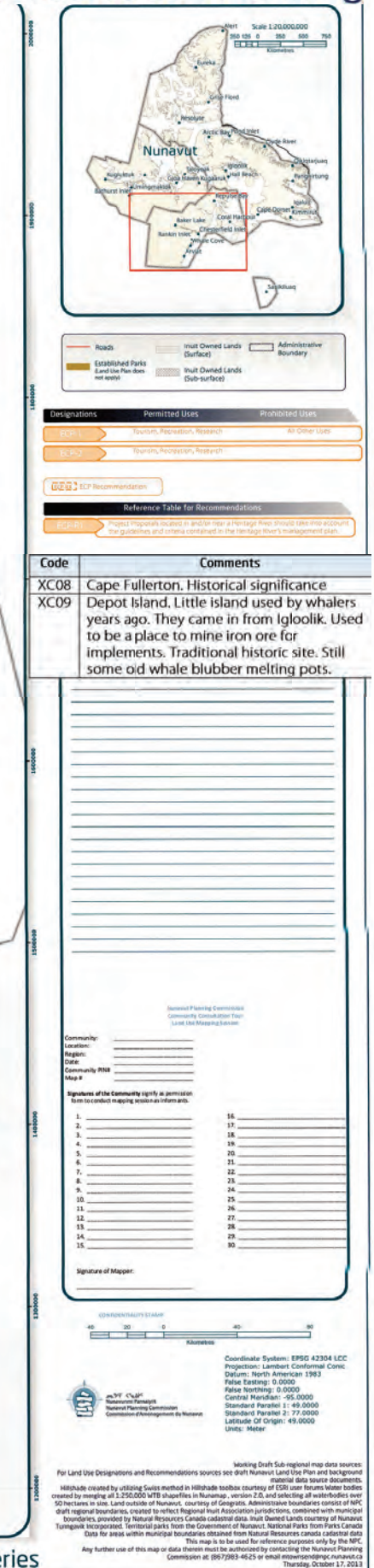
Signature of Mapper: \_\_\_\_\_

DATE: \_\_\_\_\_



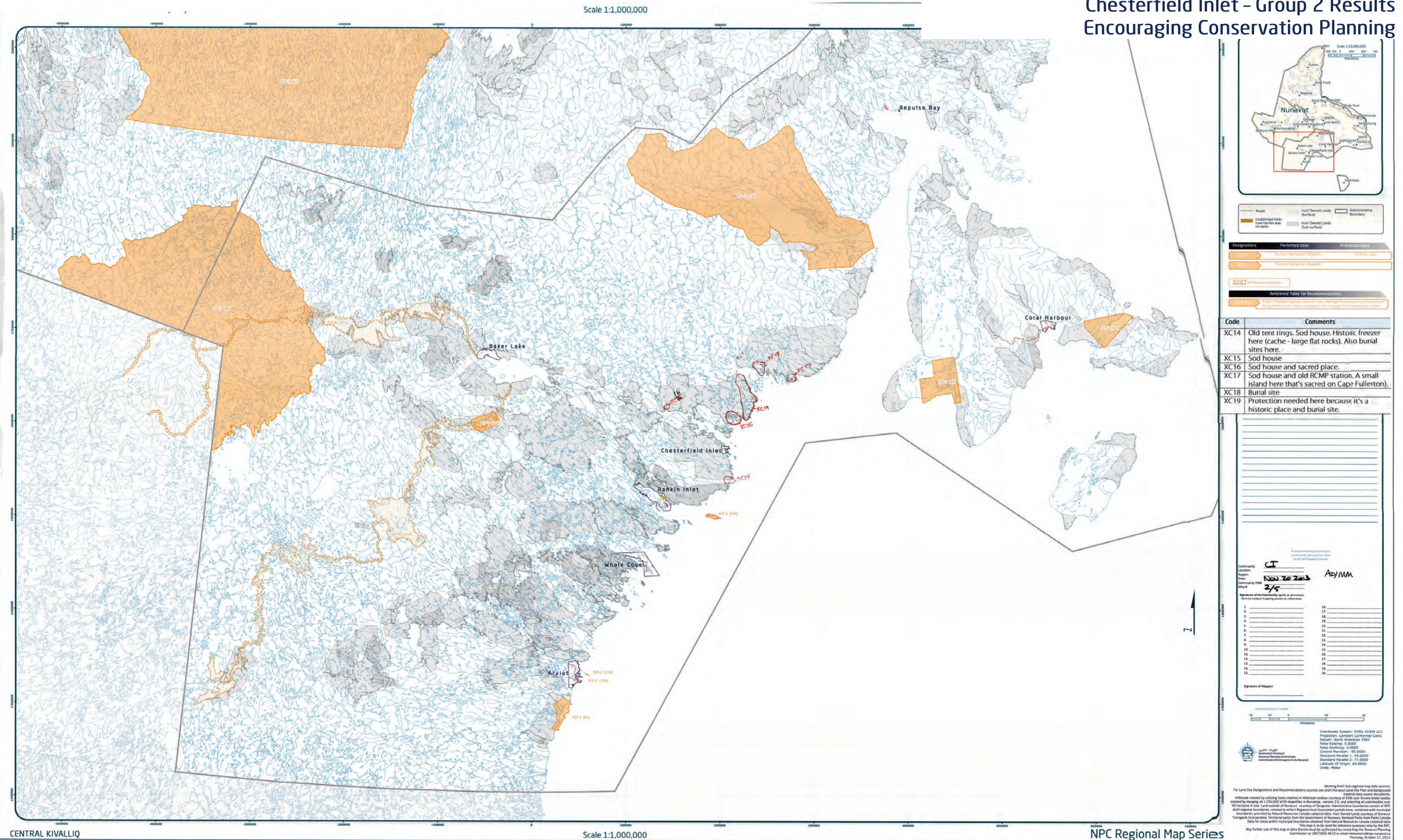
Coordinate System: EPSG 42304 UTM  
Projection: Lambert Conformal Conic  
Datum: North American 1983  
False Easting: 0.0000  
False Northing: 0.0000  
Central Meridian: -95.0000  
Standard Parallel 1: 49.0000  
Standard Parallel 2: 77.0000  
Latitude Of Origin: 49.0000  
Units: Meter





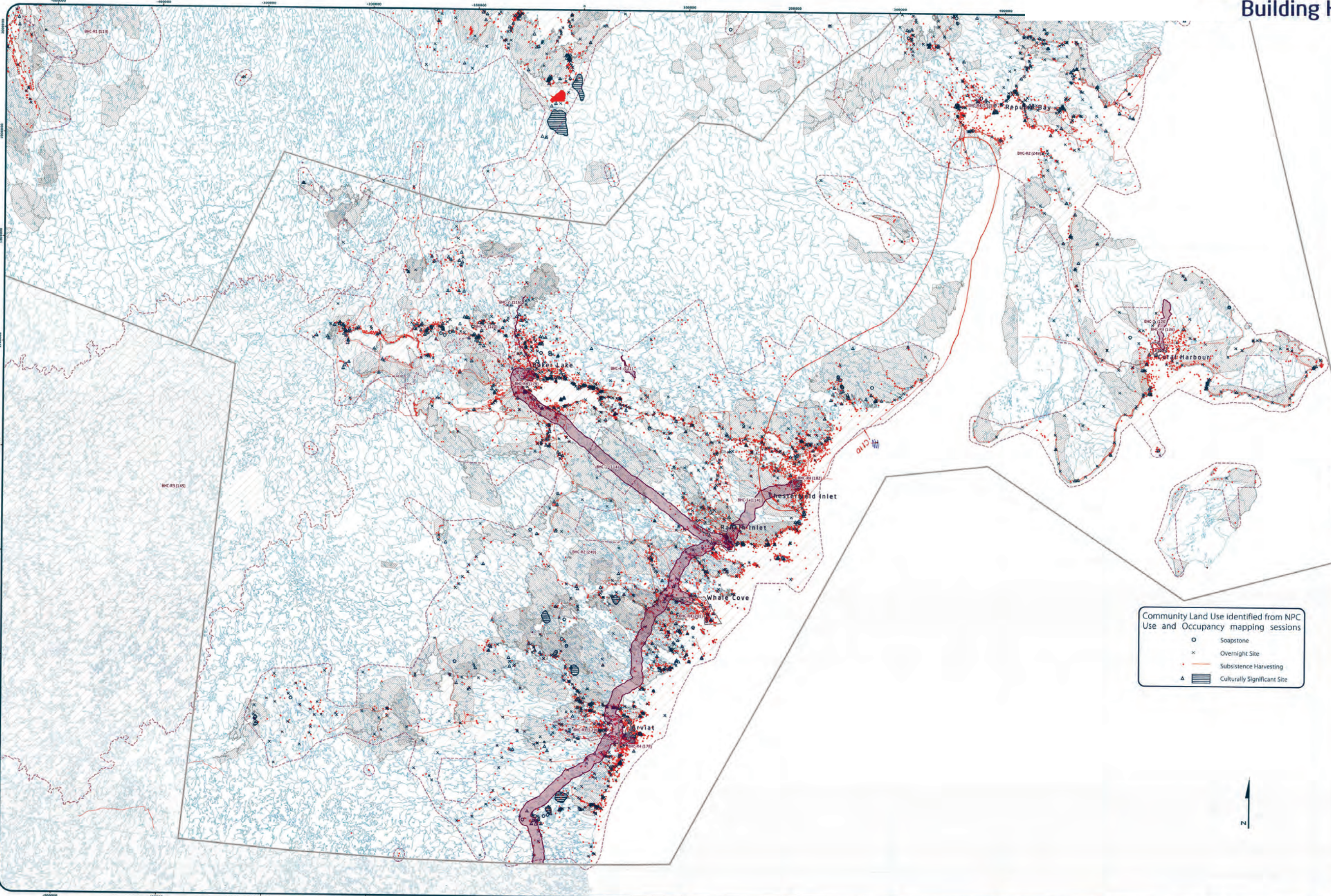


# Chesterfield Inlet - Group 2 Results Encouraging Conservation Planning





Chesterfield Inlet - Group 1 Results  
Building Healthier Communities



Designations	Permitted Uses	Prohibited Uses
BHC-1	Roads, Railways, Utilities and Corridors	
BHC-2	Roads, Railways, Utilities and Corridors	
BHC-3	All uses except those Prohibited	Mining
BHC-4	Hydro electrical and related infrastructure	
BHC-5	Tourism, Recreation and Research, Municipal Services	
BHC-6	Municipal Services	All Other Uses
BHC-7	Municipal Services	
BHC-8	Remediation and Reclamation Activities	All Other Uses
BHC-9	Remediation and Reclamation Activities, DND Operations and Activities	All Other Uses
BHC-10	DND Operations and Activities	All Other Uses

BHC Recommendation	
Code	Comments
BHC-01	Project Proposals located in the Hivizua River Area of Interest should take into account impacts on the cultural value of the area.
BHC-02	Project Proposals located in areas of traditional land use should take into account impacts on the cultural value of the area.
BHC-03	Project Proposals located in a community water supply watershed should take into account impacts on the quality and quantity of community drinking water.
BHC-04	Project Proposals located in a municipal Aerodrome should take into account impacts on aerodrome safety.

Code	Comments
C110	Whole area important for hunting, subsistence living for land and sea mammals. During spring the floe edge is where we hunt

Community: \_\_\_\_\_  
Location: \_\_\_\_\_  
Region: \_\_\_\_\_  
Theme: \_\_\_\_\_  
Community Plan: \_\_\_\_\_  
Map #: \_\_\_\_\_

Signatures of the Community representative as per the Nunavut Land Use Planning Act

1. _____	16. _____
2. _____	17. _____
3. _____	18. _____
4. _____	19. _____
5. _____	20. _____
6. _____	21. _____
7. _____	22. _____
8. _____	23. _____
9. _____	24. _____
10. _____	25. _____
11. _____	26. _____
12. _____	27. _____
13. _____	28. _____
14. _____	29. _____
15. _____	30. _____

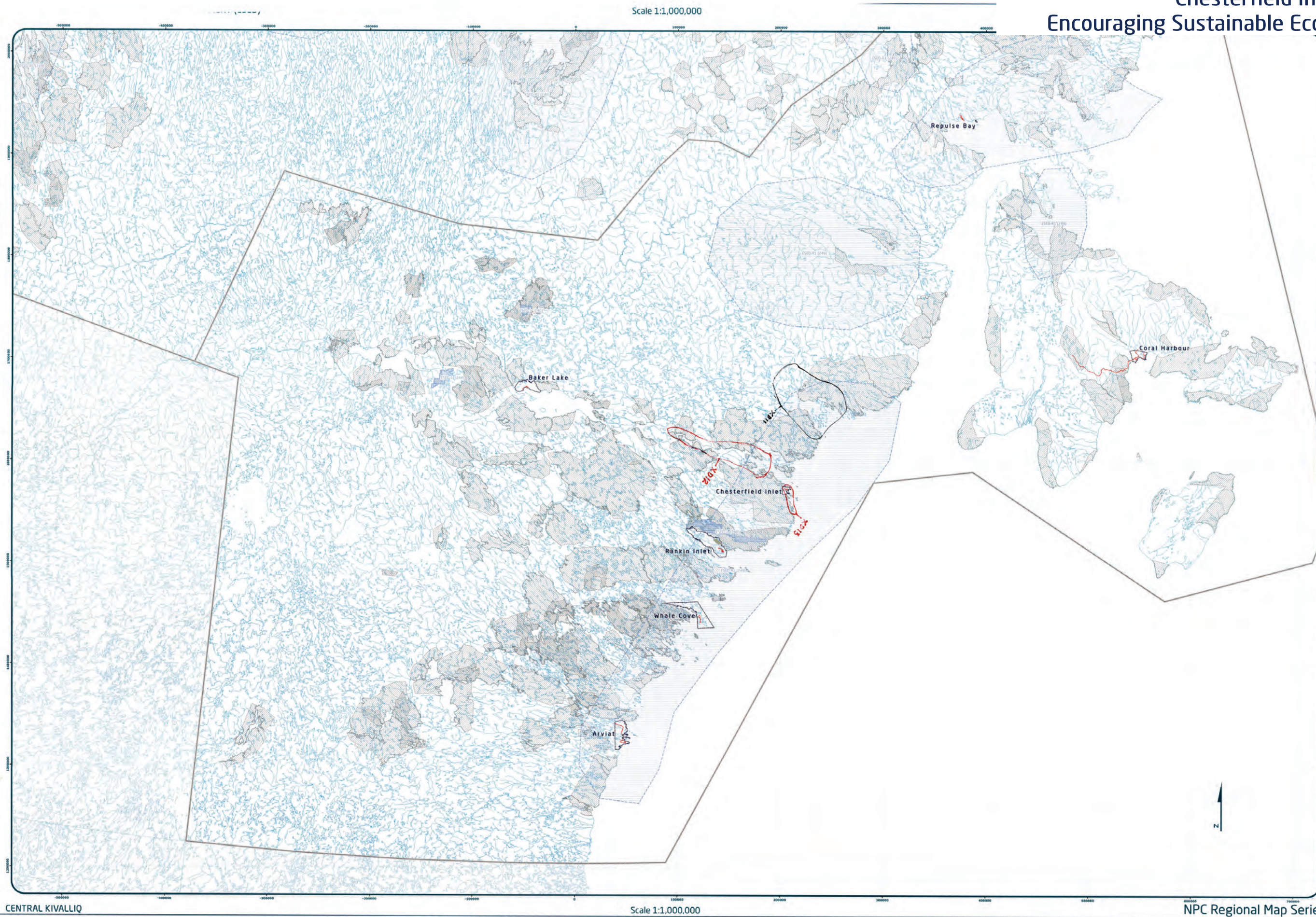
Signature of Mapper: \_\_\_\_\_

Coordinate System: EPSG 42304 LCC  
Projection: Lambert Conformal Conic  
Datum: North American 1983  
False Easting: 0.0000  
False Northing: 0.0000  
Central Meridian: -65.0000  
Standard Parallel 1: -49.0000  
Standard Parallel 2: -77.0000  
Latitude Of Origin: -49.0000  
Units: Meter

For Land Use Designations and Recommendations sources see draft Nunavut Land Use Plan and background material data source documents.  
Use and Occupancy data from NPC Use and Occupancy mapping sessions, 2004 to 2011.  
Hillshade created by utilizing Swiss method in Hivizua mapbook courtesy of ESRI user forums water bodies created by merging all 1:250,000 WTS mapfiles in Nunavut, version 2.0, and selecting all waterbodies over 50 hectares in size. Land outside of Nunavut, courtesy of Geogistics. Administrative boundaries consist of NPC draft regional boundaries, created to reflect regional land use planning jurisdiction, combined with municipal boundaries, provided by Natural Resources Canada cadastrial data. Inuit Owned Lands courtesy of Nunavut Land Use Planning Commission. Territorial parks from the Government of Nunavut. National Parks from Parks Canada. Landmark incorporated from the Government of Nunavut. National Parks from Parks Canada.  
Data for areas within municipal boundaries obtained from Natural Resources Canada cadastrial data.  
This map is to be used for reference purposes only by the NPC.  
Commission at 867/963-4625 or email mts@npc.nunavut.ca  
Thursday, October 17, 2013

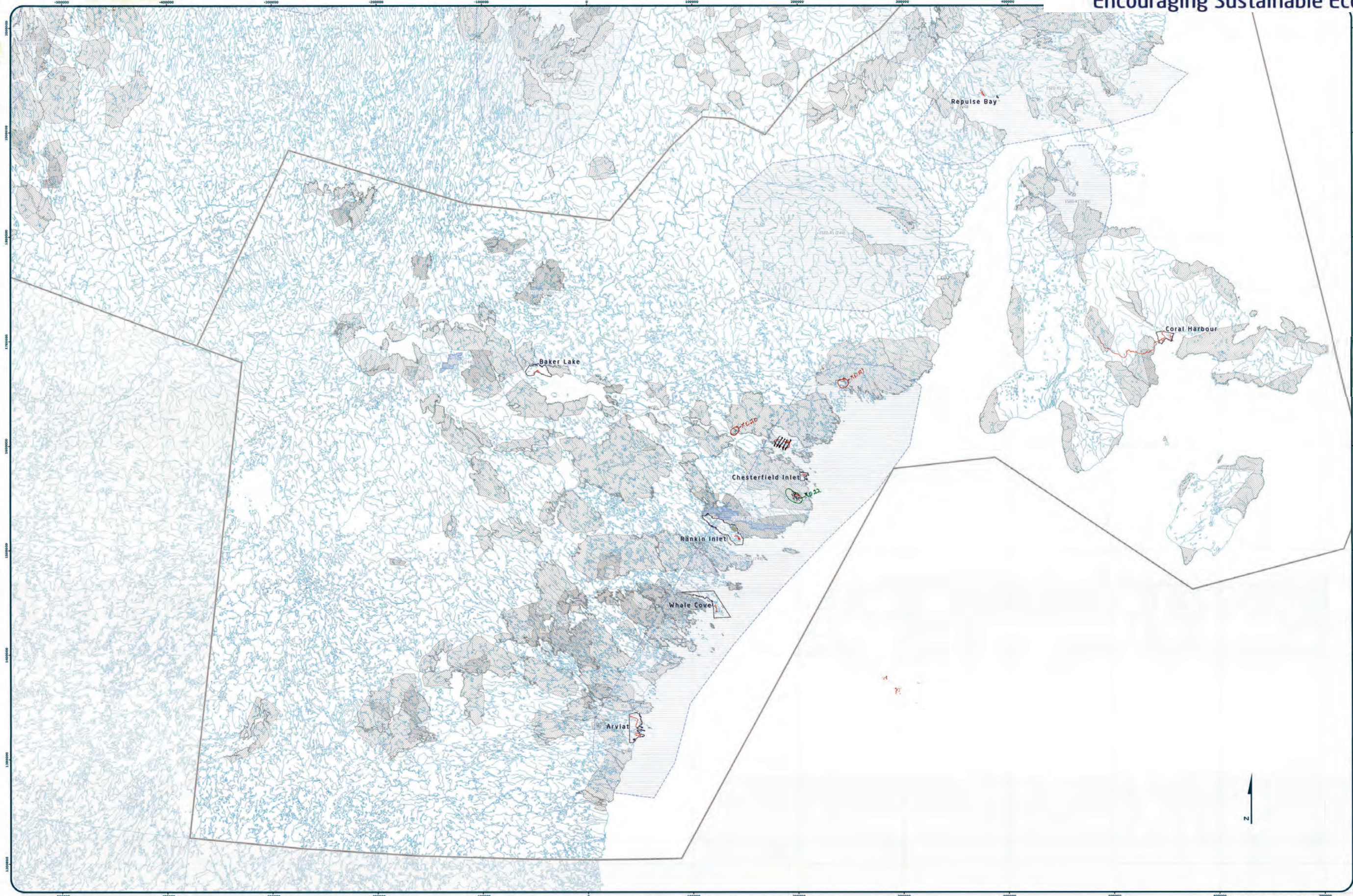


## Chesterfield Inlet - Group 1 Results





Chesterfield Inlet - Group 2 Results  
Encouraging Sustainable Economic Development



Designations	Permitted Uses	Prohibited Uses
1. ESED	Mineral, agricultural and recreational activities, waste management and offshore activities	
2. ESED	Oil and gas exploration and recreational activities	
3. ESED	Oil and gas exploration and recreational activities	

Code	Comments
XD20	Caribou sport hunting at Ranger Seal Bay
XD21	Soapstone
XD22	Mining camp needs to be cleaned up at Josephine Lake

1.	
2.	
3.	
4.	
5.	
6.	
7.	
8.	
9.	
10.	
11.	
12.	
13.	
14.	
15.	
16.	
17.	
18.	
19.	
20.	
21.	
22.	
23.	
24.	
25.	
26.	
27.	
28.	
29.	
30.	

Community: **CI**  
Location: **Nov 20 2013**  
Region: **4/5**  
Community Plan: **AD/MM**

Signature of the Community representative in person:  
Signature of the Community representative in person:  
Signature of the Community representative in person:

Signature of Mapper:  
Signature of Mapper:  
Signature of Mapper:

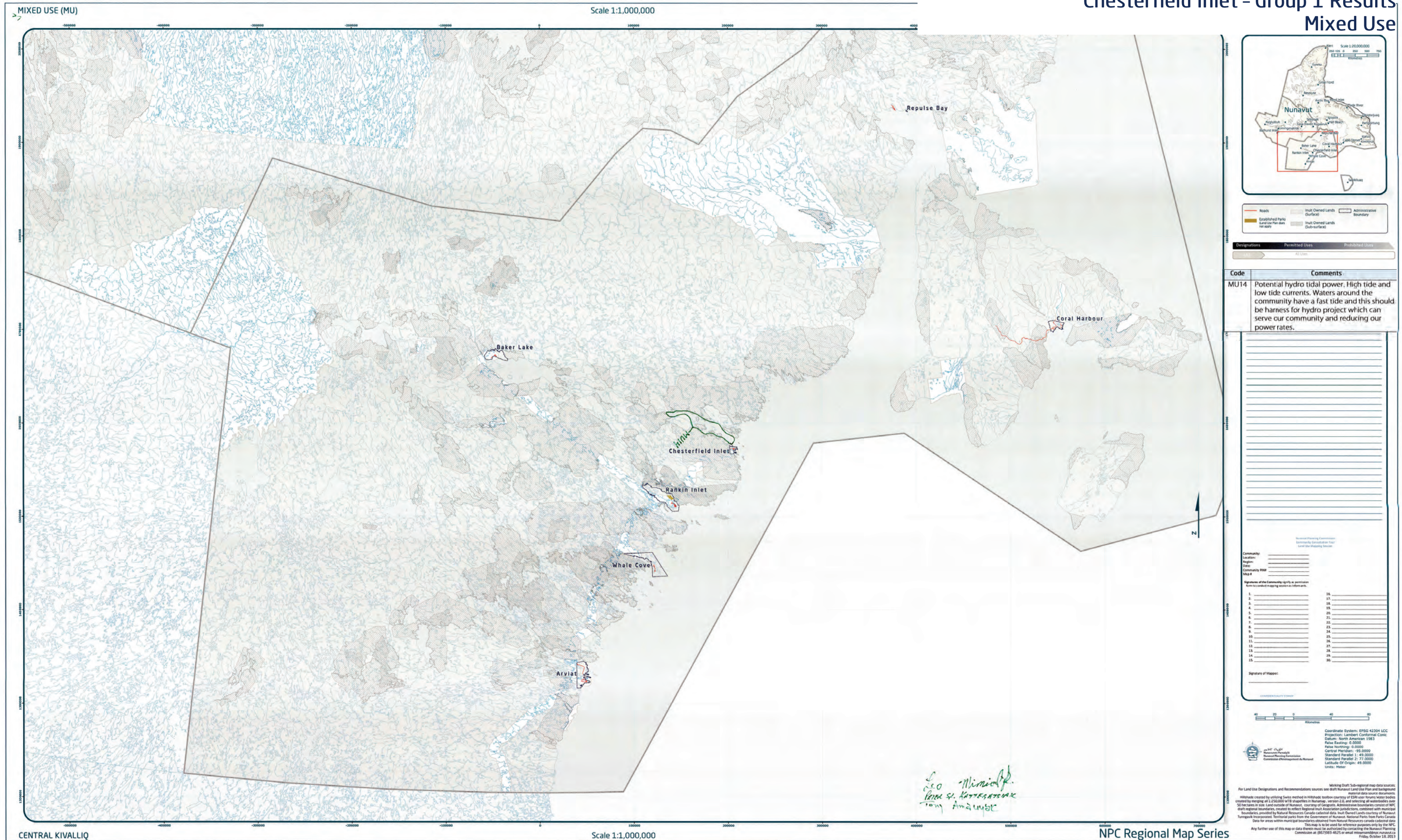


Coordinate System: EPSG:4326 LCC  
Projection: Lambert Conformal Conic  
Datum: North American 1983  
False Easting: 0.0000  
False Northing: 0.0000  
Central Meridian: -95.0000  
Standard Parallel 1: 49.0000  
Standard Parallel 2: 77.0000  
Latitude Of Origin: 49.0000  
Units: Meter

For Land Use Designations and Recommendations sources see draft Nunavut Land Use Plan and background information documents.  
Habitat created by utilizing Swiss method in Habitatat toolbox (courtesy of ESDU user Nuvut) and background information documents.  
Created by merging all 1:250,000 NTS shapefiles in Nunavut, version 2.0, and selecting all waterbodies over 50 hectares in size. Land parcels of Nunavut, courtesy of Geomatics. Administrative boundaries consist of NTC draft regional boundaries, created to reflect Regional Inuit Association jurisdictions, combined with municipal boundaries, provided by Natural Resources Canada and data from Nunavut Land Use Plan (NULUP) from Nunavut Government. Territorial parks from the Government of Nunavut, National Parks from Parks Canada.  
Data for areas within municipal boundaries obtained from Natural Resources Canada cadastral data.  
This map is to be used for reference purposes only by the NPC.  
Any further use of this map or data therein must be authorized by contacting the Nunavut Planning Commission at (867) 769-4623 or email: nupc@nunavut.ca  
Friday October 18, 2013



## Chesterfield Inlet - Group 1 Results









## Appendix 5: Follow-up Meeting

The NPC returned to the community and reviewed a draft version of this report with the Hamlet Council and the Hunters and Trappers Organization. The meeting included:

- A presentation of a draft version of this report
- An overview of the mapped information that was recorded for each topic:
  - Protecting and Sustaining the Environment
  - Encouraging Conservation Planning
  - Building Healthier Communities
  - Encouraging Sustainable Economic Development
  - Mixed Use
- General discussion and comments including:
  - Opportunities to provide additional comments.
  - Concerns were raised about the level of noise that is created and the disturbance on caribou. Helicopters are viewed as a problem not just coming and going from Chesterfield but also from Rankin Inlet.
    - The NPC advised that staff have been in discussions with GN about these concerns and the DFO and Discovery Air have also been contacted to try and find solutions.
  - Concerns were raised about the Hamlet Boundary.
    - The NPC advised that the GN needs to be contacted on this matter and that the Commission could raise that concern. Also advised that the NPC can put in place restrictions that would manage land use around the Hamlet Boundary.