

Summary of Community Meetings on the
Draft Nunavut Land Use Plan
IQALUIT
November 28-29, 2012



Nunavut Planning
Commission



Revised - September 2013

Contents

Introduction	3	Appendix 1: Elected Officials Meeting	16
1.1 Context	3	Appendix 2: Questions and Answers.....	17
1.2 Purpose.....	3	Appendix 3: Wrap Up Session	18
1.3 Methodology.....	3	Appendix 4: Follow-up Meeting	24
1.4 Public Awareness	3		
1.5 Community Population and Participation.....	3		
 Protecting and Sustaining the Environment	4		
2.1 Areas presented to participants.....	4		
2.2 Areas identified by participants.....	4		
2.3 Areas of importance to Protecting and Sustaining the Environment..	4		
 Encouraging Conservation Planning	6		
3.1 Areas presented to participants	6		
3.2 Areas identified by participants.....	6		
3.3 Areas of importance to Encouraging Conservation Planning	6		
 Building Healthier Communities	8		
4.1 Areas presented to participants.....	8		
4.2 Areas identified by participants.....	8		
4.3 Areas of importance to Building Healthier Communities	8		
 Encouraging Sustainable Economic Development	10		
5.1 Areas presented to participants.....	10		
5.2 Areas identified by participants.....	10		
5.3 Areas of importance to Encouraging Sustainable Economic Development	10		
 Mixed Use.....	12		
6.1 Areas identified in the Draft Plan	12		
6.2 Areas identified by participants.....	12		
 Overlapping Goals.....	14		
7.1 Areas identified for multiple goals	14		

1.1 Context

The Nunavut Planning Commission (NPC) is preparing a land use plan to guide and direct resource use and development in the Nunavut Settlement Area (NSA). As part of its efforts, the NPC is facilitating discussions in each Nunavut community on land use and resource management issues. Information that is obtained from these discussions will be used to inform decisions regarding the further development of the Nunavut Land Use Plan (NLUP).

1.2 Purpose

This report presents information obtained during the NPC's visit to the community of Iqaluit. The purpose of the report is to inform decisions regarding the further development of the NLUP, ensuring that the plan reflects the priorities and values of residents.

It is important to note that the information contained in the Community Report will be considered in conjunction with all other feedback when revising the DNLUP.

1.3 Methodology

Information was presented to and received from participants in Iqaluit in accordance with the Nunavut Planning Commission's Community Engagement Strategy (Engagement Strategy). The Engagement Strategy provides for the following methods for presenting and receiving information;

- **Open house;** information contained in the Draft Nunavut Land Use Plan (DNLUP) was presented on 7 multi lingual large format poster boards. Participants were encouraged to review the posters, ask questions and provide feedback.
- **Elected Officials Meeting;** The NPC Chairperson and NPC staff met with senior and elected officials in the community. The development process for the DNLUP, its content and next steps were presented. Comments and questions were recorded during the session and are contained in Appendix 1.

- **Public Workshop;** A formal presentation of the Draft Plan content was provided to participants, including a slide overview of its content. Following the presentation, questions and comments were received from participants. The questions, comments and responses are contained in Appendix 2.
- **Wrap Up Session;** The mapping portion of the Public Workshop was delayed until the Wrap Up Session. The mapping involved discussions regarding the topics presented in the DNLUP and encouraged participants to identify additional areas and issues important for inclusion in a NLUP. Information received during this session was recorded by NPC staff and is included in Appendix 3.

A follow-up meeting was held on April 10, 2013 to review a draft version of this report with the Hamlet Council, Hunters and Trappers Organization, and Community Lands and Resource Committee. A summary of this meeting is included in Appendix 4.

1.4 Public Awareness

The NPC raised public awareness regarding its visit to Iqaluit in accordance with the Engagement Strategy.

The DNLUP and supporting materials were mailed to the Mayor and Council of Iqaluit, the Hunters and Trappers Organizations (HTO) in September 2012. In addition, letters of invitation were sent to the Iqaluit Mayor and Council and HTO in advance of the NPC's visit to advise of the meetings and to encourage participation. Follow up phone calls were also made.

Public notice of the various events was provided in the following ways:

- **Nunatsiaq News and Nunavut News/North;** notice of community meetings were posted in both newspapers a minimum of 45 days in advance.
- **Co-op cable TV;** notice of community meetings was run a minimum of 45 days in advance for one week

and run again for no less than 14 days before the meetings.

- **Community radio;** notices were read by the hosts and a live interview with the Commission Chairperson was conducted.
- **Community bulletin boards;** notices were posted on bulletin boards around the community 45 days and again 14 days in advance of the meetings.
- **Community mail drop;** one page flyers that announced the meetings and their purpose were delivered to the post office in each community for all mail boxes that accept unaddressed ad-mail.
- **nunavut.ca;** the schedule of community visits, the Draft Plan, and all supporting information was available on the Commission's website.

1.5 Community Population and Participation

Iqaluit is a community of approximately 6,700 people (Statistics Canada. 2011 Census). It is located on the southern coast of Baffin Island (see Figure 1).

The Commission visited the community on November 28-29, 2012. All events occurred as scheduled. The sessions were attended as follows;

- **Elected Officials Meeting;** the Mayor and members of the Hamlet Council and HTO attended the elected officials meeting.
- **Open house;** approximately 20 people attended the open house to review the Draft Plan.
- **Public Workshop;** approximately 25 people attended the presentation of the DNLUP and facilitated mapping sessions.
- **Wrap Up Session;** approximately 5 people attended the wrap up session.

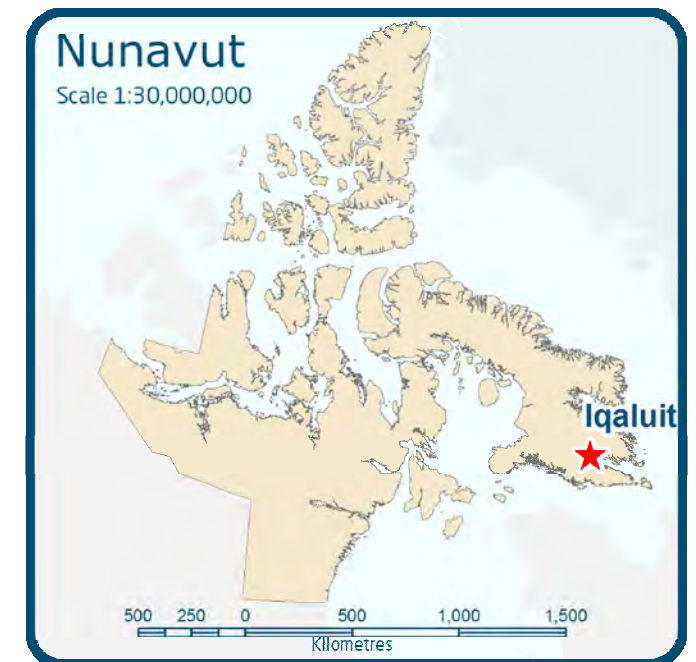


Figure 1. Location of Iqaluit

Chapter 2: Protecting and Sustaining the Environment

Protecting and Sustaining the Environment was one of five topics presented to and discussed by participants during the Open House, Elected Officials Meeting, Public Workshop and Wrap up Session, collectively referred to in this document as information sharing and gathering sessions.

2.1 Areas presented to participants

During the information sharing and gathering sessions, participants were presented the following areas and issues as important to Protecting and Sustaining the Environment.

- Key bird habitat sites
- Caribou Habitat sites
- Atlantic Cod Lakes
- Cumulative Impacts
- Transboundary considerations
- Climate change

The importance of these issues and areas to Protecting and Sustaining the Environment was not disputed by participants during the information sharing and gathering sessions.

2.2 Areas identified by participants

Additional areas and issues were identified by participants as important to Protecting and Sustaining the Environment during the information sharing and gathering sessions. These additional areas are;

- Fishing areas
- Walrus haul outs
- Caribou habitat
- Bird nesting
- Hunting areas

2.3 Areas of importance to Protecting and Sustaining the Environment

Areas and issues discussed during the information sharing and gathering sessions as important to Protecting and Sustaining the Environment are illustrated on Map 1, including areas identified in the DNLUP and areas identified by the community. Scanned images of the maps on which community feedback was recorded can be found in Appendix 3.

Based on discussions with participants, the NPC understands that:

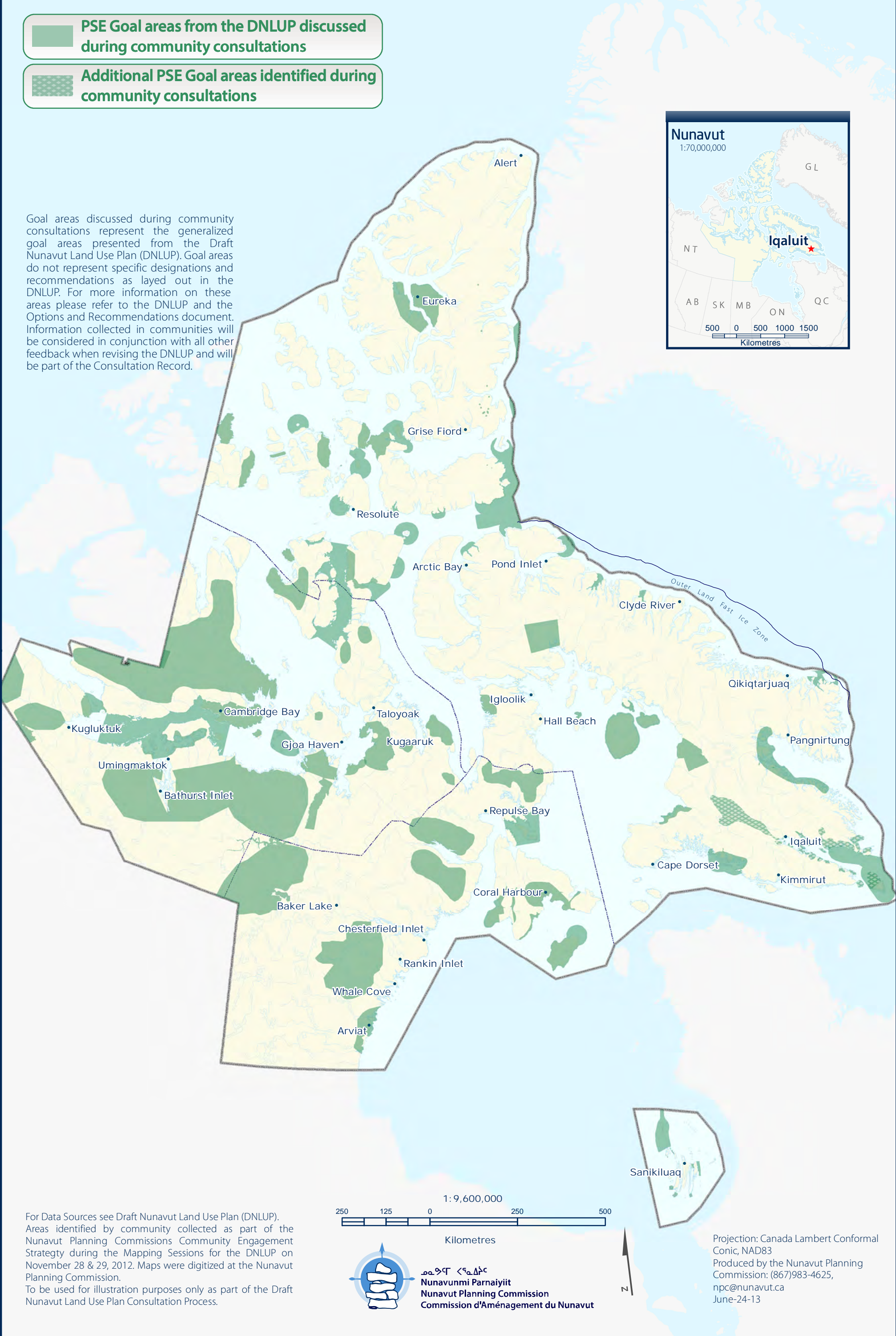
- The areas identified on Map 1 are considered by the Community to be important to Protecting and Sustaining the Environment.
- In these areas, the community would like the NLUP to encourage activities that support environmental protection and management needs, including wildlife conservation, protection and management.

This feedback will be considered in conjunction with all other feedback when revising the DNLUP.



-  **PSE Goal areas from the DNLUP discussed during community consultations**
-  **Additional PSE Goal areas identified during community consultations**

Goal areas discussed during community consultations represent the generalized goal areas presented from the Draft Nunavut Land Use Plan (DNLUP). Goal areas do not represent specific designations and recommendations as layed out in the DNLUP. For more information on these areas please refer to the DNLUP and the Options and Recommendations document. Information collected in communities will be considered in conjunction with all other feedback when revising the DNLUP and will be part of the Consultation Record.



Chapter 3: Encouraging Conservation Planning

Encouraging Conservation Planning was one of five topics presented to and discussed by the participants during the information sharing and gathering sessions.

3.1 Areas presented to participants

During the information sharing and gathering sessions, participants were presented the following areas and issues as important to Encouraging Conservation Planning;

- National Parks Awaiting Full Establishment
- Proposed National Parks
- National Marine Conservation Areas
- Thelon Wildlife Sanctuary
- Migratory Bird Sanctuaries
- National Wildlife Areas
- National Historic Sites
- Territorial Historic Sites
- Heritage Rivers

The importance of these issues and areas to Encouraging Conservation Planning was not disputed by participants during the information sharing and gathering sessions.

3.2 Areas identified by participants

Additional areas and issues were identified by participants as important to Encouraging Conservation Planning during the information sharing and gathering sessions. These additional areas are.

- Caribou calving grounds
- Fishing areas

3.3 Areas of importance to Encouraging Conservation Planning

Areas and issues discussed during the information sharing and gathering sessions as important to Encouraging Conservation Planning are illustrated on Map 2, including areas identified in the DNLUP and areas identified by the community. Scanned images of the maps on which community feedback was recorded can be found in Appendix 3.

Based on discussions with participants, the NPC understands that:

- The areas identified on Map 2 are considered by the Community to be important to Encouraging Conservation Planning.
- In these areas, the community would like the NLUP to encourage activities that support environmental protection and management needs, including wildlife conservation, protection and management.

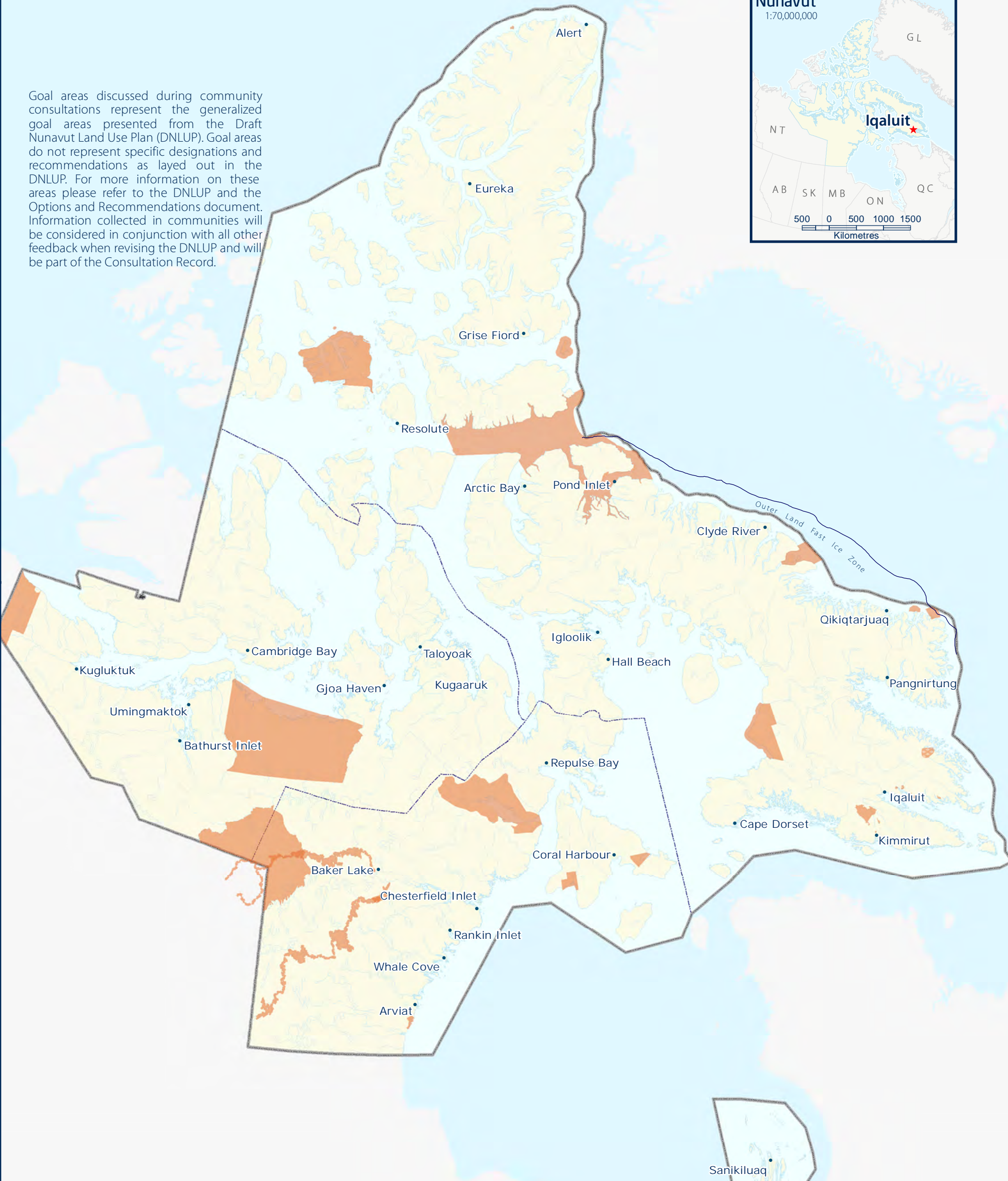
This feedback will be considered in conjunction with all other feedback when revising the DNLUP.



 ECP Goal areas from the DNLUP discussed during community consultations

 Additional ECP Goal areas identified during community consultations

Goal areas discussed during community consultations represent the generalized goal areas presented from the Draft Nunavut Land Use Plan (DNLUP). Goal areas do not represent specific designations and recommendations as layed out in the DNLUP. For more information on these areas please refer to the DNLUP and the Options and Recommendations document. Information collected in communities will be considered in conjunction with all other feedback when revising the DNLUP and will be part of the Consultation Record.



For Data Sources see Draft Nunavut Land Use Plan (DNLUP). Areas identified by community collected as part of the Nunavut Planning Commissions Community Engagement Strategy during the Mapping Sessions for the DNLUP on November 28 & 29, 2012. Maps were digitized at the Nunavut Planning Commission. To be used for illustration purposes only as part of the Draft Nunavut Land Use Plan Consultation Process.



Nunavunmi Parnaiyit
Nunavut Planning Commission
Commission d'Aménagement du Nunavut



Projection: Canada Lambert Conformal
Conic, NAD83
Produced by the Nunavut Planning
Commission: (867)983-4625,
npc@nunavut.ca
June-24-13

Building Healthier Communities was one of five topics presented to and discussed by the participants during the information sharing and gathering sessions.

4.1 Areas presented to participants

During the information sharing and gathering sessions, participants were presented the following areas and issues as important to Building Healthier Communities;

- Areas of Community Interest
- Community Land Use
- Transportation Infrastructure
- Unincorporated Communities
- Alternative Energy Sources
- Community drinking water supplies
- Land remediation
- Northern Contaminated Sites Program
- Aerodromes
- Canadian Forces Station
- Northern Warning System sites

The importance of these issues and areas to Building Healthier Communities was not disputed by participants.

4.2 Areas identified by participants

No additional areas and issues were identified by participants as important to contributing to the goal of Building Healthier Communities during the information sharing and gathering sessions.

4.3 Areas of importance to Building Healthier Communities

Areas and issues discussed during the information sharing and gathering sessions as important to Building Healthier Communities are illustrated on Map 3.

Based on discussions with participants, the NPC understands that:

- The areas identified on Map 3 are considered by the Community to be important to Building Healthier Communities.
- In these areas, the community would like the NLUP to encourage activities that support community needs and cultural priorities.

This feedback will be considered in conjunction with all other feedback when revising the DNLUP.





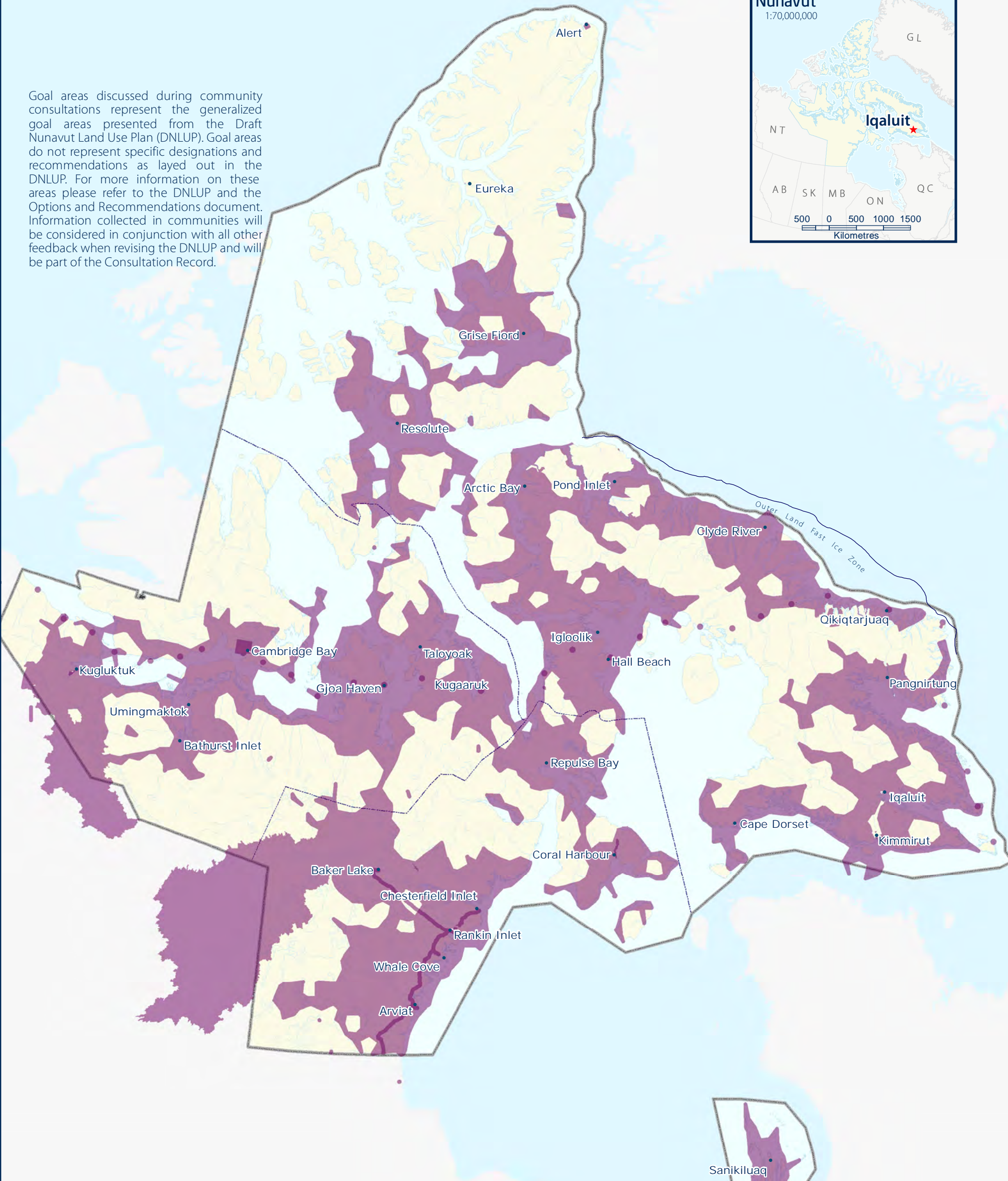
BHC Goal areas from the DNLUP discussed during community consultations



Additional BHC Goal areas identified during community consultations

Goal areas discussed during community consultations represent the generalized goal areas presented from the Draft Nunavut Land Use Plan (DNLUP). Goal areas do not represent specific designations and recommendations as layed out in the DNLUP. For more information on these areas please refer to the DNLUP and the Options and Recommendations document. Information collected in communities will be considered in conjunction with all other feedback when revising the DNLUP and will be part of the Consultation Record.

Nunavut
1:70,000,000



For Data Sources see Draft Nunavut Land Use Plan (DNLUP). Areas identified by community collected as part of the Nunavut Planning Commissions Community Engagement Strategy during the Mapping Sessions for the DNLUP on November 28 & 29, 2012. Maps were digitized at the Nunavut Planning Commission. To be used for illustration purposes only as part of the Draft Nunavut Land Use Plan Consultation Process.



Projection: Canada Lambert Conformal Conic, NAD83
Produced by the Nunavut Planning Commission: (867)983-4625, npc@nunavut.ca
June-24-13

Chapter 5: Encouraging Sustainable Economic Development

Encouraging Sustainable Economic Development was one of five topics presented to and discussed by the participants during the information sharing and gathering sessions.

5.1 Areas presented to participants

During the information sharing and gathering sessions, participants were presented with the following areas important to Encouraging Sustainable Economic Development;

- Mineral Exploration and Production
- Oil and Gas Exploration
- Commercial Fisheries

The importance of these issues and areas to Encouraging Sustainable Economic Development was not disputed by participants during the information sharing and gathering sessions.

5.2 Areas identified by participants

Additional areas and issues were identified by participants as important to Encouraging Sustainable Economic Development during the information sharing and gathering sessions. The additional areas identified are;

- Soapstone quarry
- Commercial fishery potential

5.3 Areas of importance to Encouraging Sustainable Economic Development

Areas and issues discussed during the information sharing and gathering sessions as important to Encouraging Sustainable Economic Development are illustrated on Map 4, including areas identified in the DNLUP and areas identified by the community. Scanned images of the maps on which

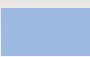
community feedback was recorded can be found in Appendix 3.


Based on discussions with participants, the NPC understands that:

- The areas identified on Map 4 are considered by the Community to be important to Encouraging Sustainable Economic Development.
- In these areas, the community would like the NLUP to encourage activities that support economic opportunities and needs.

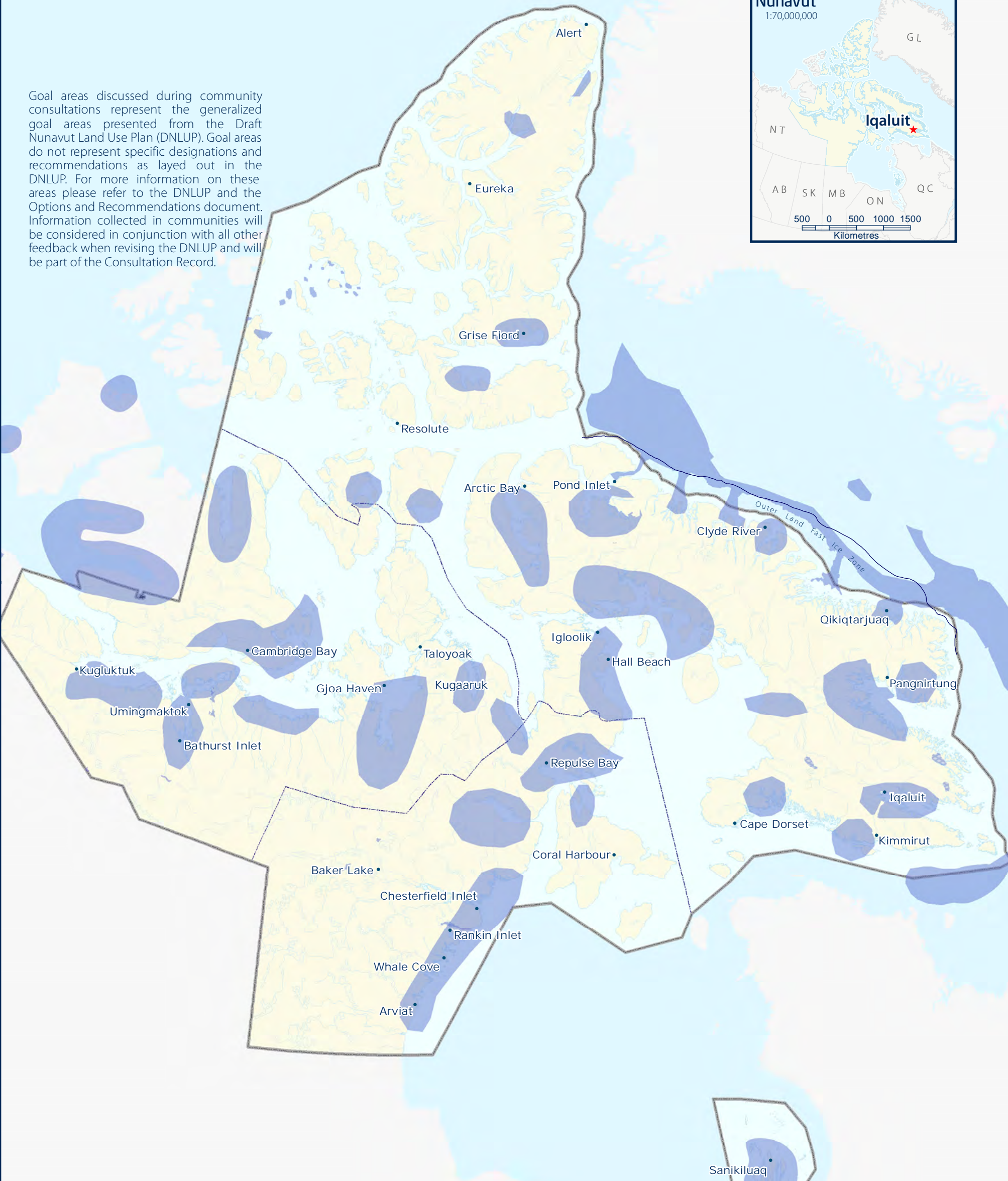
This feedback will be considered in conjunction with all other feedback when revising the DNLUP.



 ESED Goal areas from the DNLUP discussed during community consultations

 Additional ESED Goal areas identified during community consultations

Goal areas discussed during community consultations represent the generalized goal areas presented from the Draft Nunavut Land Use Plan (DNLUP). Goal areas do not represent specific designations and recommendations as layed out in the DNLUP. For more information on these areas please refer to the DNLUP and the Options and Recommendations document. Information collected in communities will be considered in conjunction with all other feedback when revising the DNLUP and will be part of the Consultation Record.



For Data Sources see Draft Nunavut Land Use Plan (DNLUP). Areas identified by community collected as part of the Nunavut Planning Commissions Community Engagement Strategy during the Mapping Sessions for the DNLUP on November 28 & 29, 2012. Maps were digitized at the Nunavut Planning Commission. To be used for illustration purposes only as part of the Draft Nunavut Land Use Plan Consultation Process.

1,750 875 0 1,750 3,500

Kilometres



ᓄᓇᓂᓄᓐ ᐸᓇᓂᓄᓐ

Nunavunmi Parnaiyiit

Nunavut Planning Commission

Commission d'Aménagement du Nunavut

Projection: Canada Lambert Conformal Conic, NAD83
Produced by the Nunavut Planning Commission: (867)983-4625, npc@nunavut.ca
June-24-13

6.1 Areas identified in the Draft Plan

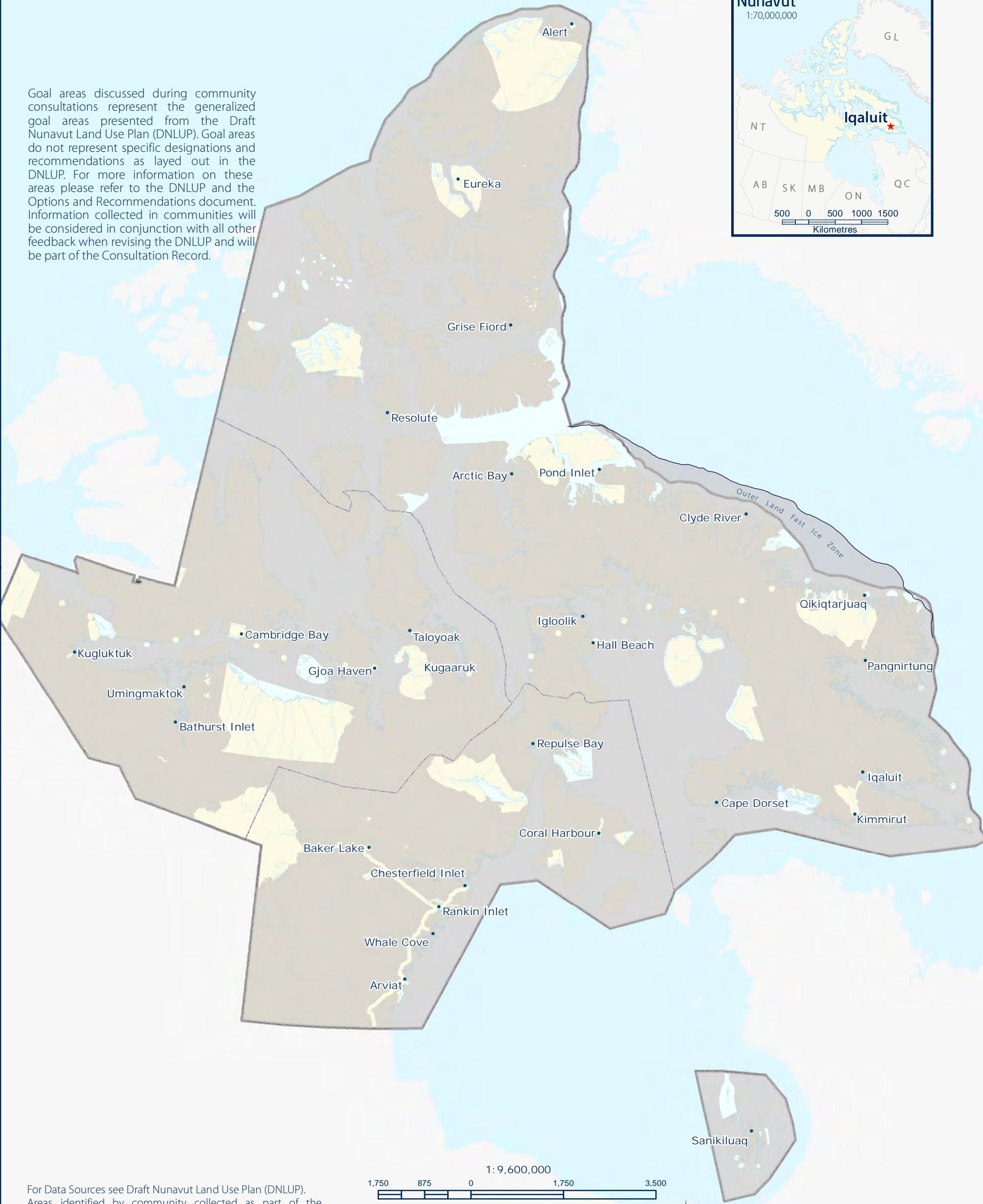
The DNLUP identifies areas important for a variety of uses. These areas were presented to participants during the workshop as Mixed Use Areas. These areas, as they occur around the community, are illustrated on Map 5.

6.2 Areas identified by participants

No additional areas were identified as Mixed Use by participants.

MU Goal areas from DNLUP discussed during community consultations

Goal areas discussed during community consultations represent the generalized goal areas presented from the Draft Nunavut Land Use Plan (DNLUP). Goal areas do not represent specific designations and recommendations as layed out in the DNLUP. For more information on these areas please refer to the DNLUP and the Options and Recommendations document. Information collected in communities will be considered in conjunction with all other feedback when revising the DNLUP and will be part of the Consultation Record.



For Data Sources see Draft Nunavut Land Use Plan (DNLUP). Areas identified by community collected as part of the Nunavut Planning Commissions Community Engagement Strategy during the Mapping Sessions for the DNLUP on November 28 & 29, 2012. Maps were digitized at the Nunavut Planning Commission. To be used for illustration purposes only as part of the Draft Nunavut Land Use Plan Consultation Process.



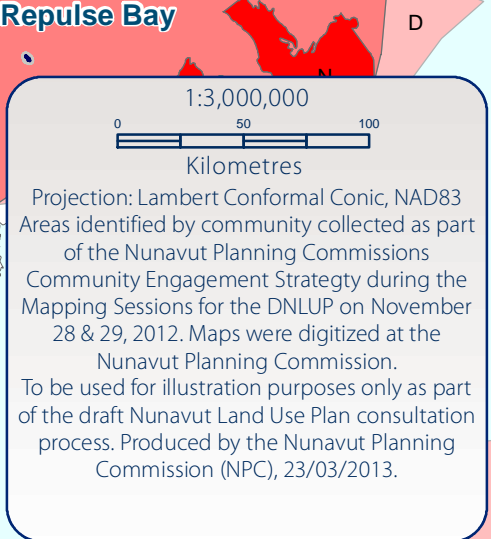
ᑎᓄᓐᓂᓐ ᐸᓄᓐᓂᓐ
Nunavunmi Parnaiyiit
Nunavut Planning Commission
Commission d'Aménagement du Nunavut



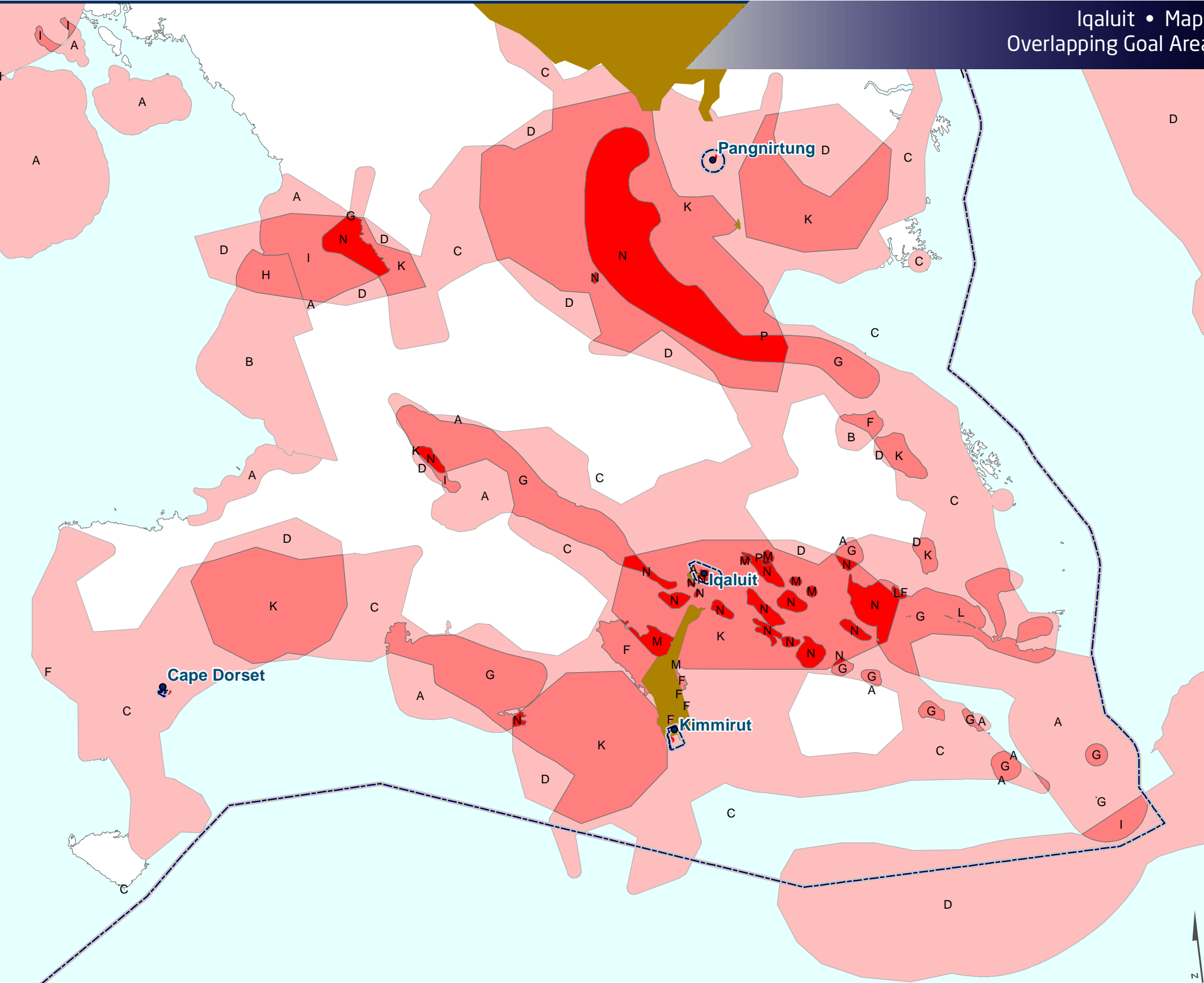
Projection: Canada Lambert Conformal Conic, NAD83
Produced by the Nunavut Planning Commission: (867)983-4625, npc@nunavut.ca
June-24-13

7.1 Areas identified for multiple goals

All areas discussed with the community as important for a particular goal are shown on Map 6. In some instances, areas have been identified as important for multiple goals. These areas, and the specific goals they are important to, are also shown on Map 6. In these areas, the NPC will take all of the identified goals and all other feedback into consideration when revising the DNLUP.



Label	Goals in Area
A	PSE
B	ECP
C	BHC
D	ESED
E	PSE, ECP
F	BHC, ECP
G	BHC, PSE
H	ESED, ECP
I	ESED, PSE
K	BHC, ESED
L	BHC, PSE, ECP
M	BHC, ESED, ECP
N	BHC, ESED, PSE
O	ESED, PSE, ECP
P	All Goals (BHC, ESED, PSE, ECP)



Appendix 1: Elected Officials Meeting

The elected officials meeting was attended by the Mayor and members of the Hamlet Council and HTO. During the meeting, participants raised the following issues:

- Advised the Commission of a future municipal water supply
- Advised the Commission of a change to the 4km aerodrome regulations implemented by Transport Canada
- Advised the Commission of potential future long range growth areas.
- Discussion about the identification of a buffer around the City boundary and the need to enlarge the municipal boundary
- Concerns about ballast water exchange
- Shipping routes
- Roads to mineral exploration sites



Appendix 2: Questions and Answers

During the community workshop, there was a question and answer period, which included a discussion of the following topics:

- Since Nunavut is like a gated community, could you control import of goods? For example, require that materials be able to be recycled and composted?
 - The Commission answered that this is not a function of the land use plan, and that the purpose of the plan is to guide and direct resource use and development.
- High speed cable cars are an option to move between Iqaluit and Kimmirut. There is value in alternate energy sources (including hydro). Also, gas is a better alternative energy source to diesel.
 - The Commission answered that the land use plan depicts how land should be used, and municipal governments are responsible for their own uses.



Appendix 3: Wrap Up Session

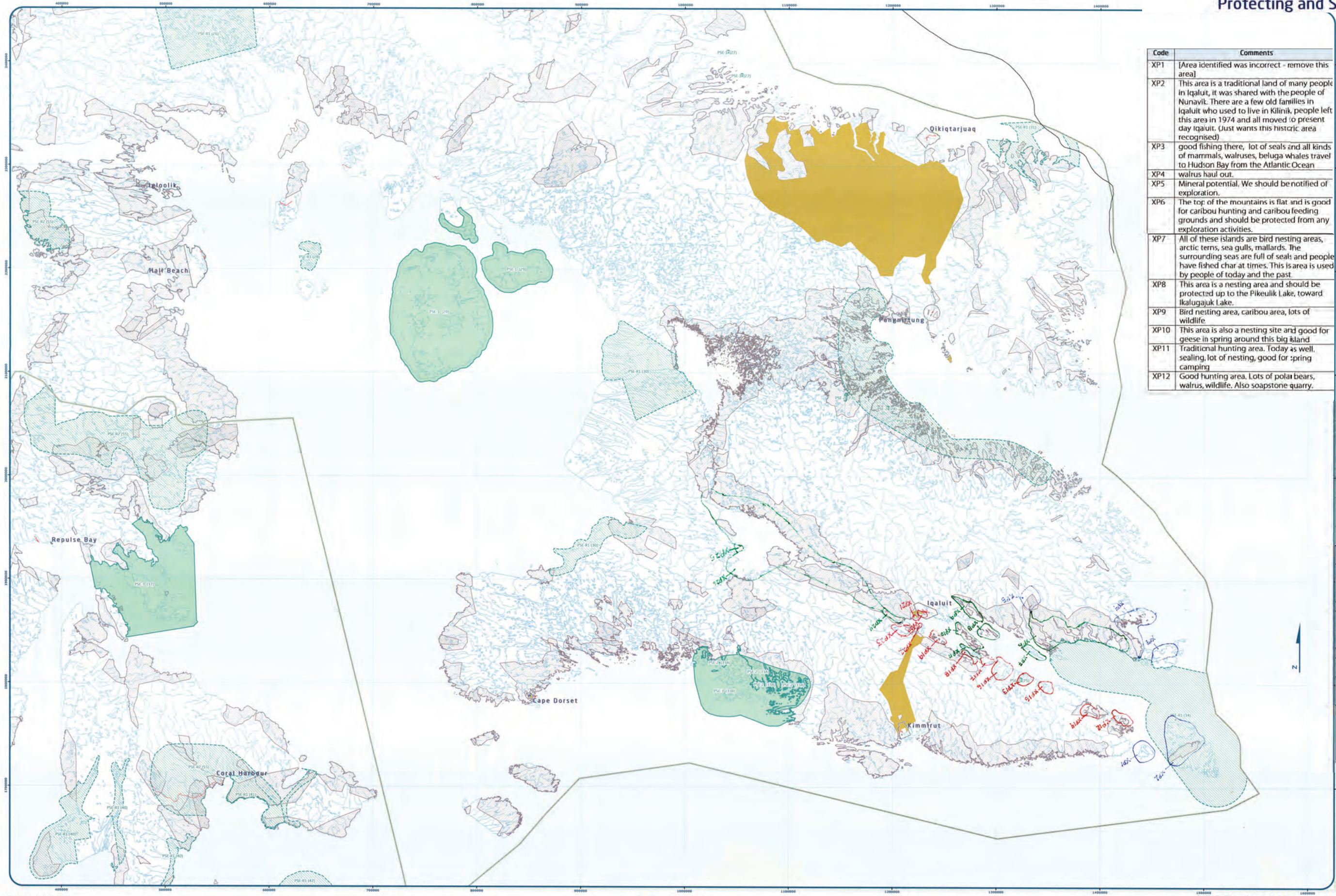
One group completed the mapping session to identify important areas. This Appendix contains the maps that were used by participants to identify areas that are important to the following land use planning goals:

- Protecting and Sustaining the Environment
- Encouraging Conservation Planning
- Building Healthier Communities
- Encouraging Sustainable Economic Development
- Mixed Use

Also included on each map is a reference table that includes the specific values that were identified for the area.

During the mapping portion of the community workshop, the following concerns were raised that did not apply to a specific area that was identified on the maps:

- Areas identified on the PSE map are important
- Community land use data on BHC map looks complete (no additional comments)
- Feasibility studies needed to confirm what lakes are viable for commercial fishery, what parts of Frobisher Bay are good for commercial fishery.



Code	Comments
XP1	[Area identified was incorrect - remove this area]
XP2	This area is a traditional land of many people in Iqaluit, it was shared with the people of Nunavik. There are a few old families in Iqaluit who used to live in Kilinik, people left this area in 1974 and all moved to present day Iqaluit. (Just wants this historic area recognised)
XP3	good fishing there, lot of seals and all kinds of mammals, walrus, beluga whales travel to Hudson Bay from the Atlantic Ocean
XP4	walrus haul out.
XP5	Mineral potential. We should be notified of exploration.
XP6	The top of the mountains is flat and is good for caribou hunting and caribou feeding grounds and should be protected from any exploration activities.
XP7	All of these islands are bird nesting areas, arctic terns, sea gulls, mallards. The surrounding seas are full of seals and people have fished char at times. This is area is used by people of today and the past.
XP8	This area is a nesting area and should be protected up to the Pikeulik Lake, toward Ikalugajak Lake.
XP9	Bird nesting area, caribou area, lots of wildlife
XP10	This area is also a nesting site and good for geese in spring around this big island
XP11	Traditional hunting area. Today as well, sealing, lot of nesting, good for spring camping
XP12	Good hunting area. Lots of polar bears, walrus, wildlife. Also soapstone quarry.



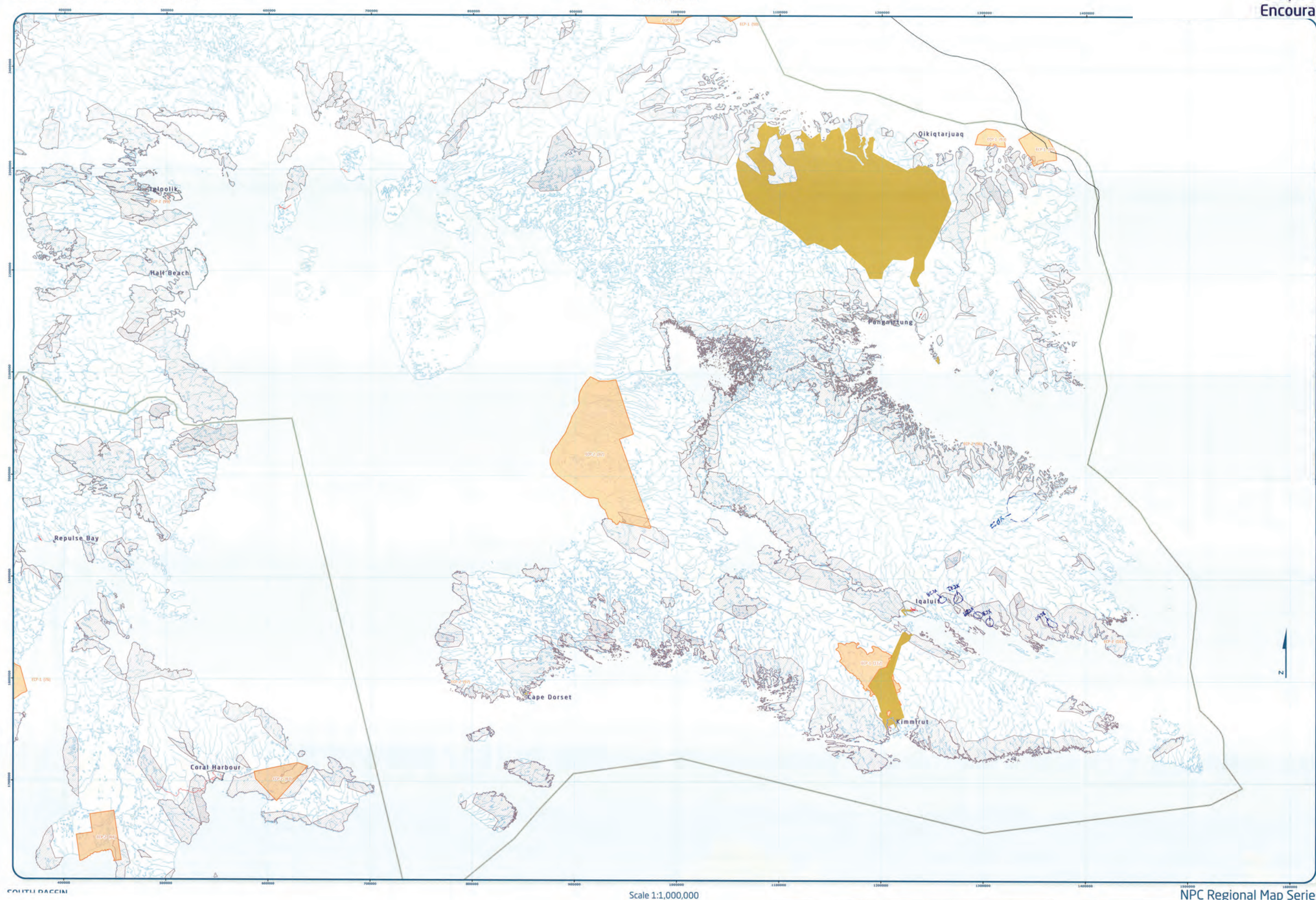
Designations	Permitted Uses	Prohibited Uses
Residential, Recreation, Research	Residential, Recreation, Research	All Other Uses
Residential, Recreation, Research	Residential, Recreation, Research	All Other Uses
Residential, Recreation, Research	Residential, Recreation, Research	All Other Uses

Reference Table for Recommendations
Project Provisions located in a Key Area should take into account impacts on the integrity of the area.
Project Provisions located in a Key Area should take into account impacts on caribou calving, deer calving areas and migration routes.
Project Provisions located in a Key Area should take into account impacts on the ability of caribou to cross the ice.
Project Provisions located in a Key Area should take into account impacts on the ability of caribou to cross the ice.
Project Provisions located in a Key Area should take into account impacts on the ability of caribou to cross the ice.

- XP13 The area has lots of cod in the sea and some are land locked.
- XP14 Fishing area
- XP15 you can clam dig in this area and for picking Lots of them here, needs to be marked and identified to be protected for food source. Include Tasiliak Lake.
- XP16 These coves are good for clam digging and the land around it is good go caribou hunting.
- XP17 this area around the island have lot of beluga whales and the shores are good for clam digging.
- XP18 this is good for clam digging around this island, fish, beluga whales.
- XP19 Good for clam digging, bird eggs, beluga hunting
- XP20 clamming grounds on the low tide mark, seals and fish. Near the territorial park, and should not be marked inside the boundaries (goes into the ocean).
- XP21 clamming grounds, fish area, lots of wildlife
- XP22 clamming grounds, beluga whale routes, hunting of sea mammals, the land also has lots of birds nesting and resting for the summer.
- XP23 fishing camp for the community
- XP24 char fishing, the sea around it will support life, lot of seals of all kinds.
- XP25 all this area towards inland has to be protected for caribou habitation, lot of local people hunt here for food.
- XP26 caribou habitat. These islands should be protected for camping and for fishing, the areas around are caribou calving area. This calving area needs full protection and activities should be kept to a minimum if allowed at all.

Coordinate System: EPSG 42304 LCC
Projection: Lambert Conformal Conic
Datum: North American 1983
False Easting: 0.0000
False Northing: 0.0000
Central Meridian: -95.0000
Standard Parallel 1: 49.0000
Standard Parallel 2: 77.0000
Latitude Of Origin: 49.0000
Units: Meter

For Land Use Designations and Recommendations sources see Draft Nunavut Land Use Plan and background material data source documents.
Hatchwork created by utilizing Series method in Hatchwork toolset courtesy of GIS user forum. Water bodies created by merging at 1:250,000 WTS shapefiles in Nunavut, version 2.0, and selecting all waterbodies over 500 hectares in size. Land outside of Nunavut, courtesy of Geomatics. Administrative boundaries consist of NPC and regional boundaries, created to reflect Regional Inuit Association jurisdictions, combined with municipal boundaries, provided by Natural Resources Canada cadastre data. Inuit Owned Lands courtesy of Nunavut Territorial Government. Territorial parks from the Government of Nunavut. National Parks from Parks Canada. Data for areas within municipal boundaries obtained from Natural Resources Canada cadastre data. This map is to be used for reference purposes only by the NPC.
Any further use of this map or data therein must be authorized by contacting the Nunavut Planning Commission at (867) 963-4625 or email info@nplanning.com
November 16-17

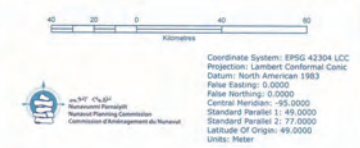


Designations	Permitted Uses	Prohibited Uses
11.2.1	Tuition, Recreation, Research	All Other Uses
11.2.2	Tuition, Recreation, Research	

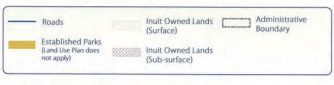
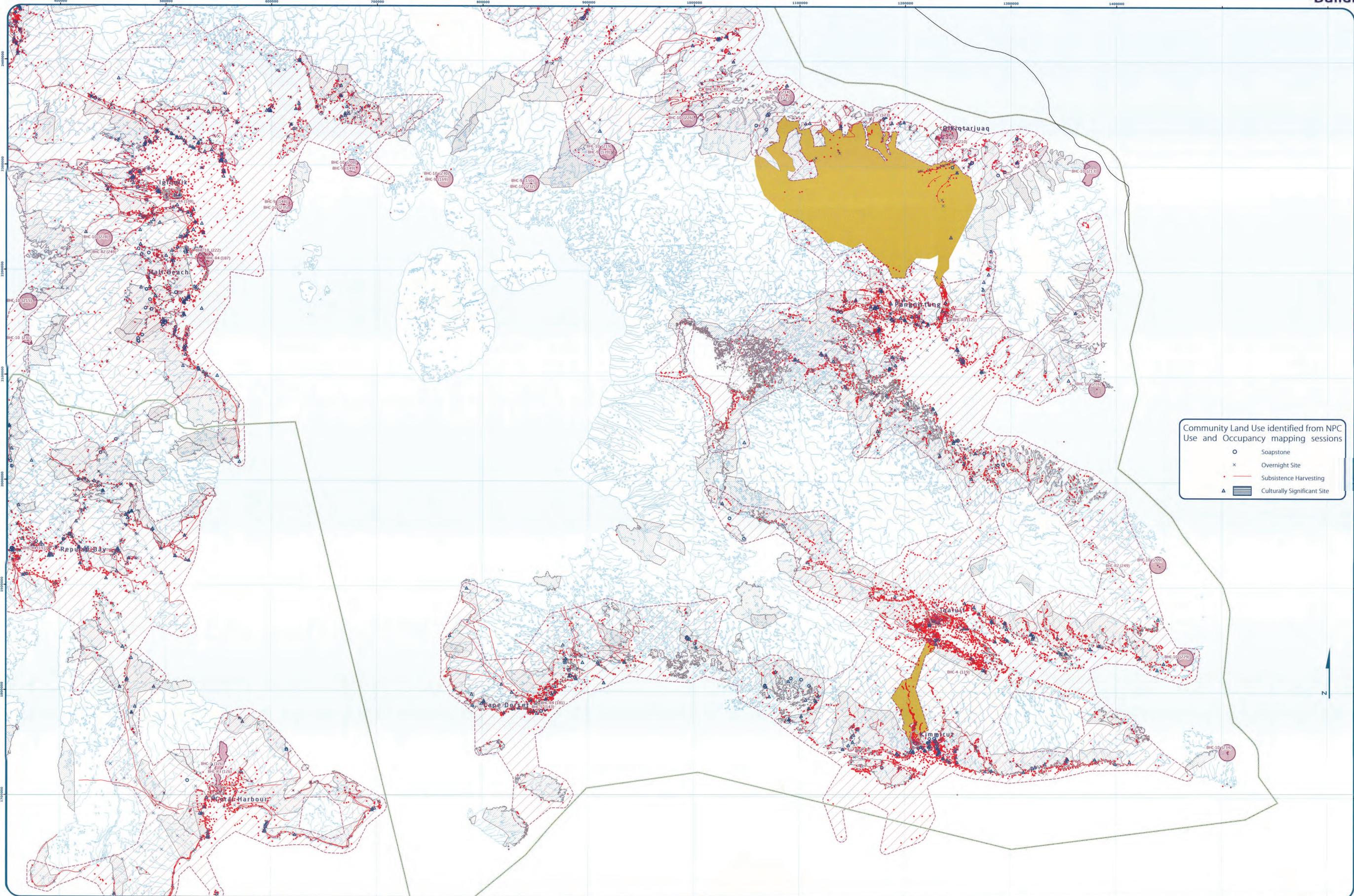
Reference Table for Recommendations

Project Proposals located in and/or near a Heritage Area should take into account the guidelines and policies contained in the Heritage Area's Management Plan.

Code	Comments
XP27	Used to be a caribou calving ground
XC28	fishing area, lakes around here need protection.
XC29	this lake has lot of fish it (called 'kalugajuk Lake). Good many fish year round but most it is used only in fall and early winter, as the terrain is hard to travel in spring and summer.
XC30	A good area to fish by net fishing in early winter.
XC31	This lake is also good for fishing, good source for country food
XC32	land locked char. Not viable for commercial fishing.

[illegible]

Mapping Draft Sub-regional map data sources
 For Land Use Designations and Recommendations sources see draft Nuvuut Land Use Plan and background material data source documents
 Hillshade created by utilizing Swiss method in Hillshade toolboxes in ArcGIS
 Created by merging all 1:250,000 MTWU shapefiles in Nuнавut - version 2.0 and selecting all waterbodies over 50 hectares in size. Land outside of Nuнавut, courtesy of Geographic Administrative boundaries control of Nunavut and the boundaries of the Great Lakes and Hudson Bay, courtesy of the Government of Canada
 Boundaries provided by Natural Resources Canada cadastre data. Must Overlay of Nunavut and Nunavut
 Incorporated. Territorial parks from the Government of Nuнавut. National Parks from Parks Canada
 Data for areas within municipal boundaries obtained from Natural Resources Canada cadastre data
 This is to be used for reference purposes only
 Any further use of this map or data therein must be authorized by contacting the Nunavut Planning Commission at (867)709-4625 or email mtownsend@nvc.nu



Designations	Permitted Uses	Prohibited Uses
BHC-1	Roads, Railways, Utilities and Corridors	
BHC-2	Roads, Railways, Utilities and Corridors	
BHC-3	All uses except those Prohibited	Mining
BHC-4	Hydro electrical and related infrastructure	
BHC-5	Tourism, Recreation and Research, Municipal Services	
BHC-6	Municipal Services	All other Uses
BHC-7	Municipal Services	
BHC-8	Remediation and Reclamation Activities	All other Uses
BHC-9	Remediation and Reclamation Activities, S&D Operations and Activities	All other Uses
BHC-10	S&D Operations and Activities	All other Uses

Legend BHC Recommendation

Reference Table for Recommendations	
BHC-R1	Project Proposals located in the Hukikak River Area of Interest should take into account impacts on the cultural value of the area.
BHC-R2	Project Proposals located in areas of traditional land use should take into account impacts on the cultural value of the area.
BHC-R3	Project Proposals located in a community water supply watershed should take into account impacts on the quality and quantity of community drinking water.
BHC-R4	Project Proposals located in a municipal Aerodrome should take into account impacts on aerodrome safety.

Code	Comments
[No comments]	

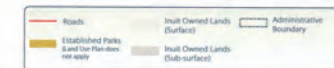
Comments section for the map, including a table for recording comments and a section for the mapper's signature.

Signature section for the map, including a table for recording signatures and a section for the mapper's signature.



Coordinate System: EPSG 42304 LCC
Projection: Lambert Conformal Conic
Datum: North American 1983
False Easting: 0.0000
False Northing: 0.0000
Central Meridian: -95.0000
Standard Parallel 1: 49.0000
Standard Parallel 2: 77.0000
Latitude Of Origin: 49.0000
Units: Meter

For Land Use Designations and Recommendations sources see draft Nunavut Land Use Plan and background material data source documents.
Use and Occupancy data from NPC Use and Occupancy mapping sessions, 2004 to 2011.
Hillshade created by utilizing Swiss method in Hillshade toolset courtesy of ESRI User Source Meter bodies created by merging all 1:250,000 WTB shapefiles in Nunavut, version 2.0, and selecting all waterbodies over 50 hectares in size. Land outside of Nunavut, courtesy of Geoparc. Administrative boundaries consist of NPC draft regional boundaries, created to reflect Regional Inuit Association jurisdictions, combined with municipal boundaries, provided by Natural Resources Canada (data). Inuit Owned Lands courtesy of Nunavut Tungavik Incorporated. Territorial parks from the Government of Nunavut, National Parks from Parks Canada. Data for areas within municipal boundaries obtained from Natural Resources Canada cadastral data.
This map is to be used for reference purposes only by the NPC.
Any further use of this map or data therein must be authorized by contacting the Nunavut Planning Commission at: (867)983-4625 or email: info@nuplanning.com.nu
November 16-12



Designations	Permitted Uses	Prohibited Uses
Executive Director	Mining, Reclamation and Reclamation Activities, Boards, Rulemaking, Enforcement and Compliance	
Assistant Director	Law and Order, Enforcement and Reclamation Activities	
Supervisor		

1910 Reclamation

Reference Table for Recommendations

Project Proponent located in an area of exposure to falling potential should use the closest exposure to the project to determine the extent of the area.

Code	Comments
D33	soapstone quarry for the community. Important non-renewable resource.
D34	perhaps viable for commercial fishery (general area - couldn't locate exact lake)
D35	potential commercial fishery.

[illegible]

**Neutral Planning Commission
Community Consultation Task
Final Site Mapping Review**

Community: Shydel

Location: _____

Region: _____

Date: _____

Community POC: _____

Map # _____

Representatives of the Community signify as permitted
(Not considered binding, unless as otherwise noted.)

1.	_____	16.	_____
2.	_____	17.	_____
3.	_____	18.	_____
4.	_____	19.	_____
5.	_____	20.	_____
6.	_____	21.	_____
7.	_____	22.	_____
8.	_____	23.	_____
9.	_____	24.	_____
10.	_____	25.	_____
11.	_____	26.	_____
12.	_____	27.	_____
13.	_____	28.	_____
14.	_____	29.	_____
15.	_____	30.	_____

Signature of Mayor: _____

to _____

[illegible]

The map shows Nunavut with its major cities and towns marked with dots. A red box highlights the area around Igloolik, Repulse Bay, and Cape Dorset. The map includes a scale bar (0 to 750 Kilometers) and a north arrow. The word 'Nunavut' is written in large letters across the center of the map.



Designations	Permitted Uses	Prohibited Uses
MLJ	All Uses	

de	Comments
	[No comments]

[illegible]

Nunavut Planning Commission
 Community Consultation Tour
 Land Use Mapping Session

Community: _____
 Location: _____
 Region: _____
 Date: _____
 Community PNA# _____

Signatures of the Community signify as permission form to conduct mapping session as informants.

1	16
2	17
3	18
4	19
5	20
6	21
7	22
8	23
9	24
10	25
11	26
12	27
13	28
14	29
15	30

Signature of Mapper:

CONFIDENTIALITY STAMP




 Coordinate System: EPSG 42304 LCC
 Projection: Lambert Conformal Conic
 Datum: North American 1983
 False Easting: 0.0000
 False Northing: 0.0000
 Central Meridian: -95.0000
 Standard Parallel 1: 49.0000
 Standard Parallel 2: 77.0000
 Latitude Of Origin: 49.0000
 Units: Meter

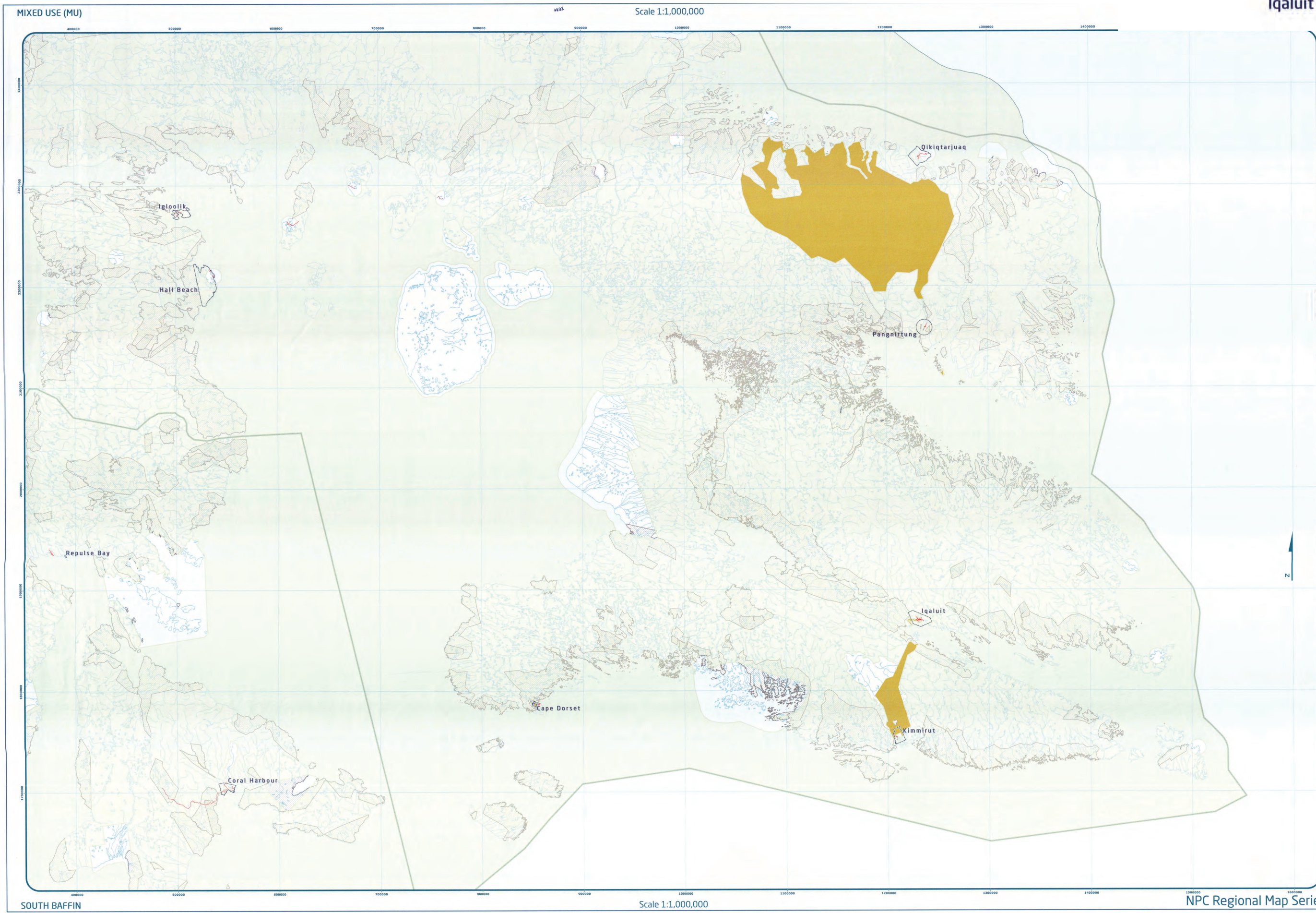
Working Draft Sub-regional map data source

For Land Use Designations and Recommendations sources see draft Nunavut Land Use and Background Information map. Material data source includes:

Hillshade created by utilizing SSI method in Hillshade toolboxes created of ESRI user forums water tool created by merging all 1:250,000 WTS shapefiles in Nunavut, version 2.0, and selecting all waterbodies and hydro features in size. Land outside of Nunavut, country of Georgia. Administrative boundaries consist of Nunavut, Northwest Territories, Yukon, and Nunavut. Administrative boundaries consist of all waterbodies, provided by Natural Resources Canada cadastral data. Inuit Owned Lands courtesy of Nunavut Government. Territorial parks from the Government of Nunavut, National Parks from Parks Canada.

Data for areas within municipal boundaries obtained from Natural Resources Canada. This data is used for reference purposes only by the Nunavut Planning Commission. For any further use of this map data therein must be authorized by contacting the Nunavut Planning Commission at: (867) 993-4625 or email mtownsend@nrcan.gc.ca

November 1, 2011



Appendix 4: Follow-up Meeting

The NPC returned to the community to review a draft version of this report with the Hamlet Council, Hunters and Trappers Organization, and Community Lands and Resource Committee. The meeting included:

- A presentation of a draft version of this report
- An overview of the mapped information that was recorded for each topic:
 - Protecting and Sustaining the Environment
 - Encouraging Conservation Planning
 - Building Healthier Communities
 - Encouraging Sustainable Economic Development
 - Mixed Use
- Potential changes to the classification of a few mapped areas were discussed and agreed to.
- General discussion and comments including:
 - We want our water supplies protected. We want the watershed of the 2nd water supply protected.
 - Discussion of overlapping issues